



*Dillwynia sericea*

# NEWSLETTER

AUSTRALIAN PLANTS SOCIETY, MITCHELL GROUP INC.

aps.mitchell@gmail.com

PO Box 541, Kilmore, Victoria 3764

Inc# A0054306V

## August news...!

Hello and welcome to our August edition! Spring is coming along with busy times and new activities are ahead...

Our regular 3rd Monday of the month evening meetings will be on hold for a few months with the committee currently exploring different activities, ways and times for our members to get together. Over the coming months we have the opportunity to get out and about to meet members of one of our neighbouring APS Groups & see an exceptional guest speaker, enjoy our local orchids, wildflowers and grasses at Monument Hill and Boulton Flora Reserve at Tallarook (details at right).

Our Annual Spring Plant Expo & Sale is now only two and a bit months away and an updated list of what's on & who's there can be found on page 10. As always, assistance will be needed from as many members as possible to make the day a success. There are many ways to contribute both big and small. A key need will be plant specimens from members and friends gardens for the displays on Expo day. Also help



Wattle blooming Photo: Maureen Runge

on set up day (Friday October 14th) and helpers on Expo day (Saturday October 15th).

Our next newsletter is due out on September 12th. Contributions both large and small are always very, very welcome and should be sent in by Monday September 5th. Email contributions to: [wattlegum@southernphone.com.au](mailto:wattlegum@southernphone.com.au) or post to PO Box 381 Pyalong Vic 3521.

May your gardens be blooming & cheers until next month, Jeanine :-)

### Inside this issue:

*August & General Meeting Information* Pg 2

*Memberships* Pg 2

*Grevillea alpina* Pg 2

*July Meeting Report* Pg 3

*August Garden Guide* Pg 7

*Reminders, APS Vic Diary Dates etc...* Pg 9

*Committee & Contact Information* Pg 9

## Wattle Day: September 1st ...

National Wattle Day - Thursday September 1st 2016

National Wattle Day celebrates Australia and all Australians.

*Acacia pycnantha*, Golden Wattle is our national floral emblem and is a symbol that comes directly from our land representing one and all with no exclusions. *Acacia* are a species of great diversity with more than 1,000 species and much like our people and national spirit they have great resilience, being one of the first to bloom after adversity. Wattle heralds the arrival of spring, new beginnings and paints our national colours across the landscape.

Why not join the celebrations on September 1st. Try wearing a sprig of Wattle, greet a neighbour or friend with "Happy Wattle Day!" Decorate the house with wattle - it's up to you, but above all enjoy your day.

## August 2016

Volume 3, Issue 7

### Mitchell Diary Dates..

- **Saturday August 27th 10:30am EXCURSION MEETING: APS MITCHELL WILL BE JOINING APS STRATHBOGIE RANGES GROUP AT EUROA for a Guest Speaker Presentation by Leon Costermans 3rd Age Clubrooms Kirkland Avenue, Euroa**
- **Sunday September 18th Excursion Meeting: Wildflower & Orchid Walk at Monument Hill. Time & further details to be advised.**
- **Saturday Oct 15th 9am-3pm APS MITCHELL ANNUAL SPRING PLANT EXPO & SALE**
- **Sunday October 30th 11am Excursion Meeting: Grasses & Wildflower Walk Boulton Flora Reserve Tallarook. BYO Lunch/Plate to Share. Tea & Coffee Supplied. RSVP to Ian Ph: 0438 270 248**
- **Monday Nov 21st 7:30pm MEETING & AGM Owners & Trainers Bar Kilmore Racing Club East Street, Kilmore Guest Speaker: To Be Advised**



## *Grevillea alpina...*

By Barbara Mau

Belonging to the Proteaceae family *Grevillea alpina*, Mountain Grevillea, or Cats Claws, in the wild is an understorey shrub. Our local form can be seen blooming on Mt Piper now. I have this lovely shrub growing in my garden. *G alpina* was kindly given to me by Brian Weir a few years ago and come May I look forward to appearance of the first flowers.

May is when *G alpina* begins its epic and prolific flowering period, continuing through the summer months and depending on conditions on into May. The long flowering period provides many insects and native birds with nectar. A great asset to the garden as it is so versatile, as a specimen plant, grouping or hedging. It is easily grown, responds well to judicious pruning to promote flowers and a good, dense shape. *G alpina* grows to 1.5m tall, and 1-1.5m wide depending on conditions. It is draught tolerant and survives frosts to -8C. It enjoys sun or part shade in well drained soil. It prefers a drier summer, dislikes humidity, and thrives in nutrient poor soil, so restrict any fertilizer. Unlike many other *Grevilleas* it is not at all prickly, instead has lovely, small, oval grey green leaves...and gorgeous flowers to boot!



*Grevillea alpina* - Cats Claws  
Photo: Barbara Mau

MEETINGS ARE HELD ON THE  
3rd MONDAY OF THE MONTH  
(February to November)  
unless otherwise advised

Commencing 7:30 pm in the  
Owners & Trainers Bar  
Kilmore Racing Club,  
East Street, Kilmore Vic 3764

Entry \$2.00 Gold Coin

Guest Speaker

Door Prizes

Plant Sales

Fertilizer Sales

(APS Mitchell Slow Release  
fertiliser \$5.00 per 500g)

Use of the APS Mitchell free  
Library ( See Barbara)

Supper & Chat

VISITORS VERY WELCOME

Members & Visitors are  
encouraged to bring along  
exhibits for our Flower  
Specimen Table

Please label plants



## *August Meeting Saturday the 27th Euroa...*

By Jeanine Petts

### **Reminder...THERE IS NO MONDAY EVENING MEETING THIS MONTH...**

This month APS Mitchell will be joining APS Strathbogie Group at Euroa on **Saturday August 27th at 10:30 am for a special presentation by Leon Costermans in the 3rd Age Clubrooms, Kirkland Avenue, Euroa.**

The meeting will begin with coffee, morning tea and a chat, followed by a presentation from Leon Costermans at 11 am and will conclude with a BYO lunch. Leon Costermans is a botanist, botanical illustrator, geologist and the author of *Native Trees and Shrubs of South-Eastern Australia*. Leon's presentation will concentrate on the plant communities of Victoria. Leon is currently working on completing a definitive description of Victoria's Geology.

Any members either requiring or able to provide a seat for car pooling travel to Euroa please contact Ian Julian ph: 0438 270 248



*Dichelachne crinita*, Long Haired  
Plume-grass  
Photo: Barbara Mau

## *Memberships...*

For membership/renewal enquiries or forms please contact Bill Barker  
Phone: 5783 3838 (or see Bill at a monthly meeting) ☺

Alternatively visit APS Mitchell's website:

[http://www.apsmitchell.org.au/?page\\_id=18](http://www.apsmitchell.org.au/?page_id=18)



## July Meeting Report... "Landscape Restoration"

By Jeanine Petts

Although the turnout for was small for our July meeting as nine apologies had been received, the dozen members who did find their way to the Golden Rein Room at Trackside were well rewarded. The room felt rather spacious and somewhat "flash" as we soon discovered the luxury of access to a press button Nescafe machine – a pleasant reward when coming in from the cold.

The meeting began with a few reminders including annual membership subscriptions remain due, also, our next meeting is on Saturday August 27<sup>th</sup> when we will be travelling to Euroa to join the Strathbogie Ranges Group for a presentation by Leon Costermans. Leon is a highly informative and engaging speaker of considerable renown who is well worth making the trip to see. We did not have our regular plant raffle door prize for the evening but Neil Humpreys once again saved the day with his generosity by bringing along more books free for the taking. In place of the plant raffle every attendee was encouraged to peruse the selection and take a book home. This was also the last meeting for Neil with our group as a new home and lifestyle in Melbourne is on the horizon. I'd like to take this opportunity to say a very big thankyou to Neil for all his many contributions to APS Mitchell over the years both on and off the committee in roles of Vice President, President, Guest Speaker, Grant application writer extraordinaire, contributions to the newsletter and behind the scenes at Plant Expos, meetings and many other activities. With formalities out of the way Ian moved quickly into his presentation.

### Landscape Restoration...

Ian and Christine's 13ha property near Glenaroua was once part of a larger sheep grazing property with only remnant trees, native grasses and almost no remaining understorey other than 10 Wattles left on site. There are many reasons why one may wish to embark on a landscape restoration project, some of them being for conservation values, managing erosion and providing wildlife habitat.

Starting in 2002 Ian began with fencing off the 6ha project area to allow natural regeneration to commence. A standing tree which had been ringbarked by sheep (possibly 100 years ago) was retained for bird and wildlife habitat. The view to this tree would become a measure of how the site's restoration progressed and by 2006 good results were gained from just excluding grazing animals. (See images of the site 2002, 2006 at right). Now in 2016 there is a canopy including well developed young trees and the understorey is just starting to develop. Ian has planted 1000 understorey plants mostly using a crow bar in the hard soil and recalled his neighbour once saying he thought Ian was "being a bit optimistic" at the time.

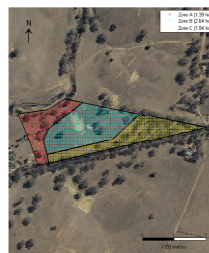
The main problems faced on the site were weeds (spear thistle, gorse & sweet briar rose), a lack of understorey (10 *Acacias*), and erosion and in particular, tunnel erosion. Tunnel erosion occurs as trees are lost in the landscape and when not replaced their roots die and rot out. Water then gets into the cavities created and causes tunnel or gully erosion. Heavy rains can then quickly chop out and erode large areas or a whole gully. A treatment for this problem can be deep ripping and diversion banks. In the case of the gully-head erosion on Ian's property the previous owners had dumped rubbish in the area as a quick fix. As using rubbish as fill can still result in cavities and continuing erosion this needed to be addressed and the job of resolving the issue took Ian 2 years. Eventually 6 cubic meters of glass, barrels of oil and other materials was removed from the gully and replaced with rock.



2002 - Restoration Site fenced to exclude grazing  
Photo: Ian Julian



2006 - Natural regeneration underway  
Photo: Ian Julian



Left: Gully erosion works  
Middle: 2016 Developing canopy & young understorey  
Right: Site plan view  
Photos: Ian Julian

(Continued on page 4)

## (Continued from page 3)

- Is the land subject to inundation?
- Are there Environmental Overlays?
- Is there a Salinity Management Overlay? If so you may need a planing permit. In the Mitchell Shire a planning permit will be needed to remove any trees once they are over 10 years old. An aspect of the rationale for this is that 31 tonnes of salt goes into the Murray River System per annum which has been caused by the removal of vegetation.
- What is the Bioregion?
- What is the EVC: Ecological Vegetation Class - Where do plants grow in the landscape?
- What is the soil type?
- What is the average rainfall?

Bioregions are a landscape-scale approach to classifying the environment using a range of attributes such as climate, geomorphology, geology, soils and vegetation. There are 28 Victorian named and numbered Bioregions which are grouped by land form. An example is the Victorian Riverina Bioregion which is associated with the eight river basin tributaries of the Murray River following flows draining north, west and south west from the Great Dividing Range of eastern Australia. Within the various regions are Ecological Vegetation Classes (EVCs) which are also named, numbered and described for which species listings and other information is available.

**Biodiversity Interactive Map:** <http://mapshare2.dse.vic.gov.au/MapShare2EXT/imf.jsp?site=bim>

The screenshot displays the 'Biodiversity Interactive Map - 3.2' web application. The main map area shows the state of Victoria, Australia, with various regions labeled. A legend on the right lists categories like Land Use, Environment, and Infrastructure. The bottom of the screen shows map controls and a scale bar.

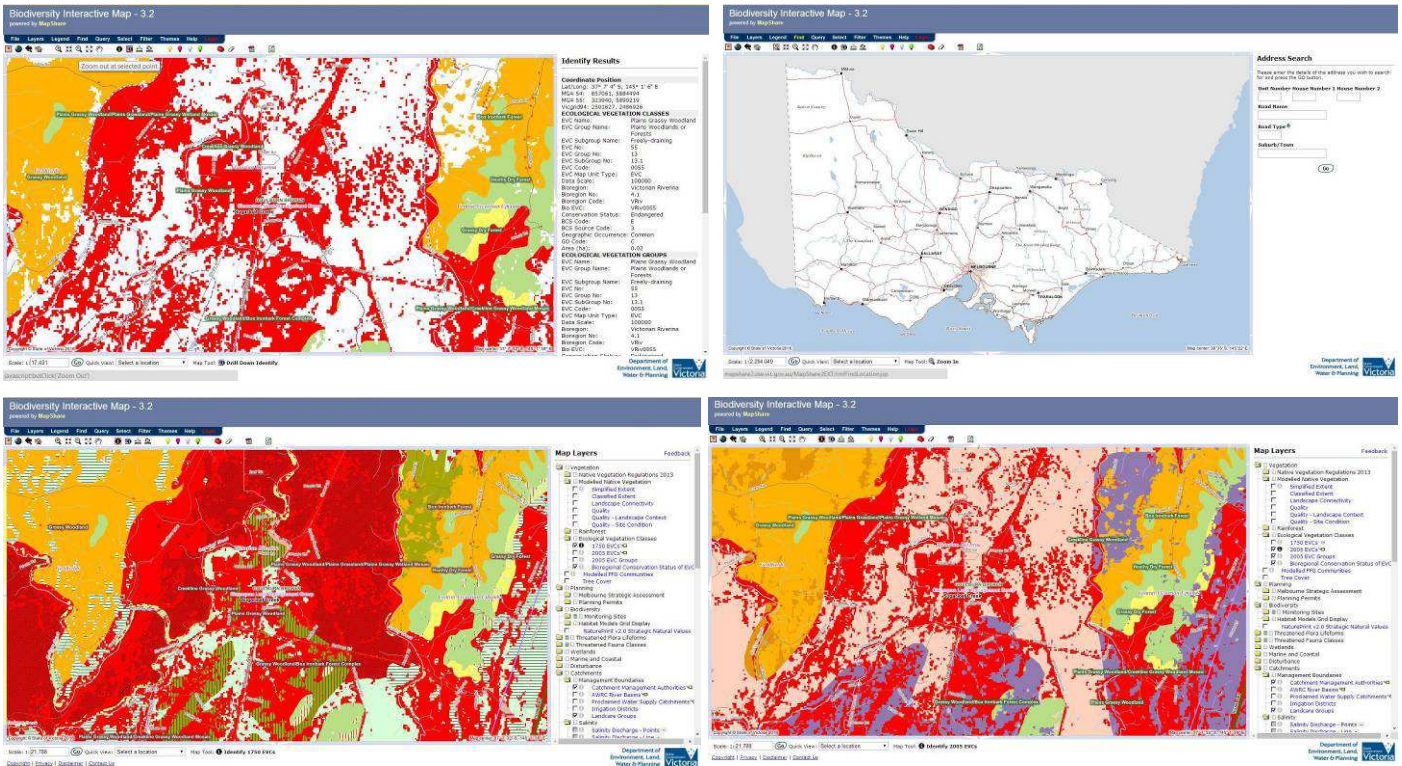
(Continued on page 5)



# July Meeting Report continued...

(Continued from page 4)

Classes. In the examples it was easy to see the changes in predominant vegetation that had occurred in the landscape over time due to settlement and grazing.



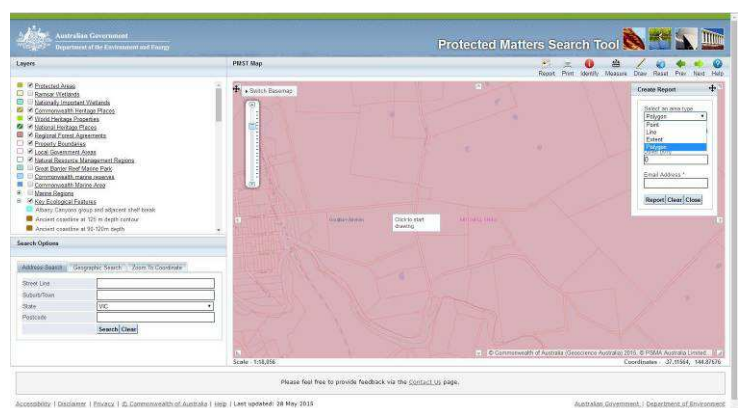
## Protected Matters Search Tool:

<https://www.environment.gov.au/epbc/protected-matters-search-tool>

The Protected Matters Search Tool is related to the Biodiversity Protection Act and covers the whole of Australia. Information on the site includes Landscape Protection Values and can be taken to property level. The tool can be used to generate a report for your property. The report can provide information on matters of environmental significance, threatened environmental communities and species, reserves, critical habitats, invasive species and other information. Once a report has been initiated a PDF will usually be emailed within 15 minutes.

To create a report:

- ⇒ Click on the link to the Interactive Map Tool.
- ⇒ Select the layers you wish to see.
- ⇒ In the search box enter the desired address, click search and then accept.
- ⇒ Click the Report button, select a point or draw a polygon and add a desired buffer zone. Include an email address then click report.



(Continued on page 6)

# July Meeting Report continued...

(Continued from page 5)

Both these tools can assist with choosing specific plants for a project to help with endangered species in a given region. In our region the Golden Sun Moth, a number of frog species and Gliders are just some of the local endangered species. The Striped legless lizard was also found around Broadford recently. Introduced and invasive species also need to be a consideration in planting decisions and selection. As an example: Pine species can be a habitat for Indian Myna.

## EVC/Bioregion Benchmark for Vegetation - Victorian Riverina bioregion

(see images at right & pg 4):

[http://www.dse.vic.gov.au/data/assets/pdf\\_file/0009/241947/VRiv\\_EVCs\\_combined.pdf](http://www.dse.vic.gov.au/data/assets/pdf_file/0009/241947/VRiv_EVCs_combined.pdf)

This online and downloadable PDF is a useful tool for planning species mix and density. It contains descriptions of the different Ecological Vegetation Classes including where they occur, also detailed benchmark information including percentages for tree canopy cover, tree size, various understorey and types. For example, in EVC 3: Damp Sands Herb-rich Woodland the ideal number of larger trees is 15 per hectare with a bench mark size of 70cm DBH (diameter at breast height). Other information includes a brief list of major species, percentage of organic matter, amount of logs per hectare and a list of major weed species.

The Goulburn Broken Catchment Authority has its own revegetation information site. The Revegetation Guide for the Goulburn Broken Catchment was initially funded by an NRE project underwritten by the sale of Telstra. The guide was originally in hard copy form but is now only available online. The site has been having intermittent problems of late and links may not always work but are worth a try:

[http://www.gbcma.vic.gov.au/land\\_and\\_biodiversity/resources\\_publications/revegetation\\_guide\\_for\\_the\\_gbc](http://www.gbcma.vic.gov.au/land_and_biodiversity/resources_publications/revegetation_guide_for_the_gbc)

An alternative link is:

<http://www.gbcma.vic.gov.au/revegetation/>

In the GBCMA guide you will find information on local EVCs, soils and sites are also named so it makes it possible to visit sites to view local plant communities. Some of the locations have been damaged since the guide was written but the guide will give a good idea of what you should expect to see. The tree species list is a good list but the shrubs listings can be limited.

A further site which can be used to search for species listings in a given area is the **Victorian Biodiversity Atlas**:

<https://vba.dse.vic.gov.au/vba/#/>

The Victorian Biodiversity Atlas opens to a log in or sign up page and there is also the option to log in as a guest. From this point the Atlas is accessed via the Search menu. Once the Species Lists and Maps area is reached a search can then be undertaken. The search uses a similar process to the Protected Matters Search Tool where a search point and buffer or shape is placed on the map, then click the search button and listings for the selection will be generated.

**Victorian Biodiversity Atlas**

Search results for: **Acacia**

ID	Species	Scientific Name	Common Name	Distribution	Conservation Status	Date Origin	Date Found	Date of Observation
4771	Acacia	Acacia	Acacia	Acacia	Acacia	Acacia	Acacia	Acacia
4772	Acacia	Acacia	Acacia	Acacia	Acacia	Acacia	Acacia	Acacia
4773	Acacia	Acacia	Acacia	Acacia	Acacia	Acacia	Acacia	Acacia
4774	Acacia	Acacia	Acacia	Acacia	Acacia	Acacia	Acacia	Acacia
4775	Acacia	Acacia	Acacia	Acacia	Acacia	Acacia	Acacia	Acacia
4776	Acacia	Acacia	Acacia	Acacia	Acacia	Acacia	Acacia	Acacia
4777	Acacia	Acacia	Acacia	Acacia	Acacia	Acacia	Acacia	Acacia
4778	Acacia	Acacia	Acacia	Acacia	Acacia	Acacia	Acacia	Acacia
4779	Acacia	Acacia	Acacia	Acacia	Acacia	Acacia	Acacia	Acacia
4780	Acacia	Acacia	Acacia	Acacia	Acacia	Acacia	Acacia	Acacia

**Victorian Biodiversity Atlas**

Search results for: **Acacia**

ID	Species	Scientific Name	Common Name	Distribution	Conservation Status	Date Origin	Date Found	Date of Observation
4771	Acacia	Acacia	Acacia	Acacia	Acacia	Acacia	Acacia	Acacia
4772	Acacia	Acacia	Acacia	Acacia	Acacia	Acacia	Acacia	Acacia
4773	Acacia	Acacia	Acacia	Acacia	Acacia	Acacia	Acacia	Acacia
4774	Acacia	Acacia	Acacia	Acacia	Acacia	Acacia	Acacia	Acacia
4775	Acacia	Acacia	Acacia	Acacia	Acacia	Acacia	Acacia	Acacia
4776	Acacia	Acacia	Acacia	Acacia	Acacia	Acacia	Acacia	Acacia
4777	Acacia	Acacia	Acacia	Acacia	Acacia	Acacia	Acacia	Acacia
4778	Acacia	Acacia	Acacia	Acacia	Acacia	Acacia	Acacia	Acacia
4779	Acacia	Acacia	Acacia	Acacia	Acacia	Acacia	Acacia	Acacia
4780	Acacia	Acacia	Acacia	Acacia	Acacia	Acacia	Acacia	Acacia

(Continued on page 7)

## July Meeting Report continued...

(Continued from page 6)

The research Ian put into his project and resulting information was used to secure funding under a Woodlands Tender. Woodlands Tender is a competitive tendering process which provided funds in return for meeting set conservation criteria and a 10 year commitment to management and reporting on the project site. The main aims of the project are: To control invasive species, plants and animals, add supplementary plantings of mainly large tufted graminoids (grass or grass-like plants e.g. grasses, sedges, rushes) (in Zone A), annual reporting, annual photo-point monitoring and permanent protection.

Some of the other works completed as part of the project are deep ripping and the creation of diversion banks to manage the gully erosion, ongoing weed and pest management. Last year a new weed to the property appeared – Blackberry, which was probably brought in by foxes and a flood also brought in wild garlic and St Johns Wort, which is why it is very important to regularly get out in a project site to check on and maintain weed control. Plantings to date include: River Red Gum, Yellow Box, *Allocassurina*, Silver Wattle, Black Wattle, Blackwood, Lightwood, Hedge Wattle, Spreading Wattle, Golden Wattle, Sweet Bursaria, Grey Parrot Pea, Grey Everlasting, Tree Violets, *Dianellas*, Grasses, *Lomandras* and Lilies with more plantings ongoing.

Further aspects to consider when planning a project are: Roads and movement of fauna. Also consider a willingness to permanently protect a restoration site – funding assessors will want to know if a project will still be there in 10 years time. Sourcing plants is also a consideration, local nurseries, David Laurie and growing your own plants are some of the options. Thinking has also been changing recently regarding the question of local provenance. Previously local provenance was considered to be a 20km radius but due to a shrinking genetic pool many species are losing genetic vigour and diversity so current thinking is moving toward larger radiuses and a wider regional approach. This year a 10,000 Silver Banksia Project is underway through the Goulburn Broken Catchment Management area – 10,000 Silver Banksia have been grown from provenances all around the region and are currently being distributed though out the catchment. These plantings will then provide seed into the future. Additional benefits of the project have been the protection of a 1.2 meter diameter tree that is at least 200-300 years old. Ian also hosts a school project each year where students visit the property, learn about landscape restoration and see that it is possible for anyone to do these works and that you don't have to be someone special to succeed at a project like this. Positive outcomes for the project have been the Conservation Covenant now protecting the land and a successful Woodlands Tender bid which was not about making money, rather extra dollars to get the job done. Into the future, Ian aims to maintain the grassland area and plans to use "Eco-thinning burning" as a management tool to prevent the grassland becoming woodland - This will also facilitate the spread of *Themeda*, Kangaroo Grass and *Microseris*, Yam Daisy. Under the Woodlands Tender Criteria this method of management is currently not allowed, however, thanks to the successful Trust for Nature Covenant Ian now has the approval to do so beyond the first 10 years of the tender period.

Land-holder initiated landscape restoration projects complement the many works being done by Landcare groups around the region. Over the years Ian's local Landcare group have now been responsible for planting 180,000 trees in their area. Every new project be it big or small, enhances biodiversity and expands a growing community of wider works already underway.

## Garden Guide- What's to do in August...

By Barbara Mau

Some three decades ago it became fashionable, among northern hemisphere landscape architects, and a little later in Australia, to use ornamental grasses in garden designs. Since the '80s grasses have had numerous incarnations and with environmental changes have become popular again. 'Grasses' you may say... look weedy! Well that would depend on how you

place, mix and use them in conjunction with other natives in your garden. There are a multitude of Australian native grasses available from you local nurseries; small to tall, fine arching leafed to stiff, broad leafed architectural statements, for dry or wet soil, full sun or shade, garden beds or as container plants. As accent plants, borders or mass planting, or indeed difficult slopes.

The play of light, shadow, texture and contrast are among the elements adding to a gardens beauty. The versatility of grasses are invaluable, fine leafed grass texture can soften hard surfaces, or brings dynamic contrast to larger leafed neighbours. Combining similar textured grasses, or mass planting one species, can create restful spaces. Careful

(Continued on page 8)



## Garden Guide- What's to do in August continued...

By Barbara Mau



*Austrostipa elegantissima* Feather Spear-grass with *Chrysoscephalum*  
Photo: Barbara Mau

placement of grasses, in single tussock or multiples, among other native plants, can be arrestingly beautiful. By positioning the grasses against a dark background, to catch morning or evening light from behind (by side lighting or back lighting) the sun light will throw the plant into silhouette, illuminating each tiny detail, minute hairs, feathery awn, delicate flowers, seed-heads, and the entire plant shimmers before you. To achieve this breath-taking spectacle, it may pay to plant some favourite grasses in easy to move containers, positioning them around the garden until you have the desired effect.

Below I have outlined some that I grow in my garden, because they are hardy, easy to grow and local. However there are so many more; *Lomandras*, from small to large varieties, *Dianellas*, small and large with their lovely nodding blue flowers. *Anigozanthos*, the Green Kangaroo Paw, *A flavidus* is very hardy and great for difficult slopes and smaller, *Anigozanthos* 'Bush Pearl', flowers for most of the year. *Poas* too make beautiful specimen or group plants and are so iconically Australian. And our local *Xanthorrhoea Minor*, Small Grass Tree that you will find on Mt Piper could provide the perfect focal point in your garden.

So... closer to home and easily grown from seed:

*Austrostipa elegantissima*, Feather Spear-grass or Soft Feather Grass

produces beautiful silver to golden gossamer haze when flowering. When backlit by northern or western sun the spectacle, I guarantee, will unhinge your gardener's heart! This is a tussock grass, growing to 50-80cm to 1 m tall, flowering from September to January. It remains a neat, deep green, rounded tussock for the remainder of the year. *A elegantissima* prefers an open sunny, to part shade position, in well drained soil. It will grow happily as a backdrop to lower plants, among shrubs, as a feature in rockeries or under Eucalyptus trees.

*Austrostipa mollis*, Supple Spear-grass, is a striking grass when in flower. It forms a small dull green tussock, 30cm high, from which rise erect, striking, dense flower heads on robust stems to 1.5cm high, from September to January. *A mollis* loves dry, well drained, gravelly soils in full sun to light shade. This grass looks spectacular when planted in groups where you need an accent of height and soft, swaying movement.

*Austrostipa scabra*, Slender Spear-grass is a smaller tussock growing to 25cm high and flower stems 30 to 60 cm high from August to January. It has fine, dull green leaves above which rise numerous soft silky flower heads. *A scabra* is very drought tolerant, enjoys full sun, well drained, basalt or sedimentary soils. Planted in small groups among native grassland flowers, it brings contrast, softness and movement to a native garden bed.

*Dichelachne crinita*, Long Haired Plume-grass, adds a wonderful, soft, butter yellow swaying statement, should you have plenty of space. It looks magnificent when planted in large drifts among other grassland plants. A mid green, fine leafed tussock, with flower stems rising 1m above its foliage, the cream coloured flower plumes move in a rippling motion in the summer breezes from October to January. *D crinita* thrives in full sun, well drained soil, is hardy and self-seeds readily.

*Rytidosperma geniculatum*, Kneed Wallaby-grass, a small versatile and decorative grass for planting amongst low growing native flowers. *R geniculatum* has fine dense mid green leaves forming a compact little tussock, 15 to 20 cm high, with flower stems 20-50 cm high, flowers from October to December and again in autumn. The compact habit makes this little gem perfect for any garden bed, rockery, containers and lawns. It will grow happily in well drained soil, full sun or part shade.

*Rytidosperma racemosum*, Slender Wallaby-grass, has a compact tussock of fine mid green leaves with slender flower heads that are born on graceful, slightly arching stems. *R racemosum* grows to 20cm high and the flower stems 20 to 60 cm, it enjoys well drained, soil full sun or part shade. The long flowering time, August to April, makes this grass a great asset. Plant it among flowering natives or in drifts under trees.

These are all available at indigenous or native plant nurseries. If you haven't already, give them a go and be delighted.

To see how landscape designers have used grasses to great effect around the world take a peak at the websites below.

Piet Ordolf <http://oudolf.com/>

Bernard Trainor

<http://bernardtrainor.com/projects/>

James Van Sweden

<http://www.ovsla.com/portfolio/>

Until next time, happy gardening!



*Xanthorrhoea minor* - Small Grass Tree  
Photo: Barbara Mau



## Reminders, A P S Victoria Diary Dates & Other Events

### Thank you

- For the various contributions of articles, answering pesky questions, event information, photo's, feedback, proof-reading, researching & providing other information as needed and general support...

#### A BIG THANK YOU TO:

Bill Barker,  
Ian Julian,  
Barbara Mau,  
Maureen Runge,  
Lorraine & Brian Weir.

### A P S VIC DIARY DATES...

#### September 3 -

APS Wilson Park Plant Sale.  
Wilson Botanic Park, Princes Hwy, Berwick. 9 am - 4 pm.

#### September 3 & 4 -

Bendigo Native Plants Group Flower Show. Rotary Gateway Park 26 High St, Kangaroo Flat.

#### September 10 -

APS Yarra Yarra Native Plants Sale (no Expo this year).  
Eltham Senior Citizens Centre, 903 Main Rd, Eltham. 10 am - 4 pm.

#### September 17 & 18 -

3rd Quarterly Meeting and AGM, Hosted by ANPS East Gippsland. Bairnsdale Bowls Club, Cnr Wallace & Grant Sts,

Bairnsdale. AGM at 4 pm.

#### September 17 & 18 -

ANGAIR (Anglesea and Aireys Inlet Wildflower and Art Show) Anglesea Memorial Hall, McMillan St, Anglesea. 10 am - 4:30 pm.  
Small entry fee.

#### October 1 & 2 -

APS Grampians Group Pomonal Native Flower Show. Pomonal Hall 9:30 am - 5 pm

October 2 - Wartook Gardens Open Garden. 2866 Northern Grampians Rd Wartook. Adults \$10

#### October 15 & 16 -

South Gippsland Native Plant Sale & Flower Show. Gippsland Historical

Automobile Club Pavilion, Leongatha Recreation Reserve. 10 am - 4 pm



### OTHER EVENTS...

#### August 20 -

VNBC Sale Day. Harry Atkinson Centre, Lake Grove, Coburg Lake Reserve. 9:30 am - 12 pm \$2 Entry  
[www.vicnativebonsai.com.au](http://www.vicnativebonsai.com.au)  
[secnativeclub@gmail.com](mailto:secnativeclub@gmail.com)

#### September 24 & 25 -

Yea Garden Expo. Yea Race Course Entry \$5 children free. 10 am - 4 pm both days.

*Continued on page 11...*

## Committee & Contact Information

AUSTRALIAN PLANTS SOCIETY, MITCHELL GROUP INC.  
PO Box 541, Kilmore, Victoria, 3764 No. A0054306V  
Email: [aps.mitchell@gmail.com](mailto:aps.mitchell@gmail.com)  
Website: [www.apsmitchell.org.au](http://www.apsmitchell.org.au)

### Committee Members

President: Ian Julian 0438 270 248

Vice President: Barbara Mau 5781 0984

Secretary: Maureen Runge

### Treasurer/Memberships:

Bill Barker 5783 3838

Committee: Janis Baker, Leanne Egan, Neil Humphreys, Dawn McCormack, Jeanine Petts.

Group Librarian: Barbara Mau

Plant Sales: Brian & Lorraine Weir 5783 2912

Newsletter Editor: Jeanine Petts 5785 1434

### Newsletter contributions:

Contributions should be sent to Jeanine Petts  
Email: [wattle gum@southernphone.com.au](mailto:wattle gum@southernphone.com.au)

Post: PO Box 381, Pyalong Vic 3521

For inclusion in the next Newsletter please forward contributions prior to the first Monday of each month.

## Can you assist? Planting helpers needed August 22nd...

The rescheduled 500+ planting project of mostly trees and shrubs, plus grasses and sedges at Whiteman's Reserve will be going ahead on Monday 22nd August. Students from Broadford Secondary College will be participating (from 1:45pm - 3:00pm). But more helpers are very much needed. Set up is from 10:30am, including laying out plants and guards and perhaps digging holes (Hamilton tree planters, maybe mattocks) and perhaps planting a few tricky species (such as sedges in wet gullies). We will then retire for a leisurely lunch at the Reserve or at Fleming Drive (depending on the sun). Soup, bread and tea/coffee will be provided but please bring along something else to share. We will then re-gather at 1:30pm to work with the students continuing planting. Should plants remain to be planted after the students depart, we may continue planting for a short while but no later than 4:00pm. Additional helpers will be most welcome any part of the day to either lay out, plant or to help direct students. Any assistance will be very valuable.

If attending, please bring a heavy hammer/mallet for the guard stakes and (if you can transport it) a wheel barrow. We will have to transport everything from Brucewater Court (where I suggest you park - it's too soft to take vehicles into the reserve). Wearing sturdy boots is also recommended. Please RSVP (for catering purposes).

Peter Mitchell, Broadford Land Management Group  
[mitchell.moss@iinet.net.au](mailto:mitchell.moss@iinet.net.au) Phone 0468 795 954

*APS Mitchell*  
*Annual Spring Plant Expo & Sale*  
*October 15th, 2016*

*9 am - 3 pm*

**Kilmore Memorial Hall**

**14 Sydney St, Kilmore**



**Native Plant & Flower Displays**



**BirdLife Australia Display**



**Kilmore Art Society Display**

Art by Local Artists:

Themes of native fauna, flora and Aussie landscapes



**Plant, Book & Art Sales**

APS Mitchell - Assorted Native plants

APS Victoria - Books

Joan & Peter Broughton, Ironstone Park - Unusual Native Plants

John Forrester - Anigozanthos (Kangaroo paws) & a small range of  
Callistemon (Bottle Brush) & Scaevola (Fan-flower)

Kilmore Art Society - Art by local artists

La Trobe indigenous plant nursery - Indigenous tube stocks

Neil's Native Plants - Specialising in plants not often found in nurseries

Russell Wait - Eremophilas (Emu Bush)

Vaughn's Australian Plants - Rare & Unusual Native Plants

**Volunteers will be needed to assist with: Donations of specimens for floral display, Setting up on Friday October 14th, also on Saturday October 15th with Ticket Sales/Entry, Plant Sales, Catering (Tea & Coffee), Pack up & Clean up etc.**

**Enquiries & further information please contact Ian Julian: Ph 0438 270 248**



## APS VIC DIARY DATES & OTHER EVENTS continued...

**September 10 & 11** - Open Garden of Pam and Jim Yarra – A Sustainable Habitat. 65a Dickasons Road, Heathmont. Melways 62B2. 10.30 am to 4.30 pm. Admission \$6, students \$4.

**October 7, 8 & 9** - Horsham Garden Festival Weekend hosted by Wimmera Growers of Australian Plants Inc.

**October 22** - APS Echuca Moama Native Plant Society – Native Flower Showcase. Echuca Uniting Church Hall, Hare Street, Echuca. From 9.00 am to 4.00 pm. Native plants to attract bees and birds to the garden.

**October 22** - APS Echuca Moama Native Plant Society – Native Flower Showcase. Echuca Uniting Church Hall, Hare Street, Echuca. From 9.00 am to 4.00 pm. Native plants to attract bees and birds to the garden

**October 22 & 23** - Growing Friends Spring Plant Sale – RBG Cranbourne. 10.00 am to 4.00 pm. (Mel 133 K10).



**NATIVE PLANT & BOOK SALE**  
10 SEPTEMBER 10am-4pm

**Senior Citizens Centre**  
903 Main Road, Eltham

A 'Spring Outdoors' event



Huge range of native & indigenous plants including short & tall grafts  
LaTrobe Wildlife Sanctuary Nursery  
SunValley Plants Natural Plantscape Nursery  
Vaughan's Australian Plants  
SunTuff Plants Member growers

Organised by Australian Plants Society  
Yarra Yarra Group Inc.

# Australian Flower Show

## Bendigo 2016

**Saturday 3 September**  
**Sunday 4 September**

**9.30am - 4:30pm**

**Entry \$3 (children free entry)**

## Flower Display Plant & Book Sales

**Self Drive Tour Map of Local Bushland**

**Rotary Gateway Park**  
**22a High Street**  
**Kangaroo Flat, Bendigo**

☎ 0400 149 319  
bendigonativeplantgroup@yahoo.com.au  
Incorporation No: A0014487F



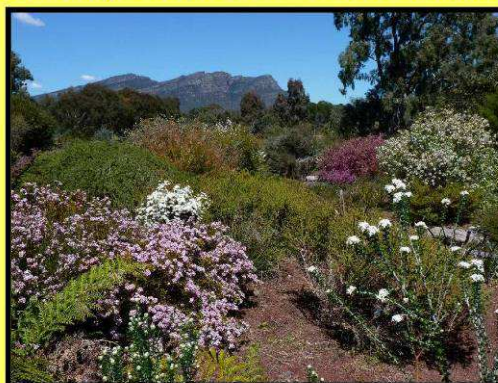
## WARTOOK GARDENS

### Open Garden - Grampians



**Adults \$10**

**Sunday October 2<sup>nd</sup> 2016** 2866 Northern Grampians Road, Wartook



See how Jeanne & Royce Raleigh have converted an open paddock into a 5 acre multi-award winning garden, one of Victoria's best native gardens.

Marvel at the diversity of 1000 species of native plants including Hakeas, Dryandras, Dampieras and Lechenaultias and many other unusual low rainfall area plants. There is also an exotic section as well with 150 roses, plus irises, bulbs, aquilegias etc.

Be delighted by the bird activity, as over 120 species have been recorded in the garden.

**Plants for sale.** **BBQ Lunch**  
**Suitable for wheelchairs and lots of seats.**

While in the area visit the **POMONAL WILDFLOWER SHOW (1-2 October) POMONAL HALL**

All Proceeds to Wimmera Healthcare Group

Enquiries – ph.(03) 5383 6200



Australia's Premier Open Garden Weekend(s)

# Garden designfest.



**Two Weekends of Australia's best display  
of professionally designed gardens!**

- |   |  |
|---|--|
| <b>1</b> 12 and 13 November<br>Gardens in Melbourne<br>Metropolitan area and<br>the Mornington Peninsula. | <b>2</b> 19 and 20 November<br>Gardens in Regional Victoria:<br>Euroa, Bendigo, Geelong,<br>Macedon, West Gippsland<br>and Ballarat. |
|---|--|

Garden DesignFest 2016 offers you the opportunity  
to visit more than 30 professionally designed private gardens  
over two weekends this Spring, including; Paul Bangay,  
Robert Boyle, Carolyn Blackman and John Patrick

For more information:

[www.gardendesignfest.com.au](http://www.gardendesignfest.com.au)

## Garden designfest.



*Garden DesignFest is a Rotary project and proceeds go to local charities.*



KAY & BURTON

