



*Dillwynia sericea*

# NEWSLETTER

AUSTRALIAN PLANTS SOCIETY, MITCHELL GROUP INC.

aps.mitchell@gmail.com

PO Box 541, Kilmore, Victoria 3764

Inc# A0054306V

## March 2017

Volume 4, Issue 2

## March news...!

Hello, and welcome to our March edition!

Autumn's beautiful weather is here and let's hope regular rain along with a new planting season is on the way as well.

I recently found a couple of small surprises in the garden in the form of two self seeded *Correa* popping up (photos at right). Brian Weir reminded me that I should grow them on and see how they turn out as there is always a chance of ending up with an interesting hybrid. I'll be taking Brian's advice so watch this space for any future results :-).

As suggested in last issue's meeting report a regular plant profile is now included in the newsletter (see page 7).

We could still do with another regular writer for the newsletter so if anyone feels up to contributing even a small article each month (only Feb-Nov) please feel free to contact me.

Our April edition will be issued on or close to the second Monday (April 10th).



Surprise *Correa* seedlings -  
*Correa glabra*? & *Correa alba*? Photos: J Petts

Contributions both large and small are always enthusiastically welcomed and should be sent in by Monday April 3rd.

Email contributions to:  
[wattlegum@southernphone.com.au](mailto:wattlegum@southernphone.com.au) or  
post to PO Box 381 Pyalong Vic 3521.

Many thanks, cheers to all and hope to see you at a meeting soon,

Jeanine :-)

### Inside this issue:

*March & General  
Meeting Information* Pg 2

*Memberships* Pg 2

*Help welcomed at  
Tallarook Arboretum* Pg 2

*February Meeting  
Report* Pg 3

*Schoenia cassiniana* Pg 7

*Reminders, APS Vic  
Diary Dates etc...* Pg 8

*Committee & Contact  
Information* Pg 8

## *Hello from the Echuca Moama Group Australian Plant Society...*

Our group are going to be working with the Rushworth Wild Flower Hunt committee which is held on Sunday 27th August.

Our involvement is in it infancy as yet, I am hoping to find a Speaker to talk on the Ironbark forest and the wildflowers that can be seen there, then in the afternoon do the Wild Flower hunt in the Forest which is usually a 6km walk.

We would like to invite your group to join us on the day. More information on the event to follow, they have their first meeting in April so will know more then.

Cheers

Sue Robertson  
(President Echuca Moama APS)

## Mitchell Diary Dates..

- **MONDAY MARCH 20th**  
**7:30pm MEETING**  
**JOHN TAYLOR ROOM**  
**KILMORE LIBRARY**  
**SYDNEY ST KILMORE**  
**Members Forum**  
**Evening**
- **MONDAY APRIL 17th**  
**7:30pm MEETING**  
**Guest Speaker: To Be**  
**Advised**
- **MONDAY MAY 15th**  
**7:30pm MEETING**  
**Guest Speaker:**  
**NEUTROG, Fertilizer**  
**& new product**  
**information**
- **SUNDAY AUGUST**  
**27th: Wild Flower**  
**Hunt with Echuca**  
**Moama APS**  
**Details to be advised**
- **OCTOBER 14th APS**  
**Mitchell PLANT EXPO**  
**Kilmore Memorial**  
**Hall 14 Sydney St,**  
**Kilmore 9 am - 3 pm**



## *Help welcomed at Tallarook Arboretum...*

The Dabyminga Catchment Cooperative (DCC, which incorporates Tallarook and Reedy Creek Landcare Groups) has been responsible for the establishment and maintenance of the Tallarook arboretum for the past 10 or so years.

Quarterly working bees are held which usually attract an average of 6-8 participants. Due to the arboretum being flooded in spring much of the lovingly applied mulch was washed away, weeds now abound and the whole place is looking a bit worse for wear. The faithful band of workers could do with some assistance and any help that can be given would be most gratefully accepted.

### **Next working bee:**

**Sunday March 26th, 10am - 12 noon**

**Where: The Tallarook Arboretum, opposite the Mechanics Institute Hall**

**What to bring: Wheelbarrows, garden forks and rakes for mulch spreading, handsaws, secateurs, muscles and something to share for lunch**

**Please wear gloves and suitable shoes for outdoor work**

*For further information please call Mark South on 0467 683 316*

**MEETINGS ARE HELD ON THE  
3rd MONDAY OF THE MONTH  
(February to November)  
unless otherwise advised**

**Commencing 7:30 pm in the  
John Taylor Room,  
Kilmore Library,  
Sidney Street, Kilmore Vic  
3764**

**Entry \$2.00 Gold Coin**

**Guest Speaker**

**Door Prizes**

**Plant Sales**

**Fertilizer Sales**

**(APS Mitchell Slow Release  
fertiliser \$5.00 per 500g)**

**Use of the APS Mitchell free  
Library ( See Barbara)**

**Supper & Chat**

**VISITORS VERY WELCOME**

Members & Visitors are  
encouraged to bring along  
exhibits for our "Show & Tell"  
Flower Specimen Table

Please label plants



## *March Meeting: Monday the 20th 7:30 pm...*

*By Jeanine Petts*

Come along to our March meeting for a Members Forum Evening... Members will have the opportunity to share and discuss projects, plants, gardens and other native plant and APS Mitchell related topics. The committee will also be putting forward ideas and important group business for general discussion and feedback. Topics for the evening will include:

- Proposed Kilmore Hospital garden project.
- The future for APS Mitchell
- April 2017 meeting falling on Easter Monday.
- Show & Tell flower table

If you have something to "show & share" with the group please come along to the John Taylor Room at the Kilmore Library Monday March 20<sup>th</sup> 7:30 pm. Remember to label any plant specimens with species names if known.

Tesselaar have generously donated approximately 10 passes to their upcoming 11<sup>th</sup> Annual Tesselaar **Gardening & Plants Expo – APRIL 22-23 2017.**

**Each pass admits 2 adults and will be available for collection by interested members at our Monday evening meeting.**



*Pelargonium rodneyanum*  
Magenta Stork's Bill  
Photo: J Petts

## *Memberships...*

For membership enquiries, information and forms and please contact Chris Cram

Ph: 5793 8270 or Email to the attention of the Membership Officer at:

[aps.mitchell@gmail.com](mailto:aps.mitchell@gmail.com)

Alternatively, membership information and forms can be found at the APS Mitchell website:

<http://www.apsmitchell.org.au/membership/>

## February Meeting Report...

By Jeanine Petts

15 APS Mitchell members and 3 Visitors attended our first meeting for 2017. The John Taylor Room felt like an old friend and we had the opportunity to make new friends when 3 visitors joined us for the evening thanks to the newspaper article which featured on page 7 in the February 14<sup>th</sup> 2017 edition of the North Central Review:

<http://www.newspaperhouse.com.au/index.php/north-central-review/342-ncr-feb-14>

Thanks must go to Ian Julian for writing and submitting the article and also a big thank you to the Editorial team at the North Central Review for publishing.

Speaking of friends, it was also great to see Brian & Lorraine back for the evening along with Brian's lovingly well grown plants for sale, quite a few of which walked out the door with happy new owners. In typical generous form and in the interest of conserving and sharing native species Brian had also brought along seeds of the Woolly Cluster Grevillea – *Grevillea eriobotrya* free for the taking for anyone wishing to have a go at propagation.

With the floor handed over to our guest speaker Steve Sinclair began his presentation:

### Lost Savannahs: The history of *Banksia marginata* on Victoria's lowland grassy plains...

Steve currently works for the Arthur Rylah Institute and has been involved in a case study researching and mapping the history and incidence of *Banksia marginata* across the Victorian Volcanic Plains. Steve was very careful to point out he is part of a team working on this project and acknowledged the work of all the other members of the team including: Keshia Atchison, Peter Griffioen, Canran Liu and Matt White.

Beginning with examples which highlighted the change in distribution of *Banksia marginata* in the landscape over time since colonisation Steve shared the following two historical quotes:

#### Howitt (1855, volcanic plains near Melbourne)

"...a wood of *Banksia* trees, which, as well as shiock, particularly affect volcanic soil."

#### Patton (1935, on the volcanic plains)

"The Proteaceae are wholly absent about Melbourne, but further away *Banksia marginata* occasionally occurs".

These two quotes provide a window into a tale of considerable change and loss of *Banksia marginata* from the landscape which occurred over less than one hundred years. Extensive research formed part of the work that has gone into reconstructing *Banksia marginata* distribution information prior to colonial settlement and among the sources of evidence researched and used were mapping records and surveyors comments from 1837 to the 1900's. In these records we see numerous notes and references to "Honeysuckle" the old common name for *Banksia marginata*. The common name was given due to the volume of nectar the Banksia produced and its use as a food plant. Nectar can be licked from the flower spikes or the flowering spike placed in water to make a sweet drink.

As part of colonial surveying practices lot corner trees AKA "witness trees" or blaze trees were used to locate and identify lot and block locations and consequently listed in historical maps and surveyors comments. 1700 useful recorded comments were found in documents which helped to provide the evidence for Banksia distribution along with old written

Lot corner trees ("witness trees")

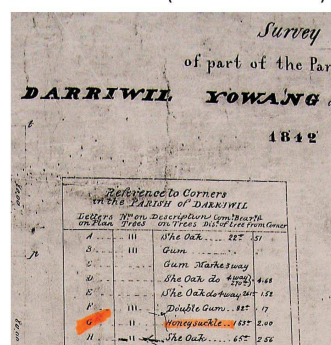
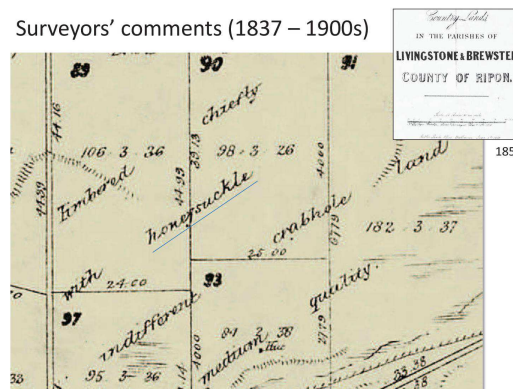


Photo: Ian Lunt (CSU)

Surveyors' comments (1837 – 1900s)



(Continued on page 4)



## February Meeting Report continued...Lost Savannahs: The history of *Banksia marginata* on Victoria's lowland grassy plains

(Continued from page 3)

descriptions, the lot corner trees mentioned above, the few paintings and photographs which exist and recent observation.

From all the research and information gathered records were compiled and digital maps created showing relevant ecological factors such as soil, elevation, terrain, rainfall, drainage and of course distribution.

Although we tend to think of the Victorian Volcanic Plains as open grassland records show that *Banksia marginata* was once very extensive across these plains and the lot corner trees noted in the various mapping resources provided excellent spatial accuracy for the case study data.

Research also showed the habitat or likely places where the *Banksia* would occur in the landscape. Although once spread from end to end of the Victorian Volcanic Plains *Banksia marginata* does not occur just anywhere in a habitat region. Factors such as fire patterns, droughts and floods and other chance events influence where in the landscape *Banksia marginata* are found. In higher rainfall areas they occur on stony rises and are not found on wetter plains while in lower rainfall areas will be found notably on rocky terrain and also absent from droughty clay plains. Some of the areas also shown to be once dominated by *Banksia marginata* were the Bega Valley, Omeo and Benambra Plains.

Examples of recorded surveyor comments which reveal and describe where *Banksia* was observed are:

'Stony land thickly timbered with Banksia'

'Ridges of trap, moderately timbered with honeysuckle and she oak'

'Indifferent crabhole land timbered with honeysuckle'

'Low wet Honeysuckle Country'

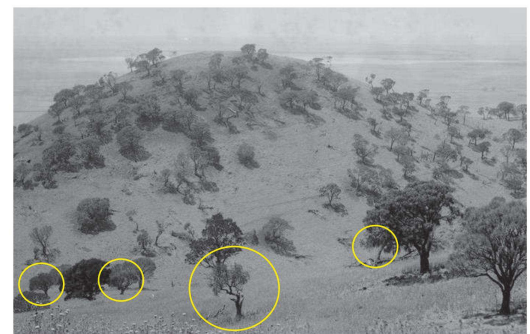
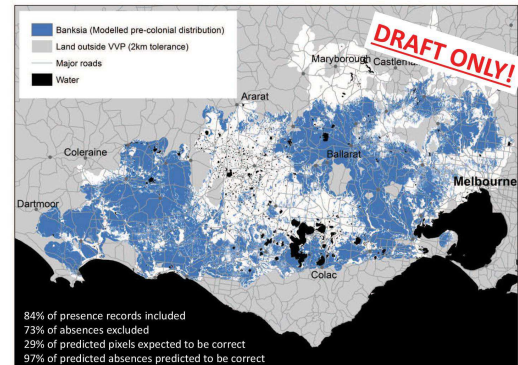
'Open alluvial flats thickly timbered in parts with Honeysuckle'

'Belt of Honeysuckle, sandy land' (lake lunette)

A photograph of Mt Elephant (near Skipton Victoria) from 1909-1914 shows remnant Silver Banksia (*Banksia marginata*) at the site. Along with Sheoak (*Allocasuarina*) *Banksia marginata* have also been noted growing with Manna Gum *Eucalyptus viminalis*, Blackwood *Acacia melanoxylon* and Sweet Bursaria *Bursaria spinosa*.

Two further historical quotes also paint a picture of their time:

**Robinson (1841)** "...a beautiful undulating country covered with dwarf banksias, gums, cherry tree..." "...under the umbrageous branches of 2 fine banksia."



G Knight . Mount Elephant summit, 1909-1914.

(Continued on page 5)

## February Meeting Report continued...

(Continued from page 4)

**Howitt (1855)** *"These downs are remarkably pleasant, and must in summer be fine, fresh places to live upon... the acacias, the Banksias, and the casuarinas, flourish there... The shacks are thinly scattered over these verdant plains, downs and high table-lands; and present a very pleasing aspect, their broom-like and flowing tresses giving a great relief to the eye from the eternal sameness of the eucalyptic forests."*

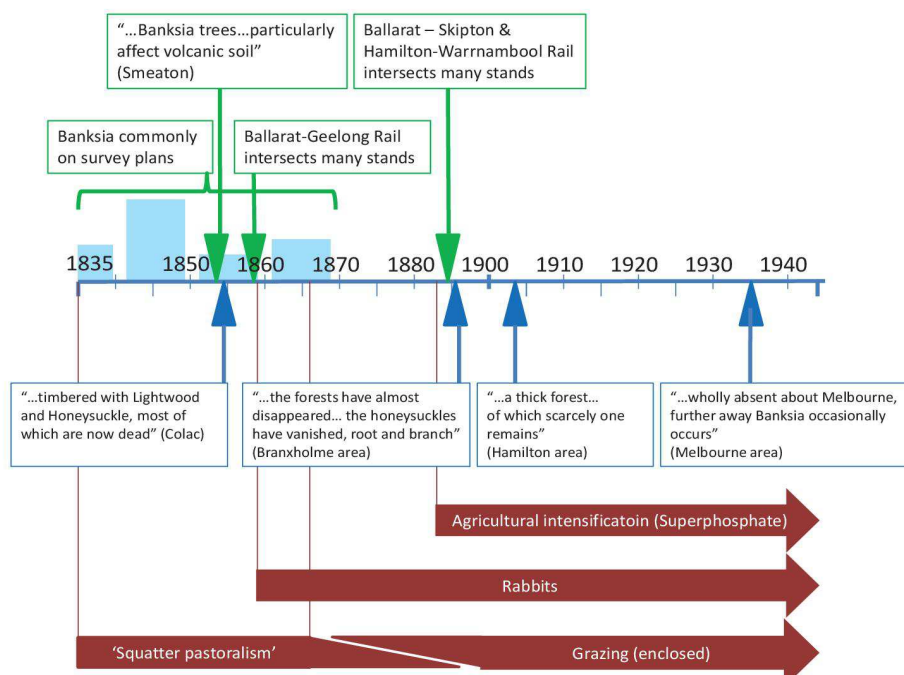
Mature old Silver Banksia reach considerable size and can be loaded with hollows which provided all important shelter for mammals, bats and birds. *Banksia* have an important ecological role play and along with shade and shelter, provide nectar for birds, mammals (including the Pygmy Possum), insects and also seeds for animals and birds such as Black Cockatoos.

On many lowland plains Silver Banksia trees are now completely absent so the question is asked: What happened? There are many likely suspects with some being:

- Livestock and introduced rabbits prevented recruitment by eating seedlings.
- Super phosphate application to farmed land adversely effected trees and seedlings taking them beyond their phosphorus tolerance.
- Too many mature trees cut down for firewood etc.
- Fire sensitivity: hot, large scale fires killed adult trees.
- Disease also possibly played a role as mention of die back is made in some historical commentary.



Of the Banksia remnants found today many are along railway easements. Mapping a time line of significant events and commentary records in relation to *Banksia marginata* show they were in trouble quite early on:



(Continued on page 6)

---

## February Meeting Report continued...

(Continued from page 5)

Restoration efforts have been underway since the 1970's with works of note starting in the 1980s at the National Trust property 'Mooramong' near Skipton, also activities by Hamilton Field Naturalists (Rod Bird and Liz Fenton) and projects undertaken by several private landholders. In 2000 the Goulburn Broken Catchment Management Authority began establishing 2 seed orchards with first plantings commencing in 2000. Seeds from the orchard were collected from 2010 and the resulting trees made available to landholders. More recently the group "Friends of the forgotten woodlands" was established in 2016 with start-up funding from Glenelg-Hopkins CMA, they are focusing on more than just Banksia and a link to a recent newsletter can be found below. Currently there is also funding for a genetic study across Volcanic Plains and hopes to emulate the Goulburn-Broken seed orchard.

Steve concluded the presentation with an open question session and Janis asked Steve to speak a little about Mount Piper specifically sightings of new species for the area, which were: *Diuris bherii* Golden Cowslips, *Dianella amoena* Matted Flax-lily, *Eryngium*, *Indigofera* and also some obscure grasses.

Show and Tell from the specimen table followed and among the display were:

*Grevillea plurijuga*

*Grevillea* 'Robyn Gordon'

*Acacia implexa* - Lightwood

*Melaleuca nesophila*

*Prostanthera magnifica*

*Pelargonium rodneyanum* – Magenta Stork's-bill

*Eryngium ovinum* - Blue Devil

*Eucalyptus lehmannii* - Busy Yate

*Calocephalus citreus* – Lemon Beauty-heads

*Chrysosephalum semipapposum* – Clustered Everlasting

*Xerochrysum viscosum* – Sticky Everlasting

In closing I would like to extend grateful thanks to Steve Sinclair for his generosity in providing access to the PowerPoint file of his presentation which has enabled historical quotations, images and other further detail to be included in this article.

**All images in this article are courtesy of Steve Sinclair.**

The following is a link to December 2016 news from Friends of the Forgotten Woodlands for further information:

[http://anpc.asn.au/sites/default/files/Friends\\_of\\_Forgotten\\_Woodlands\\_News\\_Dec\\_2016.pdf](http://anpc.asn.au/sites/default/files/Friends_of_Forgotten_Woodlands_News_Dec_2016.pdf)

---



## Plant Bio: *Schoenia cassiniana*...

By Jeanine Petts

*Schoenia cassiniana* (SHO-nee-a) (cass-IN-ee-AH-nuh) is from the family Asteraceae (Daisy) with the genus name coming from the name of a Hamburg eye specialist by the name of "Schön" which means "beautiful" in German.

The common name is Pink Clusters Everlasting and this annual herb is endemic over a wide range in both Central and Western Australia forming a conspicuous part of the spring wildflower display each year.

Growing to approximately 50cm high with an erect habit and densely hairy strap like leaves and stems. Clusters of bright pink papery bracts about 1 cm long are produced in June – November. It can be grown through summer if water is provided and prefers a light-medium well composted soil in a protected sunny position but is both drought and frost tender.

Propagation is from seed which usually germinates in 7-14 days under the right conditions. Seed can be sown directly on the ground (rake in very lightly) or in containers on a porous seed raising mix with a very light covering of the seed raising mix sprinkled over the seed.



*Schoenia cassiniana*

Image: <https://florabase.dpaw.wa.gov.au/browse/profile/8200>

### Reference:

<https://florabase.dpaw.wa.gov.au/browse/profile/8200>

<http://www.ausemade.com.au/nt/destination/a/alice-springs/ilparpa-claypans/ilparpa-flora-pink-everlasting.htm>

<http://www.perthseed.com/schoenia-cassiniana-pink-clusters-everlasting-p-1662.html?osCsid=0765bb372f9206fb57e30b3f74fd5879>

<http://bic.ala.org.au/species/http://id.biodiversity.org.au/node/apni/2893851#overview>

<http://gardendrum.com/2016/08/06/growing-everlasting-daisies-ray-floret-daisy/>

<https://www.bushtrackerownersgroup.asn.au/wildflowers/283+pink-clusters-everlasting-schoenia>

## Reminders, APS Victoria Diary Dates & Other Events

### Thank you

- For the various contributions of articles, answering pesky questions, event information, photo's, feedback, proof-reading, researching & providing other information as needed and general support...

#### A BIG THANK YOU TO:

Ian Julian,  
Barbara Mau,  
Paul Piko,  
Sue Robertson &  
Steve Sinclair

### APS VIC DIARY DATES...

**March 18 & 19** - friends of the RBGV Cranbourne Gardens Autumn plant sale.  
10am - 4pm.  
(Melways 133 K10)

**April 22** - APS Geelong Plant Sale. 'Wirrawilla', 40 Lovely Banks Rd, Lovely Banks.  
8:30am - 5:30pm.

**May 6** - APS Melton & Bacchus Marsh Plant Sale, Uniting Church Car Park, Bacchus Marsh (Melways 333 J6). 9am - 1pm. Featuring Hakeas with many unusual species. A full list is available approx. one month prior to sale and pre-orders can be sent to the secretary,

[apsmeltonbacchus@gmail.com](mailto:apsmeltonbacchus@gmail.com)

**June 11-22** - ANPSA 12-Day Natural History Kimberly Camping Tour. From Kununurra to Broome. Contact Nicky Zanen (email [nicky.zanen@hotmail.co.au](mailto:nicky.zanen@hotmail.co.au) or phone 0401 975 191) for details.

**July 22 & 23** - Friends of the RBGV Cranbourne Gardens, Winter Plant Sale.  
10am - 4pm  
(Melways 133 K10)

**September 2** - APS Wilson Park Plant Sale, Wilson Botanic Park, Princes Hwy, Berwick. 9am - 4pm.

**September 2 & 3** - September Bendigo Native

Plants Group Flower Show, Rotary Gateway Park, 26 High St, Kangaroo Flat.

**October 7 & 8** - APS Grampians Group Pomonal Native Flower Show, Pomonal Hall. 9:30am - 5pm.

**October 14 & 15** - Friends of the RBGV Cranbourne Gardens, Spring Plant Sale.  
10am - 4pm  
(Melways 133 K10)

**January 12-20 2018** - ANPSA 2018 Conference, Hobart. Pre- and post- conference tours to King Island and Tasmanian Alpine areas.

Ph: 03 5383 6200 Email: [royce@wartookgardens.com.au](mailto:royce@wartookgardens.com.au)



## Committee & Contact Information

AUSTRALIAN PLANTS SOCIETY, MITCHELL GROUP INC.  
PO Box 541, Kilmore, Victoria, 3764 No. A0054306V  
Email: [aps.mitchell@gmail.com](mailto:aps.mitchell@gmail.com)  
Website: [www.apsmitchell.org.au](http://www.apsmitchell.org.au)

### Committee Members

President: Ian Julian 0438 270 248

Vice President:

Secretary:

Treasurer/Memberships:  
Chris Cram 5793 8270

Committee: Bill Barker, Pauline Maloney, Dawn McCormack, Jeanine Petts, Norbert Ryan.

Group Librarian:

Plant Sales: Brian & Lorraine Weir 5783 2912

Newsletter Editor: Jeanine Petts 5785 1434

### Newsletter contributions:

Contributions should be sent to Jeanine Petts  
Email: [wattlegum@southernphone.com.au](mailto:wattlegum@southernphone.com.au)

Post: PO Box 381, Pyalong Vic 3521

For inclusion in the next Newsletter please forward contributions prior to the first Monday of each month.

## Flora and Fauna Guarantee Act submissions still open...

The Victorian Government is reviewing the *Flora and Fauna Guarantee Act 1988*, a key part of Victoria's legislative framework for the protection and management of biodiversity.

The Act has not been significantly amended since 1988 and approaches to conserving biodiversity have changed over the years. The impacts of climate change may also require a rethink of conservation strategies.

The review will ensure the Act provides a modern framework for biodiversity protection and management in Victoria and strong and effective protection for Victoria's native species and important habitats.

Due to the high level of interest and number of other reforms underway, the government has extended the submission period for an additional 2 weeks. Submissions will now close at 5:00pm on 28 March 2017.

Submissions can be made online, via email or post.

For details visit:

<https://engage.vic.gov.au/review-flora-and-fauna-guarantee-act-1988>