

NEWSLETTER



AUSTRALIAN PLANTS SOCIETY MITCHELL GROUP INC.

Email: mitchell@apsvic.org.au

Website: www.apsmitchell.org.au

PO Box 541, Kilmore Victoria, 3764

Inc# A0054306V

June
2019

Volume 6, Issue 5

June news...!

Hello and welcome to our June 2019 edition!

Winter is here, and out in the garden the Correas are showing their colours, providing food, and keeping the bees that are still out and about quite busy.

The committee is also busy working on a number of fronts at the moment. We continue organising our Annual Spring Expo, and will be encouraging attendees to BYO bags as we have some stall holders who aim to be plastic bag free - see page 10 for updates.

As a group, we also have another milestone to celebrate this year: APS Mitchell Group is turning 10! If you have some ideas for a 10th anniversary event please let the committee know (see below).

We have also had a few last minute changes to our proposed guest speaker line up for the rest of the year, and are still currently working on securing speakers. Further details will be made available in upcoming newsletters.



Correa alba x Correa pulchella Hybrid
pink form.

Photo: J Petts

Our next newsletter will be issued on or within a few days of Monday July 8th. Contributions to our newsletter both large and small are always very welcome! Please send contributions in by Monday July 1st. Email to: wattlegum@southernphone.com.au or post to PO Box 381 Pyalong Vic 3521.

Cheers until next month, Jeanine ☺

Inside this issue:

June & General Meeting Pg 2
Information

Membership Pg 2

Gardens for Wildlife Pg 2
news

May Meeting Report - Pg 3
Local Wildflowers

Red Box Pg 9

Spring Plant Expo Pg 10

Reminders, APS Vic Pg 11
Diary Dates etc...

Committee & Contact Pg 11
Information

Membership renewal Pg 12
form

APS Mitchell 10th Anniversary...

APS Mitchell celebrates it's 10th anniversary later on this year. The committee would like to do something a little special to recognise this milestone, and are seeking input from our members regarding ideas as to what we might like to do as a group to mark the occasion.

If you have any suggestions please let a committee member know; Chat to one of us at the next meeting, give us a phone call, or send an SMS text (see contact details on page 11). Alternatively, send your suggestions via email to: mitchell@apsvic.org.au

Please submit suggestions by July 1st 2019.

Mitchell Diary Dates..

- **MONDAY JUNE 17th**
7:30pm MEETING -
Guest Speaker:
Sophie Bickford -
Biolinks Alliance
- **PLEASE NOTE THERE**
WILL BE NO EVENING
MEETING DURING
JULY. The following
garden visit replaces
our evening meeting:
SUNDAY JULY 21st,
2pm GARDEN VISIT &
AFTERNOON TEA -
Wattle Gum Forest
Farm, Seymour
Pyalong Rd, Pyalong.
Bring a plate of
afternoon tea to
share. Tea, Coffee
etc. provided. RSVP
to: Ian 0438 270 248
or Jeanine 0409 029
603, or email:
mitchell@apsvic.org.au
- **AUGUST MEETING TO**
BE ADVISED
- **MONDAY SEPT 16th**
7:30pm MEETING -
Guest Speaker to be
advised
- **SATURDAY OCT 19th,**
9am-3pm SPRING
PLANT EXPO & SALE
Kilmore Memorial
Hall, Sydney St,
Kilmore
- **OCTOBER MEETING**
TO BE ADVISED
- **MONDAY NOV 18th,**
7:30pm MEETING -
Guest Speaker:
Glenda Lewin -
WAMA: Wildlife Art
Museum of Australia



Gardens for Wildlife news...

By Ian Julian



All set up at Wallan June Market
Photo: Norbert Ryan

Gardens for Wildlife returned to the Wallan Market this June marking the beginning of winter, and having had some rain we were hoping for some increased interest in gardening. With the market not being very active we managed to have 3 new members join and sell a small number of plants. The planned bird walk and talk for July has been put back to November as Chris Tzaros is currently working overseas, we will keep you informed as details become available.

We are still looking for a volunteer coordinator to run the G4W program. You wouldn't be alone, it would be team effort with help from the APS committee. One of the main activities would be to run the Facebook page, so if you or a family member is interested it would be great to get to get someone younger with an interest in social media involved. For more information please contact Ian Julian at g4w@apsmitchell.org.au

**MEETINGS ARE HELD ON THE
3rd MONDAY OF THE MONTH
(February to November)
unless otherwise advised**

**Commencing 7:30 pm in the
John Taylor Room, Kilmore
Library, Sydney Street,
Kilmore Vic 3764**

Entry \$2.00 Gold Coin

Guest Speaker

Door Prizes

Plant Sales

**Use of the APS Mitchell free
Library**

Supper & Chat

VISITORS VERY WELCOME

Members & Visitors are
encouraged to bring along
exhibits for our "Show & Tell"
Flower Specimen Table

Please label plants



June Meeting—Monday 17th 7:30pm...

The Executive Director of Biolinks Alliance, Dr Sophie Bickford will be visiting APS Mitchell at our June meeting to present on the Biolinks Alliance and its programs...

Dr Sophie Bickford trained as a botanist and palaeoecologist, her PhD examined the impacts of European settlement on the South Australian landscape. She has worked as a postdoctoral and research scientist with CSIRO at the National Herbarium and was appointed as lecturer in Biogeography at Monash University.

Leaving the research world to give nature a direct hand, Sophie moved to the private sector, joining Carbon Planet Pty. as Chief Scientist, to develop methodologies for conserving ecological-services for international carbon and biodiversity markets in Australia and Papua New Guinea. She is now working as the Executive Director of the Biolinks Alliance – a new organisation that has been instigated by the community to restore ecosystem health and resilience, and save threatened species, at the large scale, through central Victoria. The Alliance is developing ways to share technical and practical knowledge for ecosystem restoration and runs an annual knowledge symposium bringing together leading scientists with conservation practitioners. It is also building local community capacity to implement landscape-scale conservation through a shared learning, broad-sector collaboration and project development process called *Local 2 Landscape*. Current Local 2 Landscape projects include: Restoring Leaky Landscapes Wedderburn; Heathcote Biolinks; Mitchell Shire Glideways.

Visitors are always welcome at our meetings and the presentation will be followed by our Door Prize plant raffle, the flower specimen table (remember to bring something along from your garden) and conclude with supper & chat.



Boulton Flora Reserve 2016
Chocolate Lilies in flower
Photo: J Petts

Membership renewal reminder from Christine...

Membership renewal is due at the end of June. Please make payment either to Christine or directly to bank. However, we must receive your completed and signed membership form (see back page) for all members each year. So please either hand your forms to Christine at a meeting, email it (see below), or post it to PO Box 541, Kilmore. Thanks, Christine.

Membership Enquiries: Ph: 0458 238 270 or Email to the attention of the Membership Officer at: aps.mitchell@gmail.com Membership information, forms and contact information can also be found at our website: www.apsmitchell.org.au

May Meeting Report - Local Wildflowers...

By Jeanine Petts

It was a pleasure to arrive at our May meeting and see some familiar, friendly faces along with a few new ones. 28 people had come out to hear David Laurie's presentation, and Norbert commenced proceedings by advising the guest speaker for our June meeting had confirmed earlier in the day: Sophie Bickford will be visiting on the evening of Monday June 17th to speak on the Biolinks Alliance – A group of 18 different Landcare and Environmental groups that focus on community driven conservation, and span the area from the Grampians across to the Australian Alps, up to the Murray River to the north and down to the Dividing Range in the south.

Moving right on to our main event for the evening, Norbert began his introduction by stating that he had been looking forward to this evening's presentation for quite some time, as David Laurie is one of the foremost conservationists in our region. David moved to our area in 1985, and after building his mud-brick home, established the Valley of 1000 Hills nursery in 1993, following working as a teacher and Landcare facilitator. Norbert also advised that David propagates around 50,000 plants per year and the nursery's species list covers 3 pages.

David started his presentation by sharing that he "got into" native plants through his work with Landcare. Initially he had thought he might like to develop a "cottage garden nursery". However he ended up primarily focused on local native species, growing a variety of trees, shrubs and grasses. In addition they do grow and supply a few non-native cottage garden plants as well. David said he "basically just likes propagating plants", and advised, that some of the plants on the nursery list are only grown to order.

A brochure titled "*Mitchell Shire's Natural Treasures*" was then brought to our attention (& handed out to attendees along with the aforementioned nursery species list). The brochure lists the nature reserves around our shire, including features of the reserves, and where to find them.

Among the places David visits regularly is Mt Disappointment, and a photo from this area (taken around mid-October) was the first in a series of wild-flower and vegetation community slides shown. 2 of the predominant Wattles found growing in our region are Golden Wattle *Acacia pycnantha* and Blackwood *Acacia melanoxylon*. Blackwood has a lifespan of around 100 years, while Golden Wattle is more short-lived, lasting only around 8 years. However, even the dead stems of Golden Wattle are useful as they provide habitat for creatures such as microbats, which, live under the bark.

David obtains a collection permit from DELWP each year, and collects seed locally from across the region in areas including Seymour, Wallan, Yea, Pyalong, and also sources seed from the Dookie Seed Bank. The most plants that he has propagated in 1 year was 90,000 tubes, but the general average is usually 50,000 tubes per year. These plants are supplied to Catchment Management Authorities across the region, the Mitchell Shire, and are often used in projects such as National Tree Day. The nursery is located at 150 Reid Rd, Reedy Creek (off the Broadford – Strath Creek Rd) and is open to the general public and visitors for plant sales on Saturdays. David and Helen also sell plants at the Tallarook Farmers Market, that is held on the 1st Sunday of the month from February to December.

The busiest time for seed collecting is from October to February, and we have a number of differing and diverse vegetation communities in our region including:

- Box Ironbark Forest
- Grassy Dry Forest
- Shrubby Dry Forest
- Herb-rich Foothills Forest

(Continued on page 4)

May Meeting Report continued...

(Continued from page 3)

Of the all the species known to grow across our region, David only grows a fraction. Pink Heath *Epacris impressa*, is one species that David finds difficult to propagate, out of 500 cuttings set, there may only be a few successfully struck. The seed of Eucalyptus species can be collected at any time of year, and the capsules (nuts) may take six months to ripen and release seed. The collection season for Wattle seeds is from December through January, and David has found that in a dry season, Wattle seed may be ready for collection a week or so earlier than usual, also, in a really dry season, may not set seed at all. Wattles are not all large trees, aside from trees they range from ground cover species to small, medium and large shrub species.

Some of the species mentioned that we find locally in vegetation communities are:

- Shrubby Dry Forest:
 - Narrow-leaf Bitter-pea *Daviesia leptophylla*
 - Austral Indigo *Indigofera australis*
 - Matted Bush-pea *Pultenaea pedunculata*
- Grassy Dry Forest:
 - Sticky Everlasting *Xerochrysum viscosum*
 - Orchids – most often in flower during October to November.
 - Lilies, which, can survive some disturbance.
- Herb-rich Foothills –
 - Milk Maids *Burchardia umbellata*

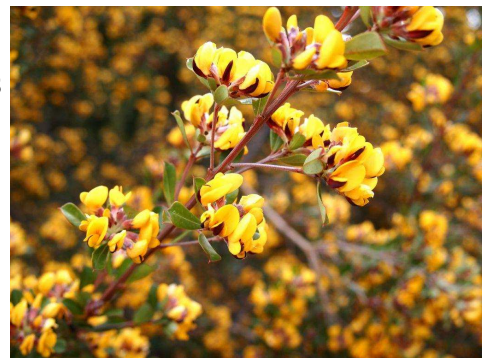
Colin Officer Reserve at Broadford, along with Bolton Flora Reserve at Tallarook are both worth visiting to see local species in flower. 145 native species have been recorded at Bolton Flora Reserve, among the species list are: 3 Eucalyptus, 2 Wattles and the rest are other species including various shrubs, grasses and orchids.

One of the predominant flower types found locally are the "Egg and Bacon species", these are members of the pea family. They attract native bees and have seed pods similar to Wattles. Some pea-flowered plants discussed were:

- Gorse Bitter-pea *Daviesia ulicifolia*
- Narrow-leaf bitter pea *Daviesia leptophylla*
- Large-leaf Bush-pea *Pultenaea daphnoides* - grows to 2m tall, is hardy and easy to propagate.
- (Some peas are hard to propagate and seedlings tend to yellow off and die, charcoal in the seed-raising mix can help prevent this.)
- False Sarsaparilla *Hardenbergia violacea*
- Handsome Flat-pea *Platylobium formosum*



Epacris impressa Pink Heath
Photo: David Laurie



Pultenaea daphnoides - Large-leaf Bush-pea
Photo: David Laurie



Hardenbergia violacea - False Sarsaparilla
Photo: David Laurie



Platylobium formosum - Handsome Flat-pea
Photo: David Laurie

(Continued on page 5)

May Meeting Report continued...

(Continued from page 4)

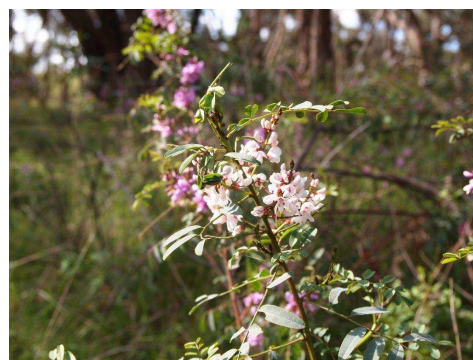
- Parrot-peas including:
 - Small-leaf Parrot-pea *Dillwynia phyllioides* – the tallest grow to 2m tall, have a spirally twisted phyllode and can be found at Glenaroua.
 - Grey Parrot-pea *Dillwynia cinerascens* – has phyllodes that reflex downwards
- Austral Indigo *Indigofera australis* – grows to 1m or a little higher and there is also a white form.
- Golden Bush-pea *Pultenaea gunnii*
- Hop Bitter-pea *Daviesia latifolia* – is found around Clonbinane and Wandong
- Running Postman *Kennedia prostrata*
- Common Wedge-pea *Gompholobium huegelii* – has interesting lemon coloured flowers
- Loose-flower Bush-pea *Pultenaea laxiflora*
- Showy Parrot-pea *Dillwynia sericea*
- Twining Glycine *Glycine clandestina*

David visits wildflower areas once a week during spring, and has noted that often plants of predominately one particular flower colour will be in bloom at each visit, also that this predominant blooming flower colour will be different over subsequent weeks. For example: mostly blue flowers, one week, yellow the next, pink another week and so on.

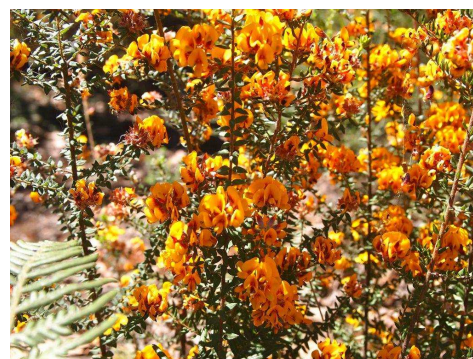
Railway line reserves are another good place to visit to see wildflowers. At one point in time, fire was quite frequently used by the railways as a weed management tool, and this has also contributed to the preservation of some species.

Further species discussed were:

- Clustered Everlasting *Chrysocephalum semipapposum*
- Fireweeds – *Senecio* species, some are very weedy and “pop up everywhere”.
- Sticky Everlasting *Xerochrysum viscosum*
- Grey Everlasting *Ozothamnus obcordatus*
- Pale Everlasting *Coronidium* sp.
- Yam Daisy *Microseris lanceolata* – these were once widespread and a staple in indigenous people’s diet. David advised that the roots have a mild parsnip taste and he has found them hard to establish in his vegetable patch. They are often confused with the weed daisy Cat’s Ear, however, identifying features of Yam Daisies are that they only have a single flower on a stem, where Cat’s Ear daisies have a branched stem and multiple flowers. Also the Yam Daisy holds it’s single bud in a drooping position



Indigofera australis - Austral Indigo white form Photo: David Laurie



Pultenaea gunnii - Golden Bush-pea Photo: David Laurie



Gompholobium huegelii - Common Wedge-pea Photo: David Laurie



Glycine clandestina - Twining Glycine Photo: David Laurie

(Continued on page 6)

May Meeting Report continued...

(Continued from page 5)

until the flower opens.

- Moth Daisy Bush *Olearia erubescens* - likes wetter areas.
- Water Buttons *Cotula* species like damp soil and grow in drainage lines and eroded gullies.
- Scaly Buttons *Leptorhynchos squamatus*
- Common Cassinia AKA Dogwood *Cassinia aculeata*
- Drooping Cassinia AKA Chinese Scrub *Cassinia arcuata* – is very aromatic with a curry-like scent when in flower.
- Dusty Daisy-bush *Olearia phlogopappa*, shrub to 2m.
- Snowy Daisy-bush *Olearia lirata*, also grows to 2m.
- Silky Daisy-bush *Olearia myrsinoides*, one of David's favourites.
- Love Creeper *Comesperma volubile*
- Native Violet or Ivy-leaf Violet *Viola hederacea* – a great rockery plant.
- Honey Pots *Acrotriche serrulata* – is one of 12-14 Heath species found in our region. They are hard to propagate as the seed has an over-ripening period and will sit in the soil for 2, 3 or even 4 years prior to germinating.
- Cat's Claw or Mountain Grevillea *Grevillea alpina*
- Heath Pink Bells *Tetratheca bauerifolia*
- Buttercup *Ranunculus* sp.
- Showy Violet or Mountain Violet *Viola betonicifolia*
- Small Poranthera *Poranthera microphylla*
- Twining Fringe-lily *Thysanotus patersonii*
- Ivy-leaf Goodenia *Goodenia hederacea*
- Hairy Annual Bluebell *Wahlenbergia gracilentia*
- Bulbine lily *Bulbine bulbosa*
- Common Beard Heath *Leucopogon virgatus*
- Thrift-leaved Trigger Plant *Stylidium armeria*
- Pine Heath *Stenanthera pinifolia* (Syn. *Astroloma pinifolia*) – found locally at Tyaak Flora Reserve.
- Grey Guinea-flower *Hibbertia obtusifolia*
- Grass-leaved Trigger Plant *Stylidium graminifolium*
- Slender Rice-flower *Pimelea linifolia*
- Native Hemp *Gynatrix pulchella*
- Pink Bells *Tetratheca ciliata* – hard to grow.
- Hop Goodenia *Goodenia ovata* – 2nd year branches strike really well.
- Milk Maids *Burchardia umbellata*
- Chocolate lily *Arthropodium strictum*
- Creamy Candles *Stackhousia monogyna*
- Spreading Flax-lily *Dianella admixta*



Olearia erubescens - Moth Daisy Bush
Photo: David Laurie



Cotula sp. - Water Buttons
Photo: David Laurie



Comesperma volubile - Love Creeper
Photo: David Laurie



Tetratheca bauerifolia - Heath Pink Bells
Photo: David Laurie

(Continued on page 7)

May Meeting Report continued...

(Continued from page 6)

- Pale Flax-lily *Dianella longiflora*
- Tasman Flax-lily *Dianella tasmanica*
- Blue Pincushion *Brunonia australis*
- Tall Bluebell *Wahlenbergia stricta*
- Swamp Isotome *Isotoma fluviatilis ssp. australis*
- Native Pelargonium: Austral Stork's-bill *Pelargonium australe*
- Magenta Stork's-bill *Pelargonium rodneyanum*
- Derwent Speedwell *Veronica derwentiana subsp. derwentiana* (Syn. *Derwentia derwentiana*)
- Pink Heath *Epacris impressa* – flowering now at Mt Disappointment.

In closing, a few final points and answers to questions revealed:

- Some recommended reading:
 - *Orchids of Victoria*
 - *Flora of Melbourne*
 - Murray Ralph's books:
 - *Seed Collection of Australian Native Plants for Revegetation, Tree Planting and Direct Seeding*
 - *Growing Australian Native Plants from Seed*
- When growing Twining Fringe Lilies, they can take up to 14-15 months to germinate and will regularly die back in the pot and then re-shoot.
- Over 40 different species that had not been seen for some time came up following the Black Saturday fires when competition had been knocked back.
- Species surveys through the years haven't seen a great deal of change. However, it is a "death of 1000 cuts" although generally there has not been a lot of change in protected areas. Also, our Mitchell Shire Council has included a number of protections in the local Strategic Plans, and we are lucky to have a pretty good shire in regards to environmental issues. In addition, new species surveys have recently been completed and are to be published in the near future.
- 1/3 of plant sales from the Valley of 1000 Hills Nursery are trees to farms, and the nursery recently reached the milestone of 1.5 million plants propagated and sold.

Mike Williams then rounded out the presentations for the evening with a brief talk on *Melaleuca*...

Melaleuca are also members of the myrtle family, Myrtaceae, and are known by common names including Paperbarks and Honey Myrtles. There are around 300



Brunonia australis - Blue Pincushion
Photo: David Laurie



Isotoma fluviatilis ssp. australis - Swamp Isotome
Photo: David Laurie



Veronica derwentiana subsp. derwentiana (Syn. *Derwentia derwentiana*) - Derwent Speedwell
Photo: David Laurie



Thysanotus patersonii - Twining Fringe Lily
Photo: David Laurie

(Continued on page 8)

May Meeting Report continued...

(Continued from page 7)

species mostly found in Australia with a small number found outside Australia in Southeast Asia, New Guinea and the Torres Strait islands.

They range in size from small shrubs of 0.5m to large trees, some such as *Melaleuca cajuputi* can grow to 45m. Three other species mentioned were:

- *Melaleuca radula* – is from WA and looks similar to *Melaleuca fulgens*, grows to 1-3m x 1-3m and has a purple flower.
- *Melaleuca citrina* (Syn. *Callistemon citrinus*) is found in the Stirling Ranges and grows to a size of 1-3m x 1.5-4m. It is a hardy plant that has yellow flowers.
- *Melaleuca leptospermoides* grows to 1-2m x 0.8-2m.

To highlight the range of plants within Myrtaceae, *Actinodium cunninghamii* Swamp Daisy was also made mention of. *Melaleuca*, along with the rest of the Myrtaceae family are susceptible to Myrtle Rust, which, attacks new growth.

Discussing the specimens that had been brought in for the flower table was last on the evening's agenda, and plants from the Rutaceae family including a good number of *Correa* and 1 *Crowea* were in the majority. Among species in flower this month were:

- *Banksia marginata* Silver Banksia that were once widespread across our region and were mentioned in Hume & Hovell's records of their travels.
- *Correa alba x pulchella* (pink form)
- *Correa reflexa*
- *Correa* 'Little Cate' - a *C. pulchella* cultivar produced by Bywong Nursery.
- *Correa alba*
- *Correa* 'Sky Bells'
- *Correa glabra*
- *Correa* 'Catie Bec' – another cultivar from Bywong Nursery.
- *Crowea exalata*
- *Eremophila decipiens* – no day in Victoria gets too hot for this plant.
- *Grevillea rosmarinifolia* (green flowering form)



Melaleuca radula -

Photo: Gngangarra...commons.wikimedia.org

https://commons.wikimedia.org/wiki/File:Melaleuca_radula_01_gngangarra.jpg



Melaleuca citrina (Syn. *Callistemon citrinus*) -

Photo: Brian Walters

<http://anpsa.org.au/c-cit.html>



Melaleuca leptospermoides

Photo: Ian McMaster

<https://bie.ala.org.au/species/http://id.bio>



Actinodium cunninghamii

Photo: Alfred Guhl

<http://anpsa.org.au/a-cun.html>

Red Box - *Eucalyptus polyanthemos*

By Norbert Ryan

***Eucalyptus polyanthemos* or Red Box**

The scientific name for Red Box relates to the heavy flowering of this species, the literal meaning is "many flowers." While described as a small to medium sized tree from 8-25m, some very stout, tall old trees occur. The red description describes the colour of the wood, which, is a hard timber and is popular for fencing and firewood. As with other true Box-type Eucalypts, the trunk and large branches are covered with a persistent, grey, lightly scaly bark; juvenile leaves are alternately positioned on the stem, also consistent with Boxes. There are four subtypes of red box distinguished by leaf shape and the pattern of distribution of persistent bark. The common local form is widespread and also occurs closer to Melbourne around the Eltham/Diamond Creek area where it is often the dominant local species. The predominant identifying feature is grey-green ovate leaves; in the peak of drier months these leaves have an almost silvery appearance. Juvenile leaves are also ovate and are often of larger diameter than mature leaves and the stems can have a grey waxy sheen. Juvenile leaves can be used for staining wool for spinning, imparting a rich yellow colour. Buds occur in panicles of 7 and the cap has a smaller diameter than the body of the bud. Again there may be a glaucous, grey patina on the surface of the buds. The fruit is fine walled with a sunken disc with 3-5 valves. This species favours dry, stony foothills country and is often found with Long-leaved Box, Yellow Box, Red Stringy Bark and Candlebark species.

N.B. These notes are based on texts by Leon Costermans



Eucalyptus polyanthemos Red Box Fruits. The fruit is thin walled, has a sunken disc and from 3-5 valves (4 visible here). Photo: Norbert Ryan



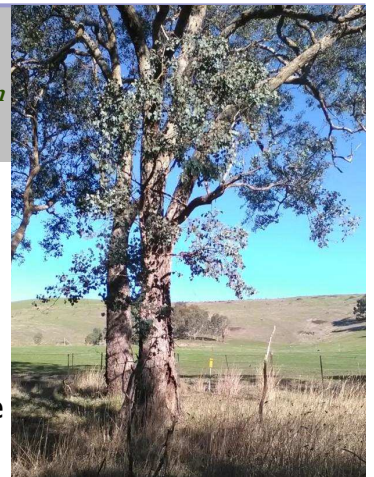
Eucalyptus polyanthemos Red Box buds. Very numerous, arranged in panicles of 7, cap of less diameter than shaft. Grey waxy appearance. Photo: Norbert Ryan



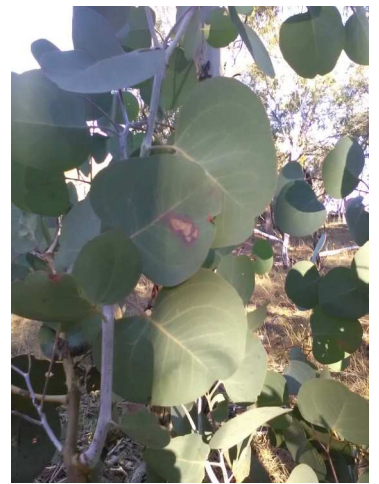
Eucalyptus polyanthemos Red Box trees line either side of roadside at Reedy Creek. Note distinctly grey, rounded foliage Photo: Norbert Ryan



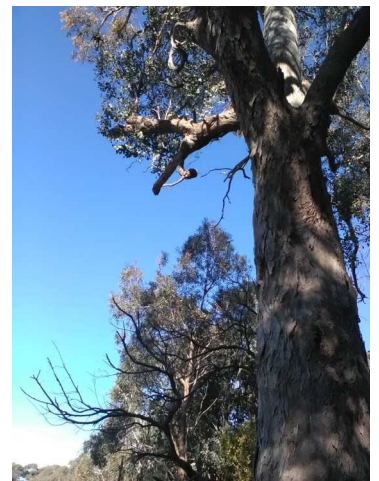
Eucalyptus polyanthemos Leaves & bark. This illustrates the fine scaly bark and the ovoid shape and grey colour of mature leaves Photo: Norbert Ryan



Eucalyptus polyanthemos Small Red Box trees. Note persistent fine scaly bark extending to all but small branches. Photo: Norbert Ryan



Eucalyptus polyanthemos Red Box Juvenile Leaves. The leaves are of large diameter positioned alternately, and along with the branches have a grey patina. Photo: Norbert Ryan



Eucalyptus polyanthemos Trees may reach large height and diameter. Photo: Norbert Ryan

APS Mitchell
Annual Spring Plant Expo & Sale
October 19th, 2019



9 am - 3 pm
Kilmore Memorial Hall
14 Sydney St, Kilmore

Native Plant, Flower, & Photographic Displays



Plant & Book Sales
Gardens for Wildlife



APS Victoria - Books

Goldfields Revegetation - Native plants

Joan & Peter Broughton, Ironstone Park - Unusual Native Plants

Neil's Native Plants (to be confirmed)

Russell Wait - Eremophila specialist (to be confirmed)

Valley of a 1000 Hills Nursery, David Laurie - Indigenous & native plants

Vaughan's Australian Plants (to be confirmed)

Please BYO bag, or basket as some of our sellers are now plastic bag free



Entry \$2.00 (Children free) - Door Prizes - Raffle

Volunteers will be needed to assist with: Donations of specimens for floral display (including nuts & seeds if available), Setting up on Friday October 18th (time to be advised), also on Saturday October 19th with Ticket Sales/Entry, Plant Sales, Catering (Tea & Coffee), Pack up & Clean up etc.

Members please remember to take pictures of native plants in bloom in your gardens for our photographic display. Photos can be submitted to Ian Julian at meetings or image files can be emailed - see below:

Enquiries & further information please contact Ian Julian: Ph 0438 270 248

Email: secretary@apsmitchell.org.au

Reminders, APS Victoria Diary Dates & Other Events

Thank you

- For the various contributions of articles, answering pesky questions, event information, photo's, feedback, proof-reading, researching & providing other information as needed and general support...

A BIG THANK YOU TO:
Dr Sophie Bickford,
Christine Cram,
Ian Julian,
David Laurie,
Barbara Mau,
Norbert Ryan.

APS VIC DIARY DATES...

June 15 - APS Geelong hosts Committee of Management meeting.

June 22-23 - APS Ballarat Winter Flower Show celebrating flowers grown locally in members gardens in winter. Robert Clark Centre, Ballarat Botanic Gardens. 10:30am-3:30pm

June 27-28 - Cranbourne Friends Winter Plant Sale. 10am - 4pm

September 14-15 - APS Yarra Yarra Australian Plants Expo. Eltham Community & Reception Centre, 801 Main Rd, Eltham. 10am - 4pm. Check the APS Yarra Yarra website for plant lists:
www.apsyarrayarra.org.au

September 21-22 - 50th Anniversary of Anglesea Wildflower Weekend and Art Show. Celebrating the area's remarkable biodiversity and wildflowers. Anglesea Memorial Hall, 3 McMillan St, Anglesea 10am - 4pm.

September - APS Vic Committee of Management meeting. (Host and date to be confirmed).

September 30 - October 4 - ANPSA 2019 Conference – *Blooming Biodiversity*. Hosted by Wildflower Society of Western Australian in Albany, WA. Pre- and post-conference tours between 21 September to 11 October. Key Speakers include Professor Stephen D Hopper

AC and Gregory John Keighery. Details:
www.bloomingbiodiversity.com.au.

October 5-6 - APS Grampians Group Pomonal Native Flower Show. Pomonal Hall. 9:30am-5pm on Saturday, 10am-4pm on Sunday.

October 12 - APS Echuca Moama Native Flower Showcase, Echuca Masonic Lodge Hall, 426 Hight St, Echuca. 9am-4pm. A huge flower display, plant sales, floral art, native bonsai, basket weaving and other displays and demonstrations.

Committee & Contact Information

AUSTRALIAN PLANTS SOCIETY, MITCHELL GROUP INC.

PO Box 541, Kilmore, Victoria, 3764

No. A0054306V

Email: mitchell@apsvic.org.au

Website: www.apsmitchell.org.au

Committee Members

President: Norbert Ryan 0428 180 651

Vice President: Dawn McCormack

Secretary: Ian Julian 0438 270 248

Email: secretary@apsmitchell.org.au

Treasurer/Memberships:

Christine Cram 0458 238 270

Committee: Bill Barker, Jeanine Petts, Victoria Morris.

Group Librarian: Volunteer position open

Plant Sales: Volunteer position open

Newsletter Editor: Jeanine Petts 0409 029 603

Gardens for Wildlife Co-Ordinator: Volunteer position open. Email: g4w@apsmitchell.org.au

Correa reflexa variety unknown



Photo: J Petts

Newsletter contributions:

Contributions should be sent to Jeanine Petts

Email: wattlegum@southernphone.com.au

Post: PO Box 381, Pyalong Vic 3521

For inclusion in the next Newsletter please forward contributions prior to the first Monday of each month.



AUSTRALIAN PLANTS SOCIETY MITCHELL GROUP INC.

Email: mitchell@apsvic.org.au

PO Box 541, Kilmore Victoria, 3764

Website: www.apsmitchell.org.au

Inc# A0054306V

2019/20 MEMBERSHIP/RENEWAL FORM – July 1 to June 30

This is a combined membership form for APS Vic and APS Mitchell

Please use this form instead of the form sent out with the APS Victoria newsletter

For insurance purposes people who join APS Mitchell must also join APS Victoria Inc.

(Please ☒ whichever applies) **Application** ☐ **OR** **Renewal** ☐

Title:	Mr / Mrs / Ms / Miss
Surname/s:	
Given name/s:	
Postal Address:	
Town/Suburb:	
Postcode:	
Telephone:	
Email Address:	

(Please ☒ whichever applies)

Membership Type:		Fees: Note: Membership Year = July 1—June 30		
		APS Victoria	APS Mitchell	Total
<input type="checkbox"/>	Single	\$35.00	\$10.00	\$45.00
<input type="checkbox"/>	Couple/Family (2 adults & 2 dependents)	\$40.00	\$12.00	\$52.00
<input type="checkbox"/>	Student	\$26.00	\$10.00	\$36.00
<input type="checkbox"/>	Organisation	\$44.00	\$10.00	\$54.00
<input type="checkbox"/>	I have paid/pay my APS Vic membership when joining/renewing with another district group. Which Group? : Include only applicable APS Mitchell Fee:		<input type="checkbox"/> Single \$10.00 <input type="checkbox"/> Family \$12.00 <input type="checkbox"/> Student \$10.00	
<input type="checkbox"/>	Optional Australian Plants Subscription	4 issues:		\$15.00
Total Due:				\$

I/We agree I agree to be bound by the Rules and Bylaws of the Society.

Signed:	Date: / /
----------------	----------------------

I agree to my name being included in a membership list circulated for members' private use: **Yes** ☐ **No** ☐

Payment by: (1) Bank Transfer to BSB 633-000 Account No. 159982271 (Bendigo Bank)

Please include your surname and post code as reference/transaction details

Or (2) Cheque made payable to: APS MITCHELL INC.

Posted to: APS Mitchell Treasurer, P O Box 541, Kilmore Vic 3764

Or (3) Pay via cash or cheque at an APS Mitchell monthly meeting (3rd Monday of the month 7:30pm John Taylor Room, Kilmore Library, Sydney St Kilmore)

Enquires: Christine Cram Ph: 0458 238 270 or email: mitchell@apsvic.org.au