

NEWSLETTER



AUSTRALIAN PLANTS SOCIETY MITCHELL GROUP INC.

Email: mitchell@apsvic.org.au

Website: www.apsmitchell.org.au

PO Box 541, Kilmore Victoria, 3764

Inc# A0054306V

May news...!

Hello and welcome to our May 2020, "in isolation" edition...

Hopefully this newsletter again finds all our readers in good health, and coping well with the current conditions.

At time of writing, our meetings and gatherings remain suspended until such time as we receive the all clear from government, and the Mitchell Shire Council reopens meeting rooms.

While we don't currently have meeting reports with which to fill our newsletter, I am very happy to be able to thank our very kind, generous and supportive members who have so far answered my call for photos and items of interest; This month I extend a huge thank you to: Victoria Morris, Janis Baker, Russell Wait, Paul Piko, Dawn McCormack (with IT help from Tim Wollington), & Norbert Ryan for providing much of the content for this issue & our reading pleasure.

Once again the content of our June issue will be up to the generosity of our members and



Hakea decurrens

Photo: J. Petts

friends, and I hope that your support with photos and other info can continue. Remember it doesn't need to be much, just a photo of something of interest, a species name if known, or other information if you would like to share.

The June newsletter will be due for issue on or within a few days of Monday June 8th. I'll be eagerly looking forward to hearing from our members and friends. So please, please send contributions in by Monday June 1st. Email to:

wattlegum@southernphone.com.au

Stay healthy, safe & happy in your gardens. Cheers until next time, Jeanine

Inside this issue:

General Meeting Information Pg 2

Membership Pg 2

Gardens for Wildlife Pg 2

Autumn garden snapshots... Pg 3

Local Gums in bud now... Pg 10

Reminders, APS Vic Diary Dates etc... Committee & Contact Information Pg 11

Local native plant nurseries open for business Pg 11

Pea Flower Study Group...

A study group has been reactivated to study plants with pea flowers and has been renamed Australian Pea Flower Study Group.

In the past, a study group for this purpose has operated under the name Fabaceae Study Group, as pea flowers were previously recognised as a separate family. If you are interested in the identification, classification, cultivation, propagation or conservation of Australia's pea flowers, consider joining the Australian Pea Flower Study Group.

The study group webpage can be found here:

<http://anpsa.org.au/pea-flowerSG/index.html>.

If you would like to join the group, there is a section on the webpage that can be completed and submitted online. Membership for emailed newsletters is free.

May
2020

Volume 7, Issue 4

Mitchell Diary Dates..

Due to the current COVID-19 (Coronavirus) situation, all group meetings, outings and gatherings continue to be suspended until further notice. Advice will be sent via email should conditions change before our next newsletter issue date.

The following dates remaining in the diary are subject to potential postponement or cancellation, being wholly dependent upon government health advice and instruction of the time:

- 1st Weekend in October - Garden Visit: The garden of Dawn McCormack Heathcote Junction. Date & details to be advised.
- Saturday October 17th, Spring Plant Expo & Sale Kilmore Memorial Hall, Sydney St Kilmore

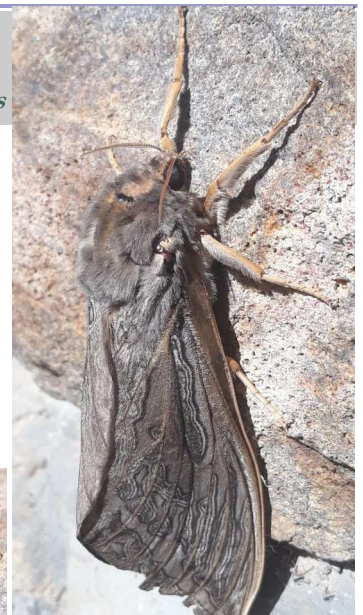


Gardens for Wildlife News...

By Jeanine Petts

Reading a book review in the March 2020 issue of APS Victoria's *Growing Australian* on "CATERPILLARS, MOTHS AND THEIR PLANTS of southern Australia", was a reminder of the importance of moths in the food chain, and therefore something to consider in our Gardens for Wildlife.

Moths and their larva provide a rich nutrition source for a range of creatures including other insects, spiders, bats, birds, lizards, possums and more. One very large moth commonly found in our region at this time of year is the Red Gum Ghost Moth *Abantiades marcidus*. Larvae feed on the roots of Eucalyptus species, and flight of the adult moths coincides with autumn rains. These moths have no feeding mouth parts, and hatch, fly, mate, disperse eggs, then die within a 1-2 day period (if they haven't already become a meal for something else).



Red Gum Ghost Moth ? Photos: J Petts

**MEETINGS ARE HELD ON THE
3rd MONDAY OF THE MONTH
(February to November)
unless otherwise advised**

**Commencing 7:30 pm in the
John Taylor Room, Kilmore
Library, Sydney Street,
Kilmore Vic 3764**

Entry \$2.00 Gold Coin

Guest Speaker

Door Prizes

Plant Sales

**Use of the APS Mitchell free
Library**

Supper & Chat

VISITORS VERY WELCOME

Members & Visitors are
encouraged to bring along
exhibits for our "Show & Tell"
Flower Specimen Table

Please label plants



Meetings remain suspended until further notice...

Owing to the current COVID-19 (Coronavirus) situation;

All meetings, outings and gatherings of APS Mitchell District Group continue to be suspended until further notice.

Further advice regarding APS Mitchell activities will be provided via monthly newsletters and/or email.

In the interim, keep busy in your gardens and around your homes, stay safe and healthy.

We'll be looking forward to seeing everyone hale & hearty in the future, hearing about how your plants have grown, gardens progressed, and any other projects you may have undertaken. We will plan to resume activities as soon as government health department advice and instruction declares conditions safe for social gatherings and acceptable to resume.



Callistemon 'Kings Park Special'
A solitary, sporadic autumn flower.
Photo: J Petts

Memberships...

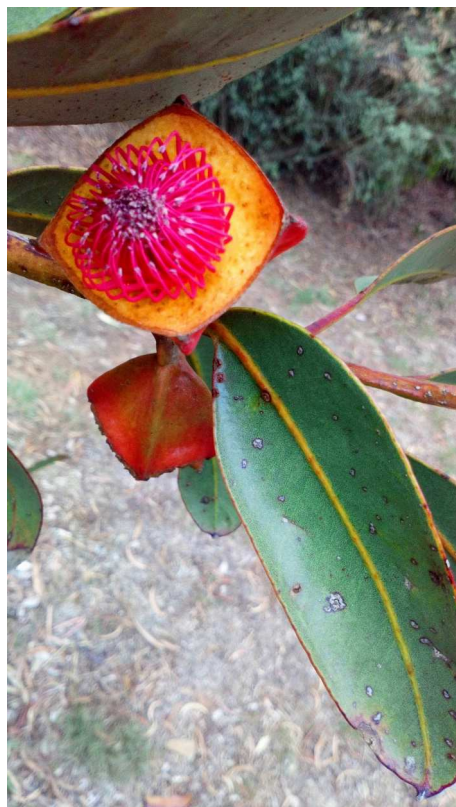
For all membership enquiries, information and forms and please contact Christine Cram: Phone: 5793 8270 or Email to the attention of the Membership Officer: aps.mitchell@gmail.com
Membership information, forms and contact information can also be found at our website: www.apsmitchell.org.au

Autumn garden snapshots ...

Photos from APS Mitchell members & friends...

For your viewing pleasure this month we have snapshots from members gardens during this Autumn...

First, from Victoria Morris, sharing "photos of a horticultural highlight" in the garden at Lancefield... "After 16 years of nurturing and coaxing, two scrappy *Eucalyptus tetraptera* have finally started to flower!!!! Yippee!"...



Eucalyptus tetraptera - Also known as Square-fruited Mallee or Four-winged Mallee.

Photos: Victoria Morris



From Russell Wait...

The photo of *Banksia speciosa* at left, along with the following information:

This specimen growing in the garden at Riddles Creek has been planted for about 5 years. It is growing in a loam clay soil but raised in a raised bed built up about 0.4m.

This is the second year it has flowered.

The species grows naturally along the coast near Esperance WA.

Banksia speciosa

Photo: Russell Wait

(Continued on page 4)

Autumn garden snapshots continued...

(Continued from page 3)

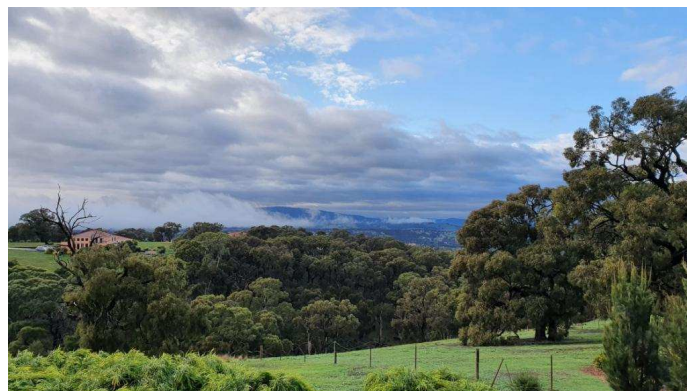
From Janis Baker; Views of the garden including a photo of a *Grevillea* standard that was purchased from Brian Weir and is currently in flower:



Above left & Above: Garden Views

Left: A *Grevillea* standard in flower

Photos: Janis Baker



Above: View across Hidden Valley

Below: *Banksia marginata* (low growing form) Photos: Paul Piko

Paul Piko shared a little information on his garden along with this next sequence of photos (please note his photos are copywritten & permission must be sought to reprint):

"In summary:

Not much of a garden when I moved in, now getting lots more wildlife.

Planted *Banksia marginata* (a few a varieties), *Banksia blechnifolia*, *Lomandra*, *Dianella*, *Goodenia*, *Westringia*, *Correas*, *Ozothamnus ferrugineus*, *Allocasuarina littoralis*, various ground covers."



(Continued on page 5)

Autumn garden snapshots continued...

(Continued from page 4)



Allocasuarina littoralis - Black Sheoke Left: Male flowers. Right: Female flowers.
Photos: Paul Piko

Banksia blechnifolia - Photo: Paul Piko



Ozothamnus ferrugineus - Tree Everlasting
Photo: Paul Piko

New Holland Honeyeater in *Banksia marginata* - Silver Banksia
Photos: Paul Piko

(Continued on page 6)

Autumn garden snapshots continued...

(Continued from page 5)



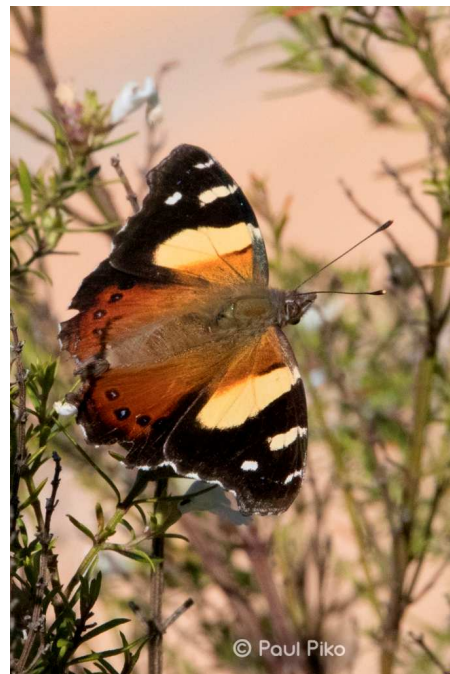
Grevillea 'Superb'

Photo: Paul Piko



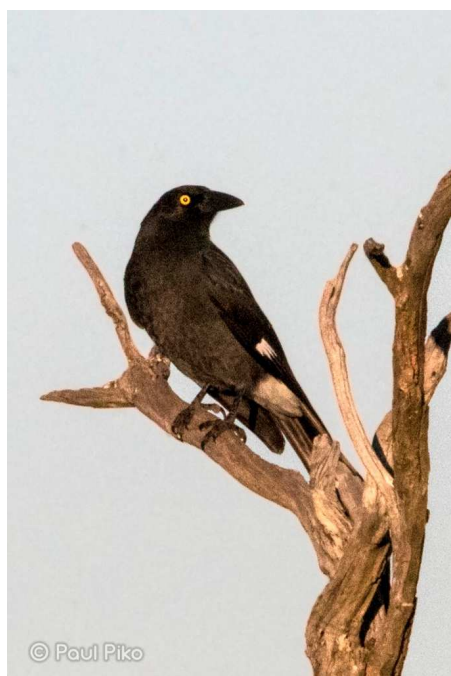
Blue Wren in *Grevillea*

Photo: Paul Piko



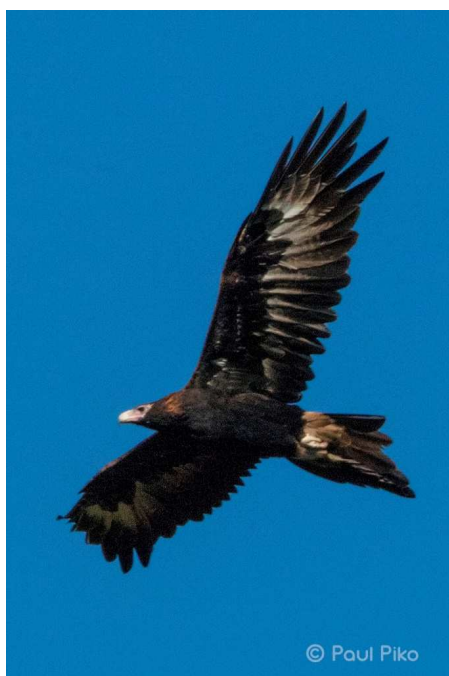
Yellow Admiral Butterfly

Photo: Paul Piko



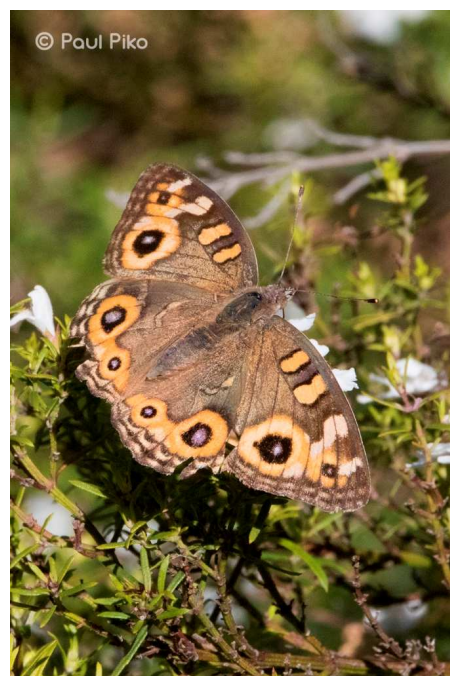
Pied Currawong

Photo: Paul Piko



Wedge-tailed Eagle in flight.

Photo: Paul Piko



Meadow Argus Butterfly

Photo: Paul Piko

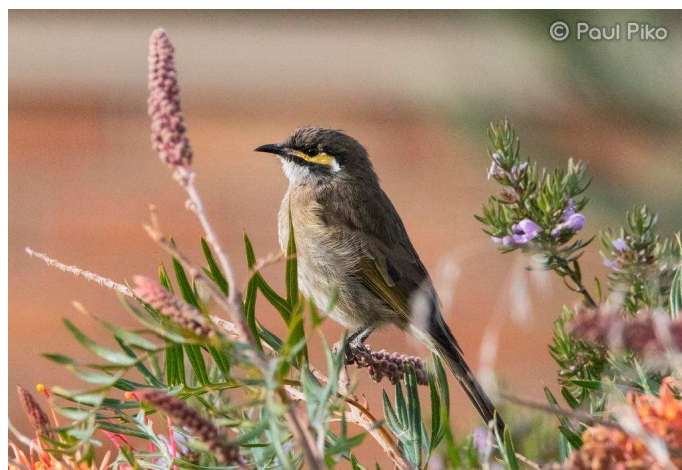
(Continued on page 7)

Autumn garden snapshots continued...

(Continued from page 6)



Blue Wren in *Banksia marginata* - Silver Banksia .
Photo: Paul Piko



Yellow-faced Honeyeater in a *Grevillea*

Photo: Paul Piko

Our last series of photos for the month come from Dawn McCormack. Dawn enlisted the help of her neighbour, who very kindly took the photos, and then emailed them in. Dawn has a magnificent garden, which, we will all be hoping to make a return visit to in October (pending the lifting of Covid-19 related travel & gathering restrictions). Plant tags have been thrown around by birds so species names are missing for most of the images. If anyone can confirm species names Dawn Would love to Know...



Correa 'Canberra Bells'
Photos: Tim Wollington



Standard *Grevillea rhyolitica*
Photos: Tim Wollington



(Continued on page 8)

Autumn garden snapshots continued...

(Continued from page 7)



Correa sp.
Photos: Tim Wollington



Grevillea sp.
Photos: Tim Wollington



Standard *Grevillea* Lemon 'Daze'
Photos: Tim Wollington



Grevillea sp.
Photos: Tim Wollington



(Continued on page 9)

Autumn garden snapshots continued...

(Continued from page 8)



Standard *Grevillea* sp.
Photos: Tim Wollington



Standard *Grevillea* sp.
Photos: Tim Wollington



Standard *Grevillea* sp.
Photos: Tim Wollington



Correa sp.
Photo: Tim Wollington

Local Gums in bud now...

By Norbert Ryan

One of the features that aid in the identification of Eucalypt species is the appearance of the buds. Following the wet Autumn, most of the local Eucalypts are carrying buds. It may take a search to find a branch carrying buds but a quick view of their structure can often help confirm the identity of the tree. This is in conjunction with other features such as bark type, colour and distribution, juvenile and adult leaf colour and form, and seed case or "fruit" features. It is interesting to see similar bud types together but be satisfied that the differences can be easily discerned e.g. at first Manna Gum and Candlebark seem very similar but the buds of the latter are virtually stalk-less.

These notes are drawn from the illustrations and descriptions of Costerman's "Trees of Victoria and Adjoining Areas".



Eucalyptus viminalis Manna Gum: usually in groups of three in a cross shape, with short stems, conical cap.



Eucalyptus rubida Candlebark: usually in groups of three, sessile, with a conical cap



Eucalyptus macrorhyncha Red Stringybark: each cluster contains 7-11 buds with pointy, curved, conical caps.



Eucalyptus radiata Narrow-leaved Peppermint: clustered groups of up to 10 club-shaped buds, very short caps.



Eucalyptus obliqua Messmate: clusters of 7-15 club-shaped buds, smooth cap with no obvious join at margin of cap.



Eucalyptus melliodora Yellow Box: clusters of up to 7 buds often located towards end of branches, conical caps are attached with no scar, appearance is club shaped.



Eucalyptus goniacalyx Long-leaved Box: buds are sessile and occur in groups of 7, two ridges on shaft of bud and clearly delineated bulky cap.



Eucalyptus ovata Swamp Gum: up to 7 per cluster, rigidly attached with conical cap, buds have diamond-like profile.



Eucalyptus camaldulensis Red Gum: usually 7 per cluster, very pointy cap, thin pedicels (stalks).



Eucalyptus goniacalyx Long-leaved Box: A fallen trunk provides a classic illustration of juvenile leaves at base and adult leaves along trunk

All photos in this article: Norbert Ryan

Reminders, APS Victoria Diary Dates & Other Events

Thank you

- For the various contributions of articles, answering pesky questions, event information, photos, feedback, proof-reading, researching & providing other information as needed and general support...

A BIG THANK YOU TO:

Barbara Mau,
Christine Cram,
Dawn McCormack,
David & Helen Laurie,
Ian Julian,
Janis Baker,
Norbert Ryan,
Paul Piko,
Peter & Joan Broughton,
Russell Wait,
Tim Wollington,
Victoria Morris.

APS VIC DIARY DATES...

In line with ongoing advice on COVID-19 (coronavirus), many APS-related events have been cancelled.

APS Victoria will endeavour to keep event status updated on the APS Victoria website:

<https://apsvic.org.au/events/>

Melton Bacchus Marsh May Plant Sale – CANCELLED
HAKEAS may be available for arranged pickup. If so, they will be advertised on the APS Melton Bacchus Marsh Facebook page:

<https://www.facebook.com/APS-Melton-and-Bacchus-Marsh-1134800709901500/?ref=bookmark>

October 3-4 - Pomonal Flower show. Saturday 9am - 5pm, Sunday 9am-4pm.

Special Guest Speaker: Jane Edmanson. For details visit:

<https://apsvic.org.au/event/aps-grampians-pomonal-flower-show-2020/>

October 24-25, 2020 - 13th FJC Rogers Seminar on 'Mint bushes & allied genera' -

Please note: Owing to the COVID-19 (Coronavirus) situation, registrations for the FJC Rogers Seminar are currently on hold until a decision is made at the end of May regarding whether this event will go ahead on time.

For further information contact:

Email: fjcrogers@apsvic.org.au
Phone:

Miriam 0409 600 644

Committee & Contact Information

AUSTRALIAN PLANTS SOCIETY, MITCHELL GROUP INC.

PO Box 541, Kilmore, Victoria, 3764

No. A0054306V

Email: mitchell@apsvic.org.au

Website: www.apsmitchell.org.au

Committee Members

President: Norbert Ryan 0428 180 651
Vice President: Dawn McCormack
Secretary: Ian Julian 0438 270 248
Email: secretary@apsmitchell.org.au
Treasurer/Memberships: Christine Cram 0458 238 270
Committee: Bill Barker, Dawn Barr, Jeanine Petts, Victoria Morris.
Group Librarian: Volunteer position open
Plant Sales: Volunteer position open
Newsletter Editor: Jeanine Petts 0409 029 603
Gardens for Wildlife Co-Ordinator: Volunteer position open. Email: g4w@apsmitchell.org.au

Newsletter contributions:

Contributions should be sent to Jeanine Petts
Email: wattlequm@southernphone.com.au

Post: PO Box 381, Pyalong Vic 3521

For inclusion in the next Newsletter please forward contributions prior to the first Monday of each month.

Local Nurseries still open for business ...

During this time of Covid-19 isolation, please remember & support our local native nurseries...

Valley of 1000 Hills Nursery (David & Helen Laurie)
Supplying indigenous tubes stocks.
150 Reid Rd, Reedy Creek.
Open Saturdays 10am to 5pm. Phone: 03 5784 9286

Ironstone Park (Peter & Joan Broughton)
Specialising in rare, unusual & hard to find native plants.
Lot 33 Paling Rd, Heathcote.
Open by appointment: The garden is looking fabulous with many unusual natives worth looking at. Call Pete on: 0419 878 950 if you would like an appointment or arrange to have plants dropped off.

Russell Wait - Eremophila specialist
Russell grows *Eremophila*, some standard *Grevillea*, and does occasionally have a small quantity of other species. Held in his garden is the Botanical Collection of Eremophila for Plant Trust that he has held for approximately 25 years.
11 Tranter Close, Riddells Creek.
Open by appointment: Visitors need to telephone first to arrange access. Mobile reception in the area is very poor, so the landline is the preferred & most reliable method of contact.
Telephone: 03 54287956 Mobile: 0428 388 211