

NEWSLETTER



AUSTRALIAN PLANTS SOCIETY MITCHELL GROUP INC.

Email: mitchell@apsvic.org.au

Website: www.apsmitchell.org.au

PO Box 541, Kilmore Victoria, 3764

Inc# A0054306V

April 2022

Volume 9, Issue 3

April news...!

Hello, Happy Easter & welcome to our April issue.

Beginning again with apologies—Firstly, my deep apologies for this issue being late, unanticipated events conspired this past week to limit my available time. Which, also contributed to such short notice on last minute meeting changes.

Unfortunately, the committee only realized at the 11th hour, that our April meeting fell on the Easter Monday public holiday. As such, a decision has been taken to reschedule our planned guest speaker to another time, in order to make sure our speaker has a the best opportunity for a good sized audience.

For those who would like to attend a gathering this Monday, Christine and Ian have very kindly offered to host an afternoon garden visit in Sugarloaf Creek, in place of our evening meeting. See right and page 2 for details.

Our next newsletter will be due for issue on or within a few days of Monday May 9th. Contributions big & small remain very greatly



Eucalyptus leucosylon
var.
macrocarpa
First flowers
a 3-year-old
tree.
11.04.22
Photo:
J Petts

appreciated & always needed. If you can help out with items of interest please send them in by May 2nd. Email to: wattlegum@southernphone.com.au

Again, heartfelt thanks to everyone who supports our group, & this newsletter. Your assistance is invaluable. The generosity & support of our members, friends & guest speakers is what makes the content of our newsletters possible.

In deep appreciation, much thanks for your patience & cheers until next time,
Jeanine

Inside this issue:

Gardens for Wildlife news Pg 2

*April Meeting - Note
change of time and Venue:
Garden Visit to Sugarloaf
Creek, 2pm Monday April
18th* Pg 2

Membership Pg 2

*March meeting Report -
Fabaceae - Pea flowers* Pg 3

*Growing at Ironstone Park
part 2* Pg 12

*Reminders, APS Vic Diary
Dates etc....* Pg 13

*Committee & Contact
Information* Pg 13

*Local native plant
nurseries* Pg 13

Veronica arenaria

From Qld & NSW.

Forms a multi-stemmed shrub spreading to 1.5m.

Grows in full sun to part shade and flowers from Sept to May.

Photo:
J Petts
8.04.2022



Mitchell Diary Dates..

- In line with ongoing Covid-19 advice, restrictions may apply or affect APS related events. If in doubt, please [contact us](#) (see contacts list on page 13).

Please note: Meetings will be held under the requirements of our [Covid Safe facility Plan](#); [Please read the plan \(from page 15\) prior to attending](#)

- PLEASE NOTE
APRIL MEETING
CHANGE OF
ACTIVITY, TIME, &
VENUE:
**Monday April 18th
GARDEN VISIT
SOCIAL 2:00pm**
To the garden of
Christine Cram &
Ian Julian at 395
Cameron's Creek
Rd, Sugarloaf
Creek. RSVP to
Ian: 0438 270 248

- Monday May 16th
Evening Meeting
7:30pm Guest
Speaker: To be
confirmed
- SAVE THE DATE!
APS Mitchell Spring
Expo & Plant Sale:
Saturday October
15th, 2022. 9am-
3pm.



Gardens for Wildlife news...

By Gerry Wun Ho

As commenced last month, here is the next of our featured indigenous species that's both beneficial to our wildlife and readily available from nurseries or local growers. In the spotlight this month is:

***Kennedia prostrata* Running Postman**

Characteristics and cultivation:

Belongs to the Fabaceae (pea) family and forms a prostrate, sprawling that spreads to 2m. Making an ornamental groundcover with striking scarlet flowers that occur in spring and summer.

It is adaptable to various soil types, as long as it is free draining. Grows in full sun to partial shade, and tolerates light frost and dry soil once established. Ideal for a rockery or sloping site, or even in a hanging basket

Provides nectar for native butterflies, and food source for caterpillars

Propagation: By seed — heat followed by smoke treatment promotes germination



Kennedia prostrata Photo: J Petts

**MEETINGS ARE HELD ON THE
3rd MONDAY OF THE MONTH
(February to November)
unless otherwise advised**

**Commencing 7:30 pm in the
John Taylor Room, Kilmore
Library, Sydney Street,
Kilmore Vic 3764**

Entry \$2.00 Gold Coin

Guest Speaker

Door Prizes

Plant Sales

**Use of the APS Mitchell free
Library**

Supper & Chat

VISITORS VERY WELCOME

Members & Visitors are
encouraged to bring along
exhibits for our "Show & Tell"
Flower Specimen Table

Please label plants



April Garden Visit—Monday 18th 2:00pm

As our regular 3rd Monday of the month meeting time has coincided with this year's Easter Monday public holiday, the committee, with respect, and in fairness to our guest speaker, have taken the decision to reschedule our evening meeting and guest speaker presentation to another date.

In place of an evening meeting Christine and Ian have kindly offered to host an afternoon garden visit at their home in Sugarloaf Creek. This will be an informal, relaxed afternoon, wandering the garden and enjoying each other's company:

When: Monday April 18th

Commencing 2pm

Where: 395 Camerons Creek Road, Sugarloaf Creek.

For further details & RSVP please contact Ian: Ph 0438 270 248

Visitors, guests & friends are always welcome at APS Mitchell events.



Hakea petiolaris Photo: Ian Julian

Memberships...

Our membership numbers have grown, however, due to "IT issues" we are unable to access details at this time. Rest assured, a proper welcome shall be forthcoming to our newest members. In the meantime, if anyone is yet to renew, wishes to join or check your membership status please contact Christine: Phone 0458 238 270 or Email to the attention of the Membership Officer: mitchell@apsvic.org.au A membership form is on page 15 of this newsletter. Further information, contact details, along with a downloadable [membership form](#) can also be found at our website: <http://www.apsmitchell.org.au/membership/>

March meeting report - Fabaceae - Pea-flowers...

By Jeanine Petts

Our March meeting saw multiple new and prospective members arrive for the meeting, which, was absolutely wonderful to see - Owing to and with much thanks to the work of Norbert, Gerry, Victoria and company at recent Gardens for Wildlife stalls, held at the Wallan and Lancefield markets. We'll look forward to seeing and getting to know our new comers better in the future. We were also a couple of key committee members down for the evening, so if things seemed a bit confused and chaotic at times, please accept my apologies. When this newsletter editor juggles multiple roles, a few balls very regularly go awry. I'll endeavour to be a bit more organised in the future. I extend a huge thank you to everyone who chipped in and helped out on the evening, your support and assistance was, and is, very much appreciated. Without you it would have been total chaos!!!

Once we were all moderately organised, having scored at least a cuppa along with quick chat here and there, and perhaps a bit of a peruse at the plants Mike Williams and Russell Wait had brought along for sale, Norbert called us to our seats to get proceedings underway.

Norbert began by welcoming our new and prospective members, guests and visitors. Then, in handing the floor to our guest speaker, introduced Mike Williams, who is very well known to most of us, as; a multi-skilled, mover and shaker among the APS Victoria and district group community. Pointing out that Mike was the key facilitator and mentor in starting our Mitchell district group and has recently been involved in getting the very new Heathcote district group up and running. He went on to mention that the last spring was a gorgeous season for local pea-flowers - Noting we had excellent displays around the countryside last year, including a number of species known to be in the district, which, though usually rarely seen, were discovered out in flower at numerous locations during this last season.

Mike began the presentation by advising he is not a technical man, just has a love for our Pea-flowers, as they provide a number of advantages as garden plants; being nitrogen fixers, with many species giving massed, bright colour in the garden when in bloom.

The Family Fabaceae is a large one, with endemic species found throughout all states. In total, Australia has 1100 species, across 135 different Genera. Some of these genera include: *Aotus*, *Bossiaea*, *Chorizema*, *Crotalaria*, *Daviesia*, *Dillwynia*, *Eutaxia*, *Gastrolobium*, *Glycine*, *Gompholobium*, *Goodia*, *Hardenbergia*, *Hovea*, *Indigofera*, *Jacksonia*, *Kennedia*, *Mirbelia*, *Oxylobium*, *Pultenaea*, *Sphaerolobium*, *Swainsona*, *Templetonia*, and *Urodon*.

The first slide shown was of *Bossiaea aquifolium*, which, was used as an example to show the typical identifying characteristic structures of a pea flower. Pea flowers generally consist of five irregularly shaped petals. These being:

The standard – the upper & usually largest petal

Wings – two smaller petals

The Keel – two lower petals fused at their top that form a “keel” enclosing the stamens.

In some pea species petal shapes are further modified than those of the typical flower forms described above. One of these is *Crotalaria cunninghamii* commonly known as the Bird Pea. *Swainsona formosa* is another species with a distinctively different flower shape. Pea flowers in general can have quite a diverse range of flower shapes and colours.

Among our local pea flowers are species in the following genera: *Bossiaea*, *Cullen* Scurf-peas, *Daviesia* Bitter-peas, *Desmodium* Tick-trefoil, *Dillwynia* Parrot-peas, *Eutaxia*, *Glycine*, *Gompholobium* Wedge-peas, *Goodia* Golden-tip or Clover-peas, *Hardenbergia* Coral-pea or Native Sarsaparilla, *Hovea*, *Indigofera*, *Kennedia*, *Lotus* Trefoil, *Podolobium*, *Platylobium* Flat-peas, *Pultenaea* Bush-peas, and *Viminaria* Native Broom. Pea species can be found thriving in a wide, diverse range of habitats



Bossiaea aquifolium Photo: Mike Williams

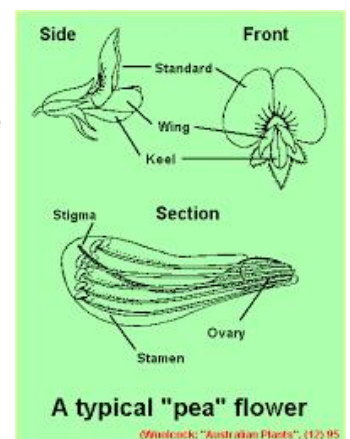


Image: <http://anpsa.org.au/>



Crotalaria cunninghamii
Photo: Mike Williams

(Continued on page 4)

March meeting report - Fabaceae - Pea-flowers...

(Continued from page 3)

and soil types, of which, basalt clay plains and granite country were two mentioned. Mike also reminded us that it is best to use the botanical name for each species as common names can easily lead to confusion, owing to the fact that many plants can have multiple common names, and sometimes the same common name is used for more than one different species.

An additional factor to note about the Pea family, is that there are species, which, are known to contain poisons. Some of note are:

Crotalaria are known to cause Walkabout disease, a condition that can be fatal to cattle and horses.

Gastrolobium are the source of the poison named 1080. James Drummond was a Botanist who arrived in colonial WA during the 1820's and was one of the first to suggest local plant species were responsible for mysterious cattle deaths of the time. Initially, he wasn't believed, however, his suspicions were eventually proved correct.

Indigofera contain Indospicine, which, is a toxin that canines are particularly sensitive to. It made the news mid last year in connection with 14 dog deaths across Victoria occurring at Bairnsdale, Traralgon, and Frankston.

Isotropis species are known to contain toxins poisonous to lambs. *I. drummondii* bears the common name Lamb Poison, *I. juncea* Slender Lamb Poison, and *I. atropurpurea* is known as Poison Sage.

Swainsona are another genera with a history of toxicity and livestock deaths. In 2014, fires in the Warrumbungle area of NSW, triggered mass flowering of Darling Pea *Swainsona galegifolia*, which, led to the death of more than 800 sheep on one property. When sheep eat Darling Pea, toxins in it trigger an addiction. The sheep then feed exclusively on Darling Pea, and the toxin adversely affects an enzyme in sheep's brains, leading to metabolism and liver damage.

Moving on from more general information, Mike began to take us through slides and a little specific information on a number of individual species, these were:

Aotus ericoides Common Aotus, is a widespread species found in Qld, NSW, Vic, Tas, SA, and WA, that is showy in flower, forming a variable shrub growing from 0.5-1.5m x 0.5-1.5m. Mike advised he has his specimen growing in a pot.

Bossiaea cordigera is found in both Tas and Vic - where it is listed as rare. It has a prostrate habit, growing to a spread of 1-2m, usually bearing yellow flowers, and has large seed pods.

Bossiaea prostrata is a species found locally in Mitchell Shire that forms a delicate scrambling plant, which, can be easily overlooked when not in flower.

Bossiaea riparia River Leafless Bossiaea, is found in NSW, Vic and Tas. It spreads via stolons and can be variable in form; either upright or decumbent, growing to 0.5-1m x 0.5-1m.

Before continuing on to the next species, Mike mentioned that some Pea-flower species can be hard to propagate. These species have been found to have a relationship with mycorrhizal fungi in the soil, which, are necessary for successful germination. A guest speaker will be presenting on the topic at the next [FJC Rogers Seminar](#) coming up on October 15th and 16th this year. (See page 14 for further information)

Bossiaea walkeri is found in NSW, Vic, SA and WA. During a 2019 road trip to WA, Mike found this species growing near Belladonia, which, is a small roadhouse community



Swainsona formosa Photo: Mike Williams



Aotus ericoides Photo: Mike Williams



Bossiaea cordigera Photo: Mike Williams



Bossiaea prostrata Photo: J Petts



Bossiaea riparia Photo: Mike Williams

(Continued on page 5)

March meeting report - Fabaceae - Pea-flowers...

(Continued from page 4)

on the Nullarbor Plain around 280km short of Norseman. At a distance the shrub looked as if dry and dead. However, close inspection revealed a 3m x 3m shrub that was alive, well, and in full flower.

Chorizema diversifolium is a twining plant endemic to WA that grows 1-2m and is found in the Karri Forests south of Perth.

Chorizema varium is another species of this colourful genera. Endemic to WA, it reaches 0.2-0.3m x 0.5-1m and is a good, easy to grow, understorey plant that is quite hardy.

Crotalaria eremaea grows to 0.2-1m x 0.5-1.5m and is found in Qld, NSW, SA, WA and NT. Mike advised there are specimens growing at the Arid Lands Botanic Garden in Port Augusta. The gardens are a must visit stop when in the region.

Daviesia divaricata is another WA species. It grows to 1-2m x 1-2m, and bears tiny flowers in a mass display.

Daviesia mimosoides is found in Qld, NSW, Vic, SA and forms a lush green plant, which, flowers in spring and grows to 1-2.5m x 1-2m.

Daviesia pachyphylla from WA is also referred to as the "Ouch Bush", with good reason, as its succulent leaves terminate in a sharp thorny point. It grows to 0.6-1.5m x 1-2m.

There are quite a number of sharp-leaved, prickly Pea-plants. This adaptation has developed as a further response against grazing, owing to Kangaroos evolving a resistance to pea plant toxins.

A local Pea plant that isn't prickly is *Dillwynia cinerascens*. It is also found in Tas, SA and WA and is a nice, showy plant in flower that grows to 0.6-2m x 0.5-1.5m.

Dillwynia juniperina is a local plant that is prickly and grows to 1-3m x 1-2m. It is also found in NSW and Qld. Mike prunes his specimen, carefully.

Eutaxia epacridoides is from WA and grows to 0.5-1.5m x 0.5-1. It is easy propagate and is very hardy, making it a great plant for the garden.

Eutaxia microphylla is a widespread species found Qld, NSW, Tas, SA, WA and Vic, including locally. It tolerates both frost and dry conditions and forms a low growing prostrate plant of 0.5m x 0.5-1.5m. An upright variety; *Eutaxia microphylla* var. *diffusa* can grow to around 1.5m high.



Bossiaea walkeri



Chorizema diversifolium



Chorizema varium



Crotalaria eremaea



Daviesia divaricata



Daviesia mimosoides



Daviesia pachyphylla



Dillwynia cinerascens

Photo: Visual Sensations



Dillwynia juniperina



Eutaxia epacridoides



Eutaxia microphylla

(Continued on page 6)

Photos this page: Mike Williams, unless otherwise credited to [Visual Sensations Photography & Designs](#) (Mike Williams' daughter).

March meeting report - Fabaceae - Pea-flowers...

(Continued from page 5)

Eutaxia myrtifolia is endemic to WA and was previously known as *Eutaxia obovata*. It will grow to 1-2.5m x 1.5-3m.

Gastrolobium celsianum is a much under-rated plant endemic to WA, and was previously known as *Brachysema lanceolatum*. It grows to 0.5-2m x 1-3m and has contrasting foliage with a dark green upper surface and grey underside. A very useful plant in the garden.

Gastrolobium sericeum is a WA species with flower colour forms of cream, red, or black. It is the only black flowered plant among native peas.

Gastrolobium parvifolium is endemic to WA, grows to 0.4-1m x 0.5-1m, and bears orange/red flowers.

Gompholobium huegelii is a stunning little plant endemic to all eastern states; Qld, NSW, Vic, and Tas. It is found locally, grows to 0.3-1m x 0.3-1m, and bears bright yellow flowers reaching 1.5-2cm in size.

Gompholobium are a wonderful genera, however, most WA species are hard to grow in cultivation.

Gompholobium scabrum is a beautiful species endemic to WA that has eye catching pink flowers and grows to 0.4-2.3m x 0.5-1.5m. It was previously classified in the genera *Burtonia* until a modern taxonomic revision incorporated *Burtonia* into *Gompholobium*.

Hovea acanthoclada is a prickly WA species that bears purple flowers and is difficult to propagate. Unfortunately, Mike lost his garden specimen this season.

Hovea longifolia is endemic to NSW and grows to 1.5-2.5m x 1.5-2m. In Mike's garden, it self-seeds, coming up beside the driveway.

Indigofera australis is found in all States (including locally) and is a showy plant in flower that grows to 1.5-3m x 1-3m. It's useful as a screening plant and Mike has it planted with *Acacia pentadenia*.

Jacksonia scoparia Native Broom, is endemic to Qld and NSW. It is very floriferous, producing sprays of yellow flowers and has interesting fine foliage.

Kennedia becxiana is a vigorous climbing plant endemic to WA. The specimen in Mike's garden self-seeded – a new young plant came up after the original had died.



Eutaxia myrtifolia



Gastrolobium celsianum



Gastrolobium sericeum black form



Gastrolobium parvifolium



Gompholobium huegelii



Gompholobium scabrum



Hovea acanthoclada



Hovea longifolia



Indigofera australis



Jacksonia scoparia



Kennedia becxiana Photo: Visual Sensations

Photos this page: Mike Williams, unless otherwise credited to [Visual Sensations Photography & Design](#) (Mike Williams' daughter).

(Continued on page 7)

March meeting report - Fabaceae - Pea-flowers...

(Continued from page 6)

Kennedia microphylla has a prostrate habit, growing to a spread of 1-1.5m. It is endemic to WA and is frost sensitive so needs to be kept under shelter in our colder climates.



Kennedia microphylla



Kennedia prostrata

Kennedia prostrata Running Postman is another widespread species we find growing locally. In addition to Victoria, it is also found in NSW, Tas, SA, and WA. It is a prostrate creeper growing to a spread of 1-4m. This season has seen prolific seed produced, so Mike has sown fresh seed. Although he suspects it may have a dormancy period and may take time to germinate.



Kennedia retrorsa



Mirbelia oxylobioides

Kennedia retrorsa is another species with a climbing/trailing habit. It is endemic to NSW and at one point was thought to be extinct. When a herbarium specimen was found to have seeds, some were taken and used for propagation. In one of life's typical ironies, following successful germination of the herbarium seeds, living plants were discovered in the wild. The species is noted for its dinner plate sized leaves, lipstick pink flowers, and vigorous growth. Mike has it happily growing to cover a hay rake.



Platylobium obtusangulum Photo: [Visual Sensations](#)



Pultenaea blakelyi

Mirbelia oxylobioides is endemic to NSW, Vic and is found locally. It can grow to quite a large bush ranging from 1-2.5m x 1-3m. Mike finds it responds well to pruning.

Platylobium obtusangulum can be trailing in its habit or form an erect shrub reaching 0.6-1m x 0.6-1.8m. Members of this genera are referred to as Flat-peas and are noted for their unusual leaf shapes that make very worthwhile plants for the garden. This species is endemic to Vic, Tas, and SA.



Pultenaea gunnii

Pultenaea blakelyi is a NSW species that grows to 1.5-4m x 1-2.5m, and lights the bushland up with yellow when in flower.

Pultenaea gunnii is a local species that grows to 0.5-2.2m x 0.5-1.5m and is found across Vic and Tas.

Pultenaea scabra Rough Bush-pea (no slide was shown) is another of our local species. It grows 1-2m x 0.5-1.5m forming an erect to rounded shrub. Leaves are wedge-shaped and notched at the tip. Orange-yellow flowers held in terminal clusters cover the bush when in flower. Prefers a shaded to semi-shaded site in moist well-drained soil. Does not tolerate dry soil.

Pultenaea pedunculata, is another local species, most often seen roadside spreading over embankments. It is a prostrate plant that can attain a spread of 3m. Along with Vic, is endemic to SA, NSW, and Tas.



Pultenaea scabra
Photo: J Petts



Pultenaea pedunculata
(Continued on page 8)

Photos this page: Mike Williams
unless otherwise credited.

March meeting report - Fabaceae - Pea-flowers...

(Continued from page 7)

Pultenaea polifolia is found in NSW and north east Vic. It is listed as rare, and is variable in habit, forming either an upright or semi-prostrate shrub growing from 0.2-0.6m x 0.3-1m.

Sphaerolobium drummondii is a WA species that Mike spotted and photographed at Jurien Bay. They tend to be leafless, growing to 0.3-0.8m x 0.3-0.6m, and are stunning in flower.

Templetonia retusa is a species that Mike recommends everyone should have in their garden. As it is extremely showy in flower and blooms from late autumn through winter. Endemic to SA and WA, it forms a variable size shrub depending on situation, ranging in size from 0.5-6m x 1-3.5m.

Templetonia stenophylla is also known as Leafy Templetonia. Endemic to Qld, NSW, Vic and SA, it has prostrate habit, growing to a spread of 0.8m. On showing the photo of his garden specimen, Mike commented that his seems to have forgotten it's meant to be leafy.

Swainsona canescens grows to 0.3-1m x 0.5-1m and is endemic to SA, WA, and NT.

Swainsona formosa is an iconic and stunning plant when in flower. A second image shown was taken at the Arid Lands Botanic Gardens in Port Augusta SA. Throughout the Pilbara they grow and bloom in swathes as far as the eye can see.

Swainsona procumbens Broughton Pea, grows to 0.3-0.6m x 0.3-1m and is endemic Qld, NSW, Vic, SA. One of the places it can be found in Victoria is Terrick Terrick National Park (65km north of Bendigo).

Urodon dasyphyllus is a species endemic to WA that grows to 0.5-1m x 0.6-1.2m, and has an interesting habit and form, with flowers arranged in a whorl at the top of stems, which, are covered in soft grey/green hairy leaves.

Mike's presentation came to a close with the last slide shown being a photo taken in his front garden. Starting from left to right; the purple flowered plant on the left is *Kunzea jucunda*, *Bossiaea riparia* (yellow flowered at right front), *Chorizema cordatum* (orange/pink flowers at middle), *Hakea purpurea* at back right.

A brief Q and A followed, with Mike answering the question of How big is your garden? The reply: Just an average block standard width and about 150ft long. In which, he manages to fit approximately 250 different native species. With regard to

(Continued on page 9)



Bossiaea walkeri



Sphaerolobium



Templetonia retusa



Templetonia stenophylla



Swainsona canescens



Swainsona formosa at ALBG



Swainsona procumbens



Urodon dasyphyllus



Mike's garden. (species names in paragraph at left)

Photos this page: Mike Williams

March meeting report - Fabaceae - Pea-flowers...

(Continued from page 8)

propagating the desert pea species; Russell Wait mentioned that he has had success with 'nicking' the seed coat instead of hot water treatment (a good description of seed pre-treatments for propagating can be found in the following QLD Land for Wildlife notes link: https://www.lfwseq.org.au/wp-content/uploads/2016/11/LFW-Note-2016_V5.pdf).

Our evening plant raffle came next on the agenda, with the prizes on offer being:

Eutaxia epacridioides (previously mentioned pg. 5)

Dillwynia cinerascens (previously mentioned pg. 5)

Eremophila youngii subsp. *youngii* (grafted) Young's Emu Bush - Red flowering form. A WA species found in loam or clay soils that periodically flood, and grows to a shrub 1-4m tall x 2-3m wide. There is also a yellow colour form. Primarily spring flowering, it will flower at other times following new growth. Prefers full sun, will tolerate some shade and most frosts.

Gastrolobium celsianum (previously mentioned pg. 6)

The lucky winners were; Mahra and Danielle (two new/potential members), with Gerry & yours truly rounding out the four who scored the opportunity to choose and take home a great native plant.

Last of evening's proceedings came the flower table. A good range of specimens had been brought in, and Mike Williams was kind enough to guide the discussion on each species. Among the plants displayed were:

Eremophila weldii, a hardy little plant with small purple/blue flowers. It is so floriferous that its small flower size is more that made up for with the massed display of colour.

Eremophila 'Stirling Silver' is a natural hybrid between *E. longifolia* x *E. scoparia*, which, has pink flowers, with contrasting grey foliage and will grow to a shrub of up to 5m high x 4m wide.

Acacia fauntleroyi, which, Mike Williams described as a "ripper species". It is endemic to south-western WA and forms a shrub to small tree that may reach from around 2-7m high. It bears oval shaped flower heads, with silvery to grey-green foliage and features highly attractive minni-ritchi type bark.

Correa alba bears white flowers with rounded grey-green leaves. It is a very hardy, adaptable species that is frequently used in local council plantings and can be variable in size. Coastal forms can be low growing, and depending on site conditions some specimens have reached in the region of 2m. They do respond very well to pruning.

Correa 'Redex' is one of many *Correa* hybrid/cultivars. It has pink/red flowers with yellow tips. There are only 13 individual



Eremophila youngii

Photo: Brian Walters http://anpsa.org.au/plant_profiles/eremophila-youngii/



Eremophila weldii

Photo: J Petts

Acacia fauntleroyi Image: https://en.wikipedia.org/wiki/Acacia_fauntleroyi#/media/File:Acacia_fauntleroyi.jpg



Correa 'Redex' Image: <https://www.flowerpower.com.au/correa-redex-9336922002220>



Correa alba

Photo: J Petts

(Continued on page 10)

March meeting report - Fabaceae - Pea-flowers...

(Continued from page 9)

species within genus *Correa*, however, hybrids (both natural and cultivated) along with other named varieties, bring the total to around 150 different named species/varieties/cultivars.

Correa lawrenceana Mountain Correa or Tree Correa, is the largest growing Correa, reaching 1-5-2.4m wide x 3-8m tall. It can be variable in habit forming an open shrub to small tree. The species has been divided into seven varieties with four occurring in Victoria. Depending on variety, flower colour may be cream, green or a deep red, and bloom during autumn to spring.

Grevillea 'Lady O' - is one of a number of *G. victoriae* x *G. rhyolitica* named hybrid/cultivars. They are all very hardy, and flower reliably for very many months of the year.

Pycnosorus chrysanthus Golden Billy Buttons, is a locally occurring tufted annual herb with olive green leaves that have a white, woolly underside. Bright Yellow, globular flowerheads are held on stems above the foliage from Winter to Summer.

Callistemon sp. 'Injune' - can grow to a large shrub or small tree and is endemic to a small region near Injune in QLD. Pink flowers occur in spring, and sometimes a second flush in Autumn.

Banksia marginata Silver Banksia is a local/regional species, once widespread, though now largely cleared from the landscape. Recent years have seen regional Catchment Management Authority projects undertaken to restore populations of the species. Silver Banksia can grow to be large trees or shrubs and are an important habitat and food source; providing shelter, nectar and seed cones for a variety of native birds, small mammals and insects.

Banksia integrifolia Coastal Banksia, forms a small to medium tree growing to 15m. Endemic to NSW, QLD and Vic, it is quite hardy, tolerating salt spray, frost and will grow in most well-drained soils. Yellow flower spikes up to 14cm tall occur off and on through the year.

Solanum sp. Kangaroo Apple, likely either *S. laciniatum* or *S. aviculare*. The specimen brought in held only fruit making it challenging to give a definitive ID. A Key differentiating feature between the two species is that flowers of *S. aviculare* have quite deeply cut lobes, while *S. laciniatum* has flowers with much shallower lobes that are notched at the petal tips, so appear "frilled".



Correa lawrenceana var. *genoensis*

Photo: John Eichler
vicflora.rgbg.vic.gov.au
[CC BY-NC-SA 4.0](#)



Grevillea 'Lady O'

Photo: Jeff Howes <https://resources.austplants.com.au/plant/grevillea-lady-o/>



Pycnosorus chrysanthus

Photo: Ilma Dunn
vicflora.rgbg.vic.gov.au
[CC BY-NC-SA 4.0](#)



Callistemon sp. 'Injune'

Photo: J Petts



Banksia marginata Photo: J Petts



Banksia integrifolia Photo: J Petts



Solanum aviculare Kangaroo Apple

Photo: Daniel Ohlsen
vicflora.rgbg.vic.gov.au
[CC BY-NC-SA 4.0](#)



Solanum laciniatum

Large Kangaroo-apple
Photo: Ian Clarke
vicflora.rgbg.vic.gov.au
[CC BY-NC-SA 4.0](#)

(Continued on page 11)

March meeting report - Fabaceae - Pea-flowers...

(Continued from page 10)

Prostanthera cryptandroides forms a small shrub that grows to around 1m, which, flowers during the warmer months of the year. It is endemic to NSW and QLD, usually in rocky areas of dry Eucalypt woodland.

Grevillea 'Old Gold' is a cultivar developed by Austraflora Nursery in the early 1980's. Believed to be a hybrid between *G. ilicifolia* and the prostrate yellow form of *G. juniperina*. It forms a compact shrub of 0.3m-0.6 high x 1m wide, and tolerates heavy frost. Flowers are greyed yellow with pink styles which fade to apricot, occurring prolifically from mid-winter to mid-spring with an additional flush summer-autumn.

Callistemon subulatus, is a red flowered species, which, Norbert brought in and needed time to follow up on the species information. It is sometimes called Dwarf Brogo Overflow, and is a beautiful little bush with narrow, short, dry looking leaves. (Many thanks to Norbert for providing details and photos via email after the meeting.)

Crowea exalata is a small shrub of the Rutaceae family that bears pink or sometimes white star-shaped flowers that occur most of the year, with main flushes in autumn and spring. It is frost hardy, grows in sun to semi-shade, in moist, moderately draining soil.

In closing, I would just like to extend heartfelt thanks to Mike Williams for all you do to support our group & this newsletter; for your unstinting generosity of time, energy, sharing of knowledge and resources, and energetic enthusiasm for all things native plants and the APS community.



Prostanthera cryptandroides
Photo: Warren and Gloria Sheather <https://resources.austplants.com.au/plant/prostanthera-cryptandroides/>



Grevillea 'Old Gold'
Image: <https://austraflora.com/project/grevillea-old-gold/>



Callistemon subulatus
Photo: Norbert Ryan



Crowea exalata Photo: [By Melburnian - Own work, CC BY 2.5, https://commons.wikimedia.org/w/index.php?curid=1488823](https://commons.wikimedia.org/w/index.php?curid=1488823)

Growing at Ironstone Park part 2...

By Jeanine Petts

Following on from last edition, while still in the 18 month old garden, the next specimens on my camera roll were:

Grevillea preissii 'Seaspray', is a named variety of this WA species, and grows to a rounded shrub of 1m, producing red, bird attracting flowers winter to spring. Best suited to moist, well-drained soil in a full sun site, although it will tolerate a little shade. It is drought and frost hardy once established, also suitable for coastal or windy areas. A useful plant in rockeries and feature plantings.



Grevillea preissii 'Seaspray'

Regelia megacephala was one of the plants mentioned in Royce & Jeanne Raleigh's talk last April, and is grown at Wartook Gardens. It is a WA species found in a small range north of Perth. Architectural and eye-catching for both its different foliage and purple-red flowers. Tolerant of heavy frost, full sun or partial shade, preferring acid to neutral well-drained soils. A highly recommended plant that is great for small spaces such as alongside driveways etc., and responds well to pruning.



Regelia megacephala - Flower & form.

Eucalyptus websteriana is a smaller, and quite ornamental mallee from WA with minniritchi type bark (reddish brown, continuously longitudinally peeling), combined with ornamental flowers and foliage. Pale yellow flowers occur in winter and spring. Grows from 1.5 to 3m tall, occasionally reaching 5m. It is recommended for gardens in seasonally hot, dry areas and requires well-drained soil in full sun. The species is grown at Melton Botanic Gardens, so has shown some tolerance of temperatures down to -5°C. Having a lignotuber, the species can be cut back to ground level if needed.



E. websteriana at MBG 08/2018

Eucalyptus websteriana - at Ironstone Park 11/2021

Eremophila 'Fruit Salad' is an *E. glabra* prostrate variety that makes a hardy groundcover that reaches 0.25m high with a spread of 1.5m wide and can be a vigorous grower. Orange and yellow flowers are produced over a long period. It prefers dry to well-drained soils, tolerating a range of different soil types; sandy, loamy to clay soils, and is frost hardy and drought resistant.



Eremophila 'Fruit Salad' flower & form.

To be continued next month...

Reminders, APS Victoria Diary Dates & Other Events

Thank you

- For the various contributions of articles, answering pesky questions, event information, photos, feedback, proof-reading, researching & providing other information as needed and general support...

A BIG THANK YOU TO:

Christine Cram,
Gerry Wun Ho,
Ian Julian,
Barbara Mau,
Norbert Ryan,
Mike Williams,
Visual Sensations.

APS VIC DIARY DATES...

COVID-19 (coronavirus), restrictions may apply or effect APS-related events.

APS Victoria will endeavour to keep event status updated on the APS Victoria website: <https://apsvic.org.au/events/>

Checking with the event organiser is advised.

APS Heathcote Inc. meets every 2nd Tuesday of the month at Heathcote Mechanics Institute Hall, 121 High St, Heathcote.

Commencing 7:00pm. For further information see their Facebook page: <https://www.facebook.com/Australian-Plants-Society-Heathcote-Inc->

[102380169043080/](https://www.facebook.com/Australian-Plants-Society-Heathcote-Inc-)

Phone: 0419 878 950 or

Email:

heathcoteaps@outlook.com

May 7 - APS Mornington Peninsula Plant Sale. The Briars, Nepean Hwy, Mt Marth. 10am-3:30pm.

May 14 - APS Melton & Bacchus Marsh Plant Sale. 9am-1pm. The venue is expected to be St Andrews Uniting Church. 18 Gisborne Rd, Bacchus Marsh. 9am-1pm.

June - APS Vic COM and garden visit. Hosted by APS Shepparton. North Shepparton Community Centre. 10/14 Parkside Drive Shepparton.

June 25 & 26 - APS Ballarat Winter Flower Show.

Robert Clarke Centre, Ballarat Botanic Gardens, Gilles St, Ballarat. 10am-4pm.

July 16 & 17 - Cranbourne Friends RBGV Spring Plant Sale. 10am-4pm. Plant list available 1 week before sale. Free entry.

August 27 & 28 - APS Yarra Yarra Australian Plants Expo. Eltham Community & Reception Centre, 801 Main Rd, Eltham. 10am-4pm.

September 1 - Wimmera Biodiversity Seminar 2022. Details to follow.

(Continued on page 14)

Committee & Contact Information

AUSTRALIAN PLANTS SOCIETY, MITCHELL GROUP INC.

PO Box 541, Kilmore, Victoria, 3764

No. A0054306V

Email: mitchell@apsvic.org.au

Website: www.apsmitchell.org.au

Committee Members

President: Norbert Ryan 0428 180 651

Vice President: Dawn McCormack

Secretary: Ian Julian 0438 270 248

Email: secretary@apsmitchell.org.au

Treasurer/Memberships:

Christine Cram 0458 238 270

Committee: Jeanine Petts, Victoria Morris & Maureen Thomas.

Group Librarian: Volunteer position open

Plant Sales: Volunteer position open

Newsletter Editor: Jeanine Petts 0409 029 603

Gardens for Wildlife Coordinator: Gerry Wun Ho

Email: g4w@apsmitchell.org.au

Newsletter contributions:

Contributions should be sent to Jeanine Petts

Email: wattlegum@southernphone.com.au

Post: PO Box 381, Pyalong Vic 3521

For inclusion in the next Newsletter please forward contributions prior to the first Monday of each month.

Local Nurseries open for business ...

Please remember to support our local native nurseries...

Valley of 1000 Hills Nursery (David & Helen Laurie) Supplying indigenous tubes stocks. 150 Reid Rd, Reedy Creek. Open Saturdays 10am to 5pm. Phone: 03 5784 9286

Ironstone Park (Peter & Joan Broughton) Specialising in rare, unusual & hard to find native plants.

Lot 33 Paling Rd, Heathcote.

Open by appointment: The garden is looking fabulous with many unusual natives worth looking at. Call Pete on Ph: 0419 878 950 if you would like an appointment or arrange to have plants dropped off.

Russell Wait - Eremophila specialist

Russell grows *Eremophila*, some standard *Grevillea*, and does occasionally have a small quantity of other species. Held in his garden is the Botanical Collection of Eremophila for Plant Trust: which, he has held for approximately 25 years. 11 Tranter Close, Riddells Creek.

Open by appointment: Visitors need to telephone first to arrange access. Phone: 0428 388 211

Diary Dates & Other Events continued...

(Continued from page 13)

September 3 - (to be confirmed) APS Wilson Park (Berwick) Plant Sale. Wilson Botanic Gardens, Berwick. In conjunction with City of Casey Garden Expo.

September 17 & 18 - APS Bendigo Plant Sale. Kangaroo Flat Primary School Gym, Freeman Drive, Kangaroo Flat, Bendigo. 9am-4pm. \$5 entry, children free.

September 25 & 26 APS Loddon Murray COM and Quarterly Gathering. In Swan Hill.

October 1 & 2 APS Grampians Group Pomonal Native Flower Show. Pomonal Hall. 9am-4pm.

September 11 – 16, 2022 - Australian Flora - Past Present Future, ANPSA Biennial Conference 2022 – Kiama, New South Wales. Further details of the Conference, pre- and post-Conference tours and the beautiful town of Kiama can be found on the APS (NSW) website: <https://austplants.com.au/ANPSA-Biennial-Conference-2022>

September 26 to 30, 2022 - 7th Global Botanic Gardens Congress, Melbourne. *Influence and Action: Botanic Gardens as Agents of Change.* Includes a youth program for future gardens' leaders aged 18 to 24. Further details can be found at: 7gbgc.org

Fabulous Peas 2022

FJC Rogers Biennial Seminar

15th - 16th October 2022



Discover the extraordinary world of Australian pea plants.

Saturday York on Lilydale, Mount Evelyn

[Speakers](#) with expertise in identifying, growing and propagating peas. Learn about current research into propagation and growing-on techniques. Evening dinner and an entertaining speaker.

Plant sales of common and unusual pea species. Book sales. Displays. Raffle.

Sunday Coach tours to public and private native gardens which include a wide variety of pea species.

Art exhibition and sale featuring pea plants from 8th – 16th October at Karwarra Australian Botanic Garden. Plant sales.

Registrations now open:

<https://apsvic.org.au/fjc-rogers-seminar-2022/>

fabulouspeas2022@gmail.com

Hosted: Australian Plants Society Maroondah Inc.



AUSTRALIAN PLANTS SOCIETY MITCHELL GROUP INC.

Email: mitchell@apsvic.org.au

PO Box 541, Kilmore Victoria, 3764

Website: www.apsmitchell.org.au

Inc# A0054306V

2021/22 MEMBERSHIP/RENEWAL FORM – July 1 to June 30

This is a combined membership form for APS Vic and APS Mitchell

Please use this form instead of the form sent out with the APS Victoria newsletter

For insurance purposes people who join APS Mitchell must also join APS Victoria Inc.

(Please tick whichever applies) **Application** ☐ **OR** **Renewal** ☐

Title:	Mr / Mrs / Ms / Miss
Surname/s:	
Given name/s:	
Postal Address:	
Town/Suburb:	
Postcode:	
Telephone:	
Email Address:	

(Please tick whichever applies)

Membership Type:		Fees: Note: Membership Year = July 1—June 30		
		APS Victoria	APS Mitchell	Total
<input type="checkbox"/>	Single	\$35.00	\$10.00	\$45.00
<input type="checkbox"/>	Couple/Family (2 adults & 2 dependents)	\$40.00	\$12.00	\$52.00
<input type="checkbox"/>	Student	\$26.00	\$10.00	\$36.00
<input type="checkbox"/>	Organisation	\$44.00	\$10.00	\$54.00
<input type="checkbox"/>	I have paid/pay my APS Vic membership when joining/renewing with another district group. Which Group? : _____ — Include only applicable APS Mitchell Fee:		“ Single \$10.00 “ Family \$12.00 “ Student \$10.00	
<input type="checkbox"/>	Optional Australian Plants Subscription	4 issues:		\$15.00
		Total Due:		\$

☐ I wish to apply for APS Vic/APS Mitchell COVID-19 financial hardship fee waiver.

I/We agree I agree to be bound by the Rules and Bylaws of the Society.

Signed:	Date: / /
----------------	---------------------

I agree to my name being included in a membership list circulated for members' private use: **Yes** ☐ **No** ☐

Payment by: (1) Bank Transfer to BSB 633-000 Account No. 159982271 (Bendigo Bank)

Please include your surname and post code as reference/transaction details

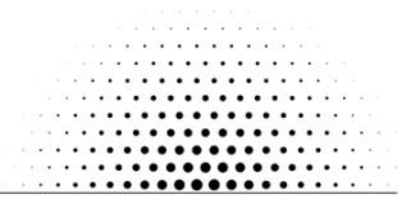
Or (2) Cheque made payable to: APS MITCHELL INC.

Posted to: APS Mitchell Treasurer, P O Box 541, Kilmore Vic 3764

Or (3) Pay via cash or cheque at an APS Mitchell monthly meeting (usually 3rd Monday of the month 7:30pm John Taylor Room, Kilmore Library, Sydney St Kilmore. See website for details)

MITCHELL SHIRE COUNCIL.

COVID-19 Community Facility Safe Plan



COVID Safe Plan For APS Mitchell Group Inc. Organisation

PURPOSE

Mitchell Shire Council requires a COVID-19 Safe plan for groups and organisations who wish to return using Council owned or managed facilities. The following plan supports a safe approach for building use. Council welcomes the inclusion of any special guidance from your peak bodies and associations where this has been provided.

SCOPE

This plan applies to all people entering the **KILMORE LIBRARY JOHN TAYLOR ROOM** building located at **12 SYDNEY STREET KILMORE** in line with the easing of COVID-19 restrictions identified by the Department of Health and Humans Services.

PLAN

3.1 Pre-Return Risk Assessment

Prior to people attending the site a Risk Checklist must be completed identifying how the requirements for physical distancing and people density will be maintained. A checklist to enact the plan is attached in Appendix 1

3.2 Considering groups needs

Organisers will discuss potential vulnerabilities with all group members and encourage individual participants to consider their own risk and need to attend. The group may need to consider supporting different members depending on their circumstances. Circumstances may have changed post COVID-19, for example they may now have additional carer's responsibility or family members with specific health risks.

Social and physical vulnerabilities that might affect a person attending the facility include:

- Immune-compromised: may limit attendance or may require additional controls
- Social isolation: managing return to social settings may not be easy for some people
- Need to assist family with child minding or other activities

Our plan for managing our members is:

- Sending Covid-19 safe plan to all members with the meeting groups notice
- A copy of the Covid-19 Safe plan with the meeting registration book
- Limit numbers to current DHS prescribed restriction number's
- Update all members as circumstances change

Any person who is unwell should not enter the building. This includes presenting with cold or flu symptoms including fever, runny nose, coughing, sore throat, aches or diarrhea. People with symptoms will be asked to leave.

This plan has been communicated to all affected members of the group.

MITCHELL SHIRE COUNCIL.

COVID-19 Community Facility Safe Plan



(Continued from page 16)

3.3 Return to facilities

3.3.1 Physical distancing measures

Physical distancing measures mean that people from separate households must be more than 1.5 metres from each other. In addition, a minimum space of 2 metres x 2 metres is required for every person in any room they access.

Spaces (e.g. corridors) where there is a potential for people to come in contact with each other may exist in the building. It is acceptable that people walk past each other in these spaces as the amount of time they are together is minimal. However, they are not to stop in these spaces and, if possible, the movement of members should be managed so that people will not physically brush past each other in this space.

Rooms in the building and the maximum number of people allowed (subject to current restriction limits on total numbers):

Room Name	Size (width X depth)	Max people (width x depth/2)
John Taylor Room		Max 40 people

Signs will be placed into any room where the maximum occupancy is less than the maximum allowed into the entire facility to advise that people are to wait until the room is vacated.

Cleanliness

Cleaning arrangements for the building are to be documented.

On entry to the building it is advised that every person wash their hands with soap and water or carries hand sanitiser to apply at entry. Everyone should avoid touching their faces.

For this building, at the end of every session any equipment and all tables and chairs used by the members need to be cleaned by the meeting organiser using soap and water with washable or disposable cloths. Spray and wipe is also satisfactory for cleaning.

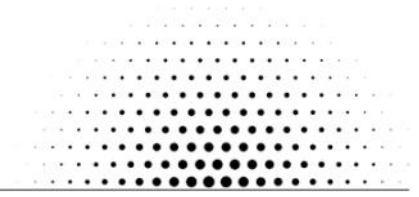
Chairs with soft covers will, where possible, not be used as these are difficult to wipe down.

Council clean as per schedule arranged with the Contracts Management Coordinator at Mitchell Shire Council. This this has been communicated to each building manager.

(Continued on page 18)

Covid Safe Meeting Plan...

MITCHELL SHIRE COUNCIL. *COVID-19 Community Facility Safe Plan*



(Continued from page 17)

COVID-19 Infection

If a member is diagnosed with COVID-19, the following process will apply:

- Notify members who may have had contact with the person per DHHS guidance
- Ensure the privacy of the individual is maintained
- Seek assistance from Council contact
- Inform Council to arrange a deep clean of the building

3.6 Breach of the policy

Everyone will be treated with respect and it is expected that members will adhere to guidelines to physical distancing to help minimise the risk of COVID-19 being spread. Should someone test positive who attended a meeting space their privacy will be maintained, however Council will need to support a contact tracing regime to inform others.

3.7 Legal Sources of policy

- [National COVID-19 Safe Workplace Principles](#)
- [NCCC COVIDSafe plan](#)
- *Occupational Health and Safety Act 2004 (VIC)*
- *Occupational Health and Safety Regulation 2017 (VIC)*
- *Disability Discrimination Act 1992 (Cth)*
- *Equal Opportunity Act 2010 (VIC)*

Appendix 1 – Checklist (to be completed for each session and retained by user group)

Before activity

- ☐ Date and time of activity _____
- ☐ Activity type _____
- ☐ Rooms used (e.g. hall and kitchen) _____
- ☐ Responsible person name (must be present throughout activity)

The following available:

- ☐ Advice on COVID-19 available to everyone –
e.g. www.dhhs.vic.gov.au/staying-safe-covid-19
- ☐ Specific vulnerabilities determined and vulnerable group members encouraged to participate in other ways or to make arrangements with organisers for any special requirements to facilitate attendance
- ☐ Room sizes and number of people in each room signed

(Continued on page 19)

Covid Safe Meeting Plan...

MITCHELL SHIRE COUNCIL.

COVID-19 Community Facility Safe Plan



(Continued from page 18)

- ☐ Places where it will be difficult to maintain 1.5m spacing identified
- ☐ Signs for 1.5m and COVID-19 displayed
- ☐ Attendance sheet available and completed by all people entering facility
- ☐ Consideration for leaving doors open to allow access through doors without touching
- ☐ Advised patrons to hand wash/ hand sanitise as soon as they enter the building (consider leaving the outer toilet door propped open to avoid touching)
- ☐ Soap and water or disinfectant spray and disposable cloth (e.g. paper towel) available to clean surfaces touched
- ☐ Gloves available

Other risks to be managed (please list, use reverse of sheet if more space required)

During activity

- ☐ Encourage participants not to bring belongings into centre (less to contaminate and clean)
- ☐ All attendees have been asked if they are unwell or have a temperature
- ☐ All attendees have been asked to wash their hands upon entry
- ☐ All attendees have provided their contact information on attendance sheet
- ☐ All attendees have been informed about safe distancing (1.5m)
- ☐ All attendee have been advised of other risks to be managed (please see list, use reverse of sheet if more space required)

After activity

- ☐ All items used (including tables and chairs) washed with soap and water or sprayed and wiped with a disinfectant. This is the responsibility of the meeting organiser
- ☐ This form and the attendance sheet completed and stored in a centralised location (e.g. office) – to be made available upon request

Plan completed by:

Name	Ian Julian
Role	Secretary APS Mitchell Group Inc.
Contact Number	0438 270 248
Email	apsmitchell@gmail.com
Date	28-01-2021
Signature	<i>Ian Julian</i>