

# NEWSLETTER



## AUSTRALIAN PLANTS SOCIETY MITCHELL GROUP INC.

Email: [mittell@apsvic.org.au](mailto:mittell@apsvic.org.au)

Website: [www.apsmitchell.org.au](http://www.apsmitchell.org.au)

PO Box 541, Kilmore Victoria, 3764

Inc# A0054306V

May  
2022

Volume 9, Issue 4

### May news...!

Hello & welcome to our May issue. What a lovely wet Autumn we've had. Even if a little inconvenient at times, my garden is loving it!

For this month's meeting we return to the John Taylor Room and our Guest Speaker program (see right and page 2 for details). We would love to see a goodly audience turn out & make our guest speaker, Melissa Stagg feel most welcome. Do come along & join us.

Owing to near constant rain on Easter Monday, along with no RSVP's, the Garden visit at Christine & Ian's unfortunately turned out a washout, and sadly, did not go ahead. The committee extends apologies for any inconvenience caused and will endeavor to do our best to improve planning in the future.

In place of an April meeting report, Norbert and Gerry have put together a fine article on the Hidden Valley Railway Reserve. Likewise, I have also added extra pages to the current article series *Growing at Ironstone Park*. We hope you enjoy the read.



*Xerochrysum  
bracteatum*

08.05.22

Photo: J Petts

Our next newsletter will be due for issue on or within a few days of Monday June 13th. Contributions big & small remain very greatly appreciated & always needed. If you can help out with items of interest please send them in by June 6th. Email to:

[wattlegum@southernphone.com.au](mailto:wattlegum@southernphone.com.au)

Again, heartfelt thanks to everyone who supports our group, & this newsletter. Your assistance is invaluable & deeply appreciated. The generosity & support of our members, friends & guest speakers is what makes the content of these newsletters possible.

Much thanks to all for your patience & understanding. Cheers until next time,

Jeanine

### Inside this issue:

*Gardens for Wildlife news* Pg 2

*May Meeting - We return to the John Taylor Room with our Guest speaker Melissa Stagg* Pg 2

*Membership* Pg 2

*Hidden Valley Railway Reserve* Pg 3

*Growing at Ironstone Park part 3* Pg 7

*Reminders, APS Vic Diary Dates etc....* Pg 10

*Committee & Contact Information* Pg 10

*Local native plant nurseries* Pg 10

### Autumn Orchids video...

For those interested in orchids, Paul Piko has recently released a video on Autumn Orchids. In this video he checks out some orchids around Beechworth, passes through the goldfields, tells some family stories and peaks down a mineshaft.

The video can be found on this YouTube channel: [OrchidWatcher](https://www.youtube.com/channel/UCQzMGdVQF8Y)

Click on the following link to view the video:

<https://youtu.be/LqzMgDvQF8Y>

### Mitchell Diary Dates..

- In line with ongoing Covid-19 advice, restrictions may apply or affect APS related events. If in doubt, please [contact us](#) (see contacts list on page 10). **Please note:** Meetings will be held under the requirements of our [Covid Safe facility Plan](#); **Please read the plan (from page 13) prior to attending**
- Monday May 16th Evening Meeting 7:30pm Guest Speaker: Melissa Stagg - Seed collecting with the Goulburn Broken Indigenous Seed Bank.
- June Meeting - to be advised.
- July Meeting - to be advised.
- **SAVE THE DATE!** APS Mitchell Spring Expo & Plant Sale: Saturday October 15th, 2022. 9am-3pm.



## Gardens for Wildlife news...

By Gerry Wun Ho

In this month's species spotlight, is a grass I feel should be a staple on many front and backyards:

### Kangaroo Grass (*Themeda triandra*)

If you were to ask an ecologist to name the quintessential grass in Victoria, you would more likely than not receive the reply 'Kangaroo Grass'. It may come as a surprise then to learn that *T. triandra* is not only native to Victoria and Australia, but is also found in Asia-Pacific and Africa.

With such a cosmopolitan distribution, *T. triandra* has no doubt adapted to various environments. It is therefore important to source your tube stock or seed locally to achieve robust growth. In Australia, this tufted grass is perennial, and grows up to 1.5 m tall and 1 m wide. It thrives in full sun to part shade on clay or sandy soil. Leaves are green to grey, and it is one of the few grasses with a branched flowering stem: a field of nodding Kangaroo Grass heads can be quite mesmerising when it flowers from late spring over summer.

Kangaroo Grass provides ample habitat for wildlife. Its seeds are eaten by birds, and the grass provides shelter for native caterpillars, reptiles, frogs, and insects.

The species can be grown from seed, if the seeds are stored (6–11 months) before planting. Smoke treatment can help to break seed dormancy. The tufts can also be divided, with spring as the best time to do so after winter dormancy and before flowering season.



*Themeda triandra*  
Photo:  
Gerry Wun Ho

**MEETINGS ARE HELD ON THE  
3rd MONDAY OF THE MONTH  
(February to November)  
unless otherwise advised**

**Commencing 7:30 pm in the  
John Taylor Room, Kilmore  
Library, Sydney Street,  
Kilmore Vic 3764**

**Entry \$2.00 Gold Coin**

**Guest Speaker**

**Door Prizes**

**Plant Sales**

**Use of the APS Mitchell free  
Library**

**Supper & Chat**

**VISITORS VERY WELCOME**

Members & Visitors are  
encouraged to bring along  
exhibits for our "Show & Tell"  
Flower Specimen Table

Please label plants



## May Meeting—Monday 16th 7:30pm

This month, self confessed "fellow plant nerd", Melissa Stagg is joining us in the John Taylor Room as our guest speaker. Melissa has kindly shared the following about herself and talk: "Even though I'm mostly known in conservation and environment circles, my background is actually in landscape architecture; a profession not necessarily known for its conservation credentials. Following on from my bachelor degree and master degrees in landscape architecture, I started my own consulting business in 2014, practicing in Melbourne, designing indigenous gardens. Tiring of the Melbourne lifestyle and working in urban environments, I returned to my home town of Shepparton in 2016. Spurred on by my lifelong love of the bush and being outdoors, I soon became embedded in the enviro circle that is the Euroa Arboretum; a not-for-profit organisation working in the environmental and conservation sector. Starting out quite hands-on working in the bush crew, then moving into the indigenous nursery, I eventually ended up at the GBIS (Goulburn Broken Indigenous Seedbank, which is managed by the Euroa Arboretum). At the beginning of 2020, just before covid hit, I moved to Wallan. In mid 2021 I also took on the role as Senior Environment Officer at Mitchell Shire Council, while still working with the GBIS and continuing to practice as a landscape architect in my own small business. Now today, though I'm wearing three hats in my career at the moment, the common thread across them all is a love for our native environment, with a particular passion for indigenous plants.

For my talk, I'll mostly be speaking about my work as a seed collector with the Goulburn Broken Indigenous Seedbank, where I get to spend much of my time tripping all around the countryside. Covering a large part of Vic in my travels, I get to see and collect plants in a diverse range of vastly different environments, with a spectacular array of flora. All for the purpose of 'bringing back the bush'. I look forward to meeting more of the members of the APS and sharing my passion for the flora of the Goulburn Broken region and surrounding areas."

Melissa is always keen to meet and talk plants with fellow enthusiasts, so please do come along for the evening. Feel free to bring guests & friends, as everyone is always welcome at APS Mitchell events.

## Memberships...

A big, hearty, warm welcome to our newest members; Danielle Hickford, Cynthia Lim, Gayle Shugg & Peter White. For all membership enquiries please contact Christine: Phone 0458 238 270 or Email to the attention of the Membership Officer:

[mitchell@apsvic.org.au](mailto:mitchell@apsvic.org.au) A membership form is on page 12 of this newsletter. Further information, contact details, along with a downloadable [membership form](#) can also be found at our website: <http://www.apsmitchell.org.au/membership/>



## *Hidden Valley Railway Reserve...*

*By Norbert Ryan & Gerry Wun Ho*

At the northern boundary of Hidden Valley lies a 1.2km section of the former Heathcote Junction to Bendigo railway line. This section of track remains one of the few sections which weren't sold to neighbouring property owners following the closure of this line in 1968. The railway line from Heathcote Junction to Kilmore was commissioned in October 1888 with two local stations, Leslie and Bylands. The line climbs steeply to reach Leslie which is situated within this reserve, to the south of Arkell's Lane at an elevation of 400m; this somewhat isolated little station was closed in September 1952 and the station house and shelter relocated. The apparent proximity of railway stations reflects a by-gone era when agriculture and timber cutting were labour intensive activities and there were small communities scattered through both areas. This was heavily wooded country and Leslie station was important for loading of firewood for Melbourne, estimated to amount to thousands of tons per week in the early 1900's.

The future of the line was dealt a severe blow with the closure of the Heathcote-Bendigo section in 1958, to accommodate the building of Lake Eppalock. The remaining section of line from Heathcote Junction to Heathcote remained in use until late 1968. The line was used predominantly for transport of timber and firewood to Melbourne and Bendigo and for limited passenger services. Government legislation in 1975 resulted in the dismantling of the line and all infrastructure. In general, the railway land was sold to adjoining landowners or leased from Victorian Railways but some land was retained between Kilmore and Heathcote Junction; this is now managed by [VicTrack](#). Where the track passed through state forest, the land was retained as Crown Land. See:

[BendigoKilmorerailtrail.com/history-resources/quick-history/](https://BendigoKilmorerailtrail.com/history-resources/quick-history/)

In 2017 a detailed feasibility study was published, investigating the potential for establishing a rail trail along this route, to connect with the existing O'Keefe rail-trail established from Heathcote to Bendigo ([Wallan to Heathcote Rail Trail Route feasibility](#)). The un-alienated 1.2km section of line, described above, has attracted the attention of cycling and railway enthusiasts and conservationists alike, perhaps viewed as a symbolic first step in establishing the Wallan-Heathcote rail-



Entering from Birdwood Crescent, Hidden Valley, the trail (indented) progresses into a wooded section of track. Presumably during operational times the encroaching trees would have been cleared. Thus, many of these represent regrowth, commencing in late 1968. Photo: Norbert Ryan



The cutting. Wallaby grass in foreground hints at the relatively undisturbed nature of the flora of this small rise, the richest area along the track. Photo: Norbert Ryan

*(Continued on page 4)*



## *Hidden Valley Railway Reserve continued...*

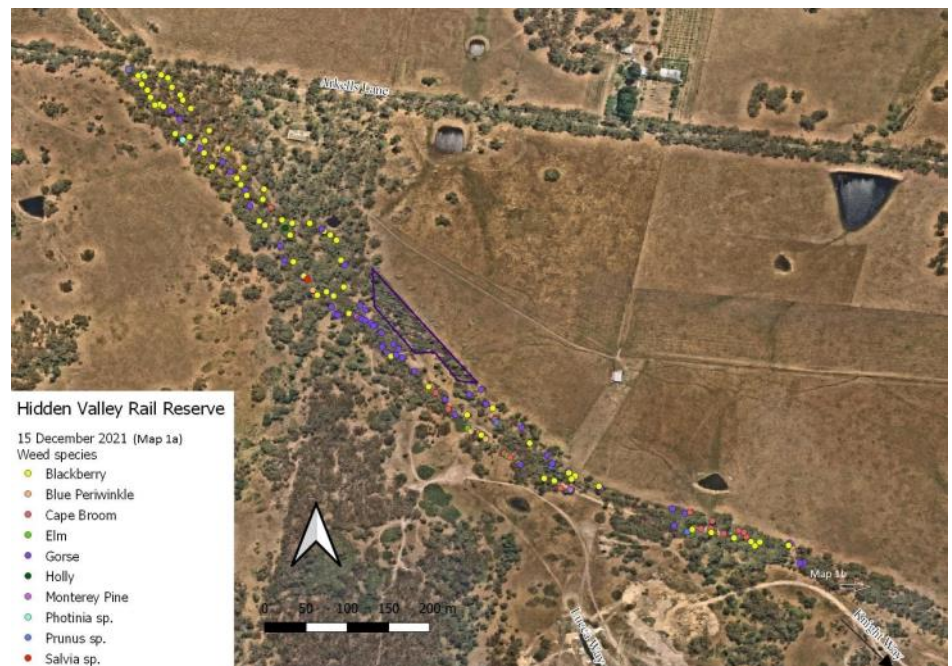
*(Continued from page 3)*

trail, to connect with the existing O'Keefe trail from Bendigo.

Working bees on-site to return this trail to a functional walking/cycling track have involved the following groups: Friends of the Bendigo-Kilmore Rail Trail, Mitchell Bicycle Users Group (mbug) and Wallan Environment Group (WEG). Support has also been provided by the Merri Creek Management Committee/ Upper Merri Landcare Coordinator, Chris Cobern (see weed map photo below).

The initial heavy work of improving access from Arkell's Lane and clearing fallen trees was performed by Bendigo rail enthusiasts. Subsequent working bees have involved volunteers to clear the track and begin cutting and poisoning woody weeds including gorse, blackberry, briar rose and Cape broom. The current status of this land is that it remains under the jurisdiction of VicTrack, with access approval agreements now being negotiated. As with other rail trails, Landcare will likely be contracted to provide more systematic control of weeds. Under such arrangement, Mitchell Shire would be effectively relieved of any management responsibility. Nevertheless the trail should ultimately be recognised as an additional site for conservation and recreational purposes within Mitchell Shire.

One of the attractions of railway reserves is that they are often the last preserve of locally indigenous flora. This expectation has been amply fulfilled with this isolated pocket of land, despite the local history of forest removal. The list of species detected, just from casual observation during WEG working bees is impressive. It's sad to consider that grazing animals can so readily



Picture 1. An overview of the trail, showing weed mapping. The dimensions of the track follow the dotted area, running from above Knight St to Arkell's Lane. The track intersected the road and the railway cutting is visible on both sides of the road, the northern side being on private property. Photo and data supplied by Chris Cobern, Upper Merri Landcare Facilitator; Merri Creek Management Committee.



Heath in flower on side of cutting.

Photos: Norbert Ryan

*(Continued on page 5)*

## *Hidden Valley Railway Reserve continued...*

*(Continued from page 4)*

destroy this fragile eco-system, as has happened on adjoining properties where the reserve has reverted to private ownership; some larger trees may be retained but the understory has been obliterated.

The list of some species recognised to date is shown below. The species names are sometimes presumptive, a more detailed survey will be needed to qualify this detail. It should be emphasized that at this early stage, the list remains far from comprehensive.

For anyone interested in joining working bees at this site, please contact Norbert Ryan. All activities have been organised by [WEG](http://www.weg.org.au) (or visit their website, additional membership is welcomed). All participants are required to sign in, to ensure there is insurance cover provided.

<https://www.mcmc.org.au/wallan-environment-group>

### **Plants detected on rail trail reserve**

*Acacia aculeatissima* Snake Wattle

*Acacia pycnantha* Golden Wattle

*Acacia melanoxylon* Blackwood Wattle

*Styphelia humifusa* (Syn. *Astroloma humifusum*) Cranberry Heath

*Billardiera mutabilis* Apple-berry

*Brachyloma daphnoides* Daphne Heath

*Brunonia australis* Blue Pincushion

*Burchardia umbellata* Milkmaids

*Coprosma quadrifida* Prickly Currant-bush

*Coronidium scorpioides* Button Everlasting

*Correa reflexa* Common Correa

*Daviesia latifolia* Hop Bitter-pea

*Dianella revoluta* Black-anther Flax-lily

*Dillwynia cinerascens* Grey Parrot-pea

*Epacris impressa* Common Heath

*Eucalyptus melliodora* Yellow Box



*Daviesia latifolia* Hop Bitter-pea in flower.  
Photo: Norbert Ryan



Large areas carpeted by *Platylobium montanum* subsp. *prostratum*.  
Photo: Norbert Ryan

*(Continued on page 6)*



## Hidden Valley Railway Reserve continued...

(Continued from page 5)

*Eucalyptus obliqua* Messmate Stringybark

*Eucalyptus radiata* Narrow-leaf Peppermint

*Eucalyptus viminalis* Manna Gum

*Eucalyptus dives* Broad-leaf Peppermint

*Gahnia radula* Thatch Saw-sedge

*Goodenia* sp.

*Kunzea* sp. Burgan

*Leptospermum continentale* Prickly Tea-tree

*Lomandra* sp. Mat-rush

*Platylobium montanum* ssp. *prostratum* Mountain Flat-pea

*Wahlenbergia stricta* Tall Bluebell.



*Brunonia australis* (Blue Pincushion) (above) and *Chrysocephalum semipapposum* (Clustered Everlasting) (below) growing on rise above the cutting.

Photos: Norbert Ryan



*Lomandra* sp.; same area: view showing native grasses and *Dianella revoluta* (Black-anther Flax-lily), contrasting with the heavily grazed paddock alongside.

Photos: Norbert Ryan



## Growing at Ironstone Park part 3...

By Jeanine Petts

Continuing from last edition, more plants in the 18 month old garden were:

*Haloragodendron monospermum* forms an erect shrub growing 1-2m high, and is endemic to south-eastern NSW. Usually found growing in heathland and dry sclerophyll forest at higher elevations. Cream, four-petaled flowers, sometimes tinged with pink, occur during spring-summer and are held in clusters at the tips of branches. It will grow in full sun to part shade in well-drained soils, and is frost hardy and drought tolerant once established. Tolerates and responds well to pruning.

The next species that caught our attention was drawing in bees, both introduced honey, and native bees. So, at Victoria's encouragement, I dallied a few moments longer to take extra photos of the busy pollinators for later ID.

*Eremophila mackinlayi* is a stunning WA species that forms a shrub growing to 1.5m high. Large showy, lilac-blue-purple, flowers occur most of the year and following new growth. It tolerates hot, dry conditions, drought, moderate frost, and grows best in full sun, but will accept some shade. Russell Wait's book *Growing Eremophila* lists two subspecies; *E. mackinlayi* subsp. *spathulata*, which, is found inland and has spoon-shaped leaves. While *E. mackinlayi* subsp. *mackinlayi* is found closer to the coast. They require well-drained soils and good air circulation.

*Agathis robusta* the Queensland Kauri Pine, is a member of the ancient Araucariaceae family, which, dates back to the temperate rainforests of the supercontinent of Gondwana. Growing to form a slender, straight trunked tree reaching from 20-50m tall x 6-12m wide, it prefers deep soils with reliable sub-soil moisture in a full sun to part shade site. Leaves are glossy, dark green, flat, leathery, lance-shaped, and are unlike typical conifers. New growth is an attractive creamy bronze colour, and scaly, green, oval cones grow up to 12cm long. When young, they make a good indoor plant for a sunny position.



*Haloragodendron monospermum*



*Eremophila mackinlayi*

Right: Form

Above: flower with a bee from genus *Megachile* - Leafcutter, Mortar & Resin Bees.



*Agathis robusta* 18 months old.

Form at right. Above: Note creamy coloured new growth.



(Continued on page 8)



## Growing at Ironstone Park part 3...

By Jeanine Petts

(Continued from page 7)

*Leptospermum turbinatum* Grampians tea-tree, grows to around 2m x 2m and has glossy dark (near black) foliage, and bears large white flowers in late spring. It is endemic to the Grampians region, found on sandstone and granitic outcrops. In cultivation it makes an excellent screening or hedge plant, is showy in flower and hardy; tolerating frost and most soils providing drainage is good.

*Grevillea georgeana* is endemic to WA and forms an erect prickly shrub with showy red flowers held on stems above the foliage from winter into spring. It performs best in well-drained soils with a full sun site. Plants respond well to regular pruning.



*Leptospermum turbinatum* with visiting Western Honey Bee - *Apis mellifera*.



*Grevillea georgeana* Above: form. At right: flowers.



*Glischrocaryon flavescens*



*Glischrocaryon flavescens* Pale Yellow Pop-flower is an herbaceous perennial found in WA and SA that grows from woody rootstock. It can range in size from 0.30m to up to 1.5m high. Masses of creamy to pale yellow flowers are held at the tops of long, pithy stems over a long period from August to February. Fruits expand,

(Continued on page 9)



## Growing at Ironstone Park part 3 continued...

By Jeanine Petts

(Continued from page 8)

drying as they mature, becoming papery, light, thin, and pop if squeezed. They require free draining soils in full sun and are frost hardy once established.

*Brachychiton compactus* Whitsunday Bottle Tree is a rare species from a limited range in Central East Queensland, and is listed as Near Threatened. It can grow from 4m to 15m tall, has dark grey fissured bark, and bears white flowers with pink-red markings. Prefers well-drained soil in full sun to part shade.

*Grevillea leucopteris* White-plumed Grevillea may be named Old Socks by some due to its fragrance, however, it is a striking feature plant that can grow to around 5m tall and holds its flowers on tall canes above ferny, grey-green foliage. The large, white to cream flowers that are blush pink in bud occur in groups from July to January. It is suited for hot dry sites in well-drained soils, with an open sunny position, and is drought and frost resistant once established.

*Chamelaucium x Verticordia* 'Paddy's Pink' is a hybrid that forms a bushy erect shrub growing to around 2m, and has fragrant spicy foliage. It prefers well-drained, sandy soils in a part to full-sun position without much humidity, and tolerates both drought and light to moderate frost of at least -4c.

Showy rose-pink flowers cover the bush during spring-summer and make great cut flowers. There are at least two other hybrid varieties: 'Eric John' (grows to 1.5m), and 'Susie' (grows to 1x1m).

More to follow next month...



*Brachychiton compactus* at 18 months old.



*Chamelaucium x Verticordia* 'Paddy's Pink'



*Grevillea leucopteris* above left: young buds, flowers about to open & above right: form.



All Photos in this article: J Petts.

## Reminders, APS Victoria Diary Dates & Other Events

### Thank you

- For the various contributions of articles, answering pesky questions, event information, photos, feedback, proof-reading, researching & providing other information as needed and general support...

#### A BIG THANK YOU TO:

Christine Cram,  
Ian Julian,  
Barbara Mau,  
Paul Piko,  
Norbert Ryan,  
Melissa Stagg,  
Gerry Wun Ho.

#### APS VIC DIARY DATES...

**COVID-19 (coronavirus), restrictions may apply or effect APS-related events.**

APS Victoria will endeavour to keep event status updated on the APS Victoria website: <https://apsvic.org.au/events/>

**Checking with the event organiser is advised.**

APS Heathcote Inc. meets every 2nd Tuesday of the month at Heathcote Mechanics Institute Hall, 121 High St, Heathcote.

Commencing 7:00pm. For further information see their Facebook page: [https://www.facebook.com/Australian-Plants-Society-Heathcote-Inc-](https://www.facebook.com/Australian-Plants-Society-Heathcote-Inc-102380169043080/)

[102380169043080/](https://www.facebook.com/Australian-Plants-Society-Heathcote-Inc-102380169043080/)

Phone: 0419 878 950 or

Email:

[heathcoteaps@outlook.com](mailto:heathcoteaps@outlook.com)

**May 14 - APS Melton & Bacchus Marsh Plant Sale.** 9am-1pm. St Andrews Uniting Church. 18 Gisborne Rd, Bacchus Marsh. 9am-1pm.

**June - APS Vic COM** and garden visit. Hosted by APS Shepparton. North Shepparton Community Centre. 10/14 Parkside Drive Shepparton.

**June 25 & 26 - APS Ballarat Winter Flower Show.** Robert Clarke Centre, Ballarat Botanic Gardens, Gilles St, Ballarat. 10am-4pm.

**July 23 & 24 - Cranbourne Friends RBGV Winter Plant Sale.** 10am-4pm. Plant list available 1 week before sale. Free entry.

**August 27 & 28 - APS Yarra Yarra Australian Plants Expo.** Eltham Community & Reception Centre, 801 Main Rd, Eltham. 10am-4pm.

**September 1 - Wimmera Biodiversity Seminar 2022.** Details to follow.

**September 3 - (to be confirmed) APS Wilson Park (Berwick) Plant Sale.** Wilson Botanic Gardens, Berwick. In conjunction with City of Casey Garden Expo.

(Continued on page 11)

## Committee & Contact Information

AUSTRALIAN PLANTS SOCIETY, MITCHELL GROUP INC.

PO Box 541, Kilmore, Victoria, 3764

No. A0054306V

Email: [mitchell@apsvic.org.au](mailto:mitchell@apsvic.org.au)

Website: [www.apsmitchell.org.au](http://www.apsmitchell.org.au)

#### Committee Members

President: Norbert Ryan 0428 180 651  
Vice President: Dawn McCormack  
Secretary: Ian Julian 0438 270 248  
Email: [secretary@apsmitchell.org.au](mailto:secretary@apsmitchell.org.au)  
Treasurer/Memberships: Christine Cram 0458 238 270  
Committee: Jeanine Petts, Victoria Morris & Maureen Thomas.  
Group Librarian: Volunteer position open  
Plant Sales: Volunteer position open  
Newsletter Editor: Jeanine Petts 0409 029 603  
Gardens for Wildlife Coordinator: Gerry Wun Ho  
Email: [g4w@apsmitchell.org.au](mailto:g4w@apsmitchell.org.au)

#### Newsletter contributions:

Contributions should be sent to Jeanine Petts  
Email: [wattlegum@southernphone.com.au](mailto:wattlegum@southernphone.com.au)

Post: PO Box 381, Pyalong Vic 3521

**For inclusion in the next Newsletter please forward contributions prior to the first Monday of each month.**

## Local Nurseries open for business ...

Please remember to support our local native nurseries...

**Valley of 1000 Hills Nursery** (David & Helen Laurie) Supplying indigenous tubes stocks. 150 Reid Rd, Reedy Creek. Open Saturdays 10am to 5pm. Phone: 03 5784 9286

**Ironstone Park** (Peter & Joan Broughton) Specialising in rare, unusual & hard to find native plants. Lot 33 Paling Rd, Heathcote. Open by appointment: The garden is looking fabulous with many unusual natives worth looking at. Call Pete on Ph: 0419 878 950 if you would like an appointment or arrange to have plants dropped off.

**Russell Wait** - Eremophila specialist  
Russell grows *Eremophila*, some standard *Grevillea*, and does occasionally have a small quantity of other species. Held in his garden is the Botanical Collection of Eremophila for Plant Trust: which, he has held for approximately 25 years. 11 Tranter Close, Riddells Creek.

Open by appointment: Visitors need to telephone first to arrange access. Phone: 0428 388 211



---

## *Diary Dates & Other Events continued...*

*(Continued from page 10)*

**September 11 – 16 - Australian Flora - Past Present Future, ANPSA Biennial Conference 2022** – Kiama, New South Wales. Further details of the Conference, pre- and post-Conference tours and the beautiful town of Kiama can be found on the APS (NSW) website: <https://austplants.com.au/ANPSA-Biennial-Conference-2022>

**September 17 & 18 - APS Bendigo Plant Sale.** Kangaroo Flat Primary School Gym, Freeman Drive, Kangaroo Flat, Bendigo. 9am-4pm. \$5 entry, children free.

**September 25 & 26 - APS Loddon Murray COM and Quarterly Gathering.** In Swan Hill.

**September 26 to 30, 2022 - 7<sup>th</sup> Global Botanic Gardens Congress, Melbourne.** *Influence and Action: Botanic Gardens as Agents of Change.* Includes a youth program for future gardens' leaders aged 18 to 24. Further details can be found at: [7gbgc.org](http://7gbgc.org)

**October 1 & 2 - APS Grampians Group Pomonal Native Flower Show.** Pomonal Hall. 9am-4pm.

**October 8 - APS Echuca Moama Native Flower Showcase.** Echuca Masonic Lodge Hall, 42 High St Echuca.

**October 22 & 23 - APS Ballarat Spring Flower Show.** Robert Clark Centre, Ballarat Botanic Gardens, Gilles St, Ballarat. 10am-4pm.

**October 22 & 23 - Cranbourne Friends RBGV Spring Plant Sale.** 10am-4pm. Wide range of plants, plant list available one week before sale. Free Entry.

---

## **Fabulous Peas 2022**

### **FJC Rogers Biennial Seminar**

**15<sup>th</sup> - 16<sup>th</sup> October 2022**

Discover the extraordinary world of Australian pea plants.

**Saturday** York on Lilydale, Mount Evelyn

**Speakers** with expertise in identifying, growing and propagating peas. Learn about current research into propagation and growing-on techniques. Evening dinner and an entertaining speaker.

Plant sales of common and unusual pea species. Book sales. Displays. Raffle.

**Sunday** Coach tours to public and private native gardens which include a

wide variety of pea species.

Art exhibition and sale featuring pea plants from 8<sup>th</sup> – 16<sup>th</sup> October at Karwarra Australian Botanic Garden. Plant sales.

Registrations now open:

<https://apsvic.org.au/fjc-rogers-seminar-2022/>

[fabulouspeas2022@gmail.com](mailto:fabulouspeas2022@gmail.com)

**Hosted: Australian Plants Society Maroondah Inc.**

---





# AUSTRALIAN PLANTS SOCIETY MITCHELL GROUP INC.

Email: [mitchell@apsvic.org.au](mailto:mitchell@apsvic.org.au)

PO Box 541, Kilmore Victoria, 3764

Website: [www.apsmitchell.org.au](http://www.apsmitchell.org.au)

Inc# A0054306V

## 2021/22 MEMBERSHIP/RENEWAL FORM – July 1 to June 30

### This is a combined membership form for APS Vic and APS Mitchell

Please use this form instead of the form sent out with the APS Victoria newsletter

For insurance purposes people who join APS Mitchell must also join APS Victoria Inc.

(Please tick whichever applies) **Application** ☐ **OR** **Renewal** ☐

<b>Title:</b>	<b>Mr / Mrs / Ms / Miss</b>
<b>Surname/s:</b>	
<b>Given name/s:</b>	
<b>Postal Address:</b>	
<b>Town/Suburb:</b>	
<b>Postcode:</b>	
<b>Telephone:</b>	
<b>Email Address:</b>	

(Please tick whichever applies)

<b>Membership Type:</b>		<b>Fees:</b> Note: Membership Year = July 1—June 30		
		APS Victoria	APS Mitchell	Total
<input type="checkbox"/>	<b>Single</b>	\$35.00	\$10.00	<b>\$45.00</b>
<input type="checkbox"/>	<b>Couple/Family</b> (2 adults & 2 dependents)	\$40.00	\$12.00	<b>\$52.00</b>
<input type="checkbox"/>	<b>Student</b>	\$26.00	\$10.00	<b>\$36.00</b>
<input type="checkbox"/>	<b>Organisation</b>	\$44.00	\$10.00	<b>\$54.00</b>
<input type="checkbox"/>	<b>I have paid/pay my APS Vic membership when joining/renewing with another district group. Which Group? :</b> _____ — <b>Include only applicable APS Mitchell Fee:</b>		“ Single \$10.00 “ Family \$12.00 “ Student \$10.00	
<input type="checkbox"/>	<b>Optional Australian Plants Subscription</b>	<b>4 issues:</b>		<b>\$15.00</b>
		<b>Total Due:</b>		<b>\$</b>

☐ I wish to apply for APS Vic/APS Mitchell COVID-19 financial hardship fee waiver.

I/We agree I agree to be bound by the Rules and Bylaws of the Society.

<b>Signed:</b>	<b>Date:</b> /    /
----------------	---------------------

I agree to my name being included in a membership list circulated for members' private use: **Yes** ☐ **No** ☐

**Payment by:** (1) Bank Transfer to BSB 633-000 Account No. 159982271 (Bendigo Bank)

Please include your surname and post code as reference/transaction details

Or (2) Cheque made payable to: APS MITCHELL INC.

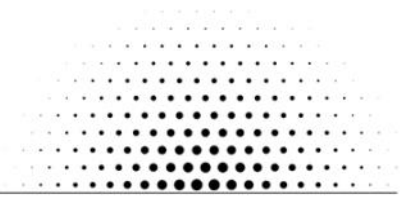
Posted to: APS Mitchell Treasurer, P O Box 541, Kilmore Vic 3764

Or (3) Pay via cash or cheque at an APS Mitchell monthly meeting (usually 3<sup>rd</sup> Monday of the month 7:30pm John Taylor Room, Kilmore Library, Sydney St Kilmore. See website for details)



## MITCHELL SHIRE COUNCIL.

### COVID-19 Community Facility Safe Plan



## COVID Safe Plan For APS Mitchell Group Inc. Organisation

### PURPOSE

Mitchell Shire Council requires a COVID-19 Safe plan for groups and organisations who wish to return using Council owned or managed facilities. The following plan supports a safe approach for building use. Council welcomes the inclusion of any special guidance from your peak bodies and associations where this has been provided.

### SCOPE

This plan applies to all people entering the **KILMORE LIBRARY JOHN TAYLOR ROOM** building located at **12 SYDNEY STREET KILMORE** in line with the easing of COVID-19 restrictions identified by the Department of Health and Humans Services.

### PLAN

#### 3.1 Pre-Return Risk Assessment

Prior to people attending the site a Risk Checklist must be completed identifying how the requirements for physical distancing and people density will be maintained. A checklist to enact the plan is attached in Appendix 1

#### 3.2 Considering groups needs

**Organisers will discuss potential vulnerabilities with all group members and encourage individual participants to consider their own risk and need to attend.** The group may need to consider supporting different members depending on their circumstances. Circumstances may have changed post COVID-19, for example they may now have additional carer's responsibility or family members with specific health risks.

Social and physical vulnerabilities that might affect a person attending the facility include:

- Immune-compromised: may limit attendance or may require additional controls
- Social isolation: managing return to social settings may not be easy for some people
- Need to assist family with child minding or other activities

Our plan for managing our members is:

- Sending Covid-19 safe plan to all members with the meeting groups notice
- A copy of the Covid-19 Safe plan with the meeting registration book
- Limit numbers to current DHS prescribed restriction number's
- Update all members as circumstances change

Any person who is unwell should not enter the building. This includes presenting with cold or flu symptoms including fever, runny nose, coughing, sore throat, aches or diarrhea. People with symptoms will be asked to leave.

This plan has been communicated to all affected members of the group.

# MITCHELL SHIRE COUNCIL.

## COVID-19 Community Facility Safe Plan



(Continued from page 13)

### 3.3 Return to facilities

#### 3.3.1 Physical distancing measures

Physical distancing measures mean that people from separate households must be more than 1.5 metres from each other. In addition, a minimum space of 2 metres x 2 metres is required for every person in any room they access.

Spaces (e.g. corridors) where there is a potential for people to come in contact with each other may exist in the building. It is acceptable that people walk past each other in these spaces as the amount of time they are together is minimal. However, they are not to stop in these spaces and, if possible, the movement of members should be managed so that people will not physically brush past each other in this space.

Rooms in the building and the maximum number of people allowed (subject to current restriction limits on total numbers):

Room Name	Size (width X depth)	Max people (width x depth/2)
John Taylor Room		Max 40 people

Signs will be placed into any room where the maximum occupancy is less than the maximum allowed into the entire facility to advise that people are to wait until the room is vacated.

### Cleanliness

*Cleaning arrangements for the building are to be documented.*

On entry to the building it is advised that every person wash their hands with soap and water or carries hand sanitiser to apply at entry. Everyone should avoid touching their faces.

For this building, at the end of every session any equipment and all tables and chairs used by the members need to be cleaned by the meeting organiser using soap and water with washable or disposable cloths. Spray and wipe is also satisfactory for cleaning.

Chairs with soft covers will, where possible, not be used as these are difficult to wipe down.

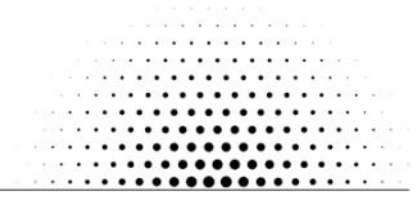
Council clean as per schedule arranged with the Contracts Management Coordinator at Mitchell Shire Council. This has been communicated to each building manager.

(Continued on page 15)



## *Covid Safe Meeting Plan...*

### **MITCHELL SHIRE COUNCIL.** *COVID-19 Community Facility Safe Plan*



*(Continued from page 14)*

#### **COVID-19 Infection**

If a member is diagnosed with COVID-19, the following process will apply:

- Notify members who may have had contact with the person per DHHS guidance
- Ensure the privacy of the individual is maintained
- Seek assistance from Council contact
- Inform Council to arrange a deep clean of the building

#### **3.6 Breach of the policy**

Everyone will be treated with respect and it is expected that members will adhere to guidelines to physical distancing to help minimise the risk of COVID-19 being spread. Should someone test positive who attended a meeting space their privacy will be maintained, however Council will need to support a contact tracing regime to inform others.

#### **3.7 Legal Sources of policy**

- [National COVID-19 Safe Workplace Principles](#)
- [NCCC COVIDSafe plan](#)
- *Occupational Health and Safety Act 2004 (VIC)*
- *Occupational Health and Safety Regulation 2017 (VIC)*
- *Disability Discrimination Act 1992 (Cth)*
- *Equal Opportunity Act 2010 (VIC)*

Appendix 1 – Checklist (to be completed for each session and retained by user group)

#### **Before activity**

- ☐ Date and time of activity \_\_\_\_\_
- ☐ Activity type \_\_\_\_\_
- ☐ Rooms used (e.g. hall and kitchen) \_\_\_\_\_
- ☐ Responsible person name (must be present throughout activity)

#### **The following available:**

- ☐ Advice on COVID-19 available to everyone –  
e.g. [www.dhhs.vic.gov.au/staying-safe-covid-19](http://www.dhhs.vic.gov.au/staying-safe-covid-19)
- ☐ Specific vulnerabilities determined and vulnerable group members encouraged to participate in other ways or to make arrangements with organisers for any special requirements to facilitate attendance
- ☐ Room sizes and number of people in each room signed

*(Continued on page 16)*

## *Covid Safe Meeting Plan...*

### **MITCHELL SHIRE COUNCIL.**

#### *COVID-19 Community Facility Safe Plan*



*(Continued from page 15)*

- ☐ Places where it will be difficult to maintain 1.5m spacing identified
- ☐ Signs for 1.5m and COVID-19 displayed
- ☐ Attendance sheet available and completed by all people entering facility
- ☐ Consideration for leaving doors open to allow access through doors without touching
- ☐ Advised patrons to hand wash/ hand sanitise as soon as they enter the building (consider leaving the outer toilet door propped open to avoid touching)
- ☐ Soap and water or disinfectant spray and disposable cloth (e.g. paper towel) available to clean surfaces touched
- ☐ Gloves available

Other risks to be managed (please list, use reverse of sheet if more space required)

#### **During activity**

- ☐ Encourage participants not to bring belongings into centre (less to contaminate and clean)
- ☐ All attendees have been asked if they are unwell or have a temperature
- ☐ All attendees have been asked to wash their hands upon entry
- ☐ All attendees have provided their contact information on attendance sheet
- ☐ All attendees have been informed about safe distancing (1.5m)
- ☐ All attendee have been advised of other risks to be managed (please see list, use reverse of sheet if more space required)

#### **After activity**

- ☐ All items used (including tables and chairs) washed with soap and water or sprayed and wiped with a disinfectant. This is the responsibility of the meeting organiser
- ☐ This form and the attendance sheet completed and stored in a centralised location (e.g. office) – to be made available upon request

#### **Plan completed by:**

<b>Name</b>	<b>Ian Julian</b>
<b>Role</b>	<b>Secretary APS Mitchell Group Inc.</b>
<b>Contact Number</b>	<b>0438 270 248</b>
<b>Email</b>	<b>apsmitchell@gmail.com</b>
<b>Date</b>	<b>28-01-2021</b>
<b>Signature</b>	<i>Ian Julian</i>